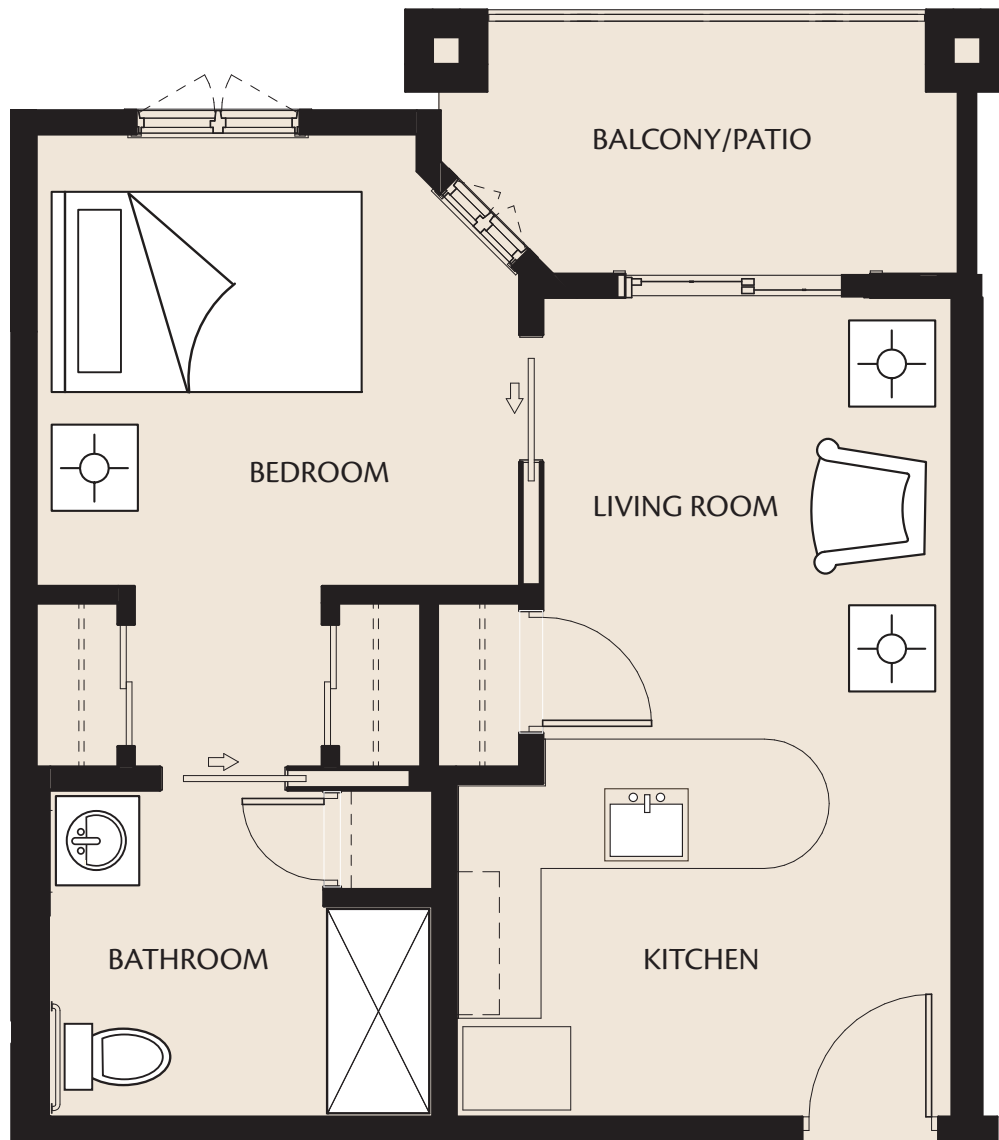




The Chatham

ASSISTED LIVING – 1 BEDROOM (Balcony/Patio)



513 Sq. Ft.

\$



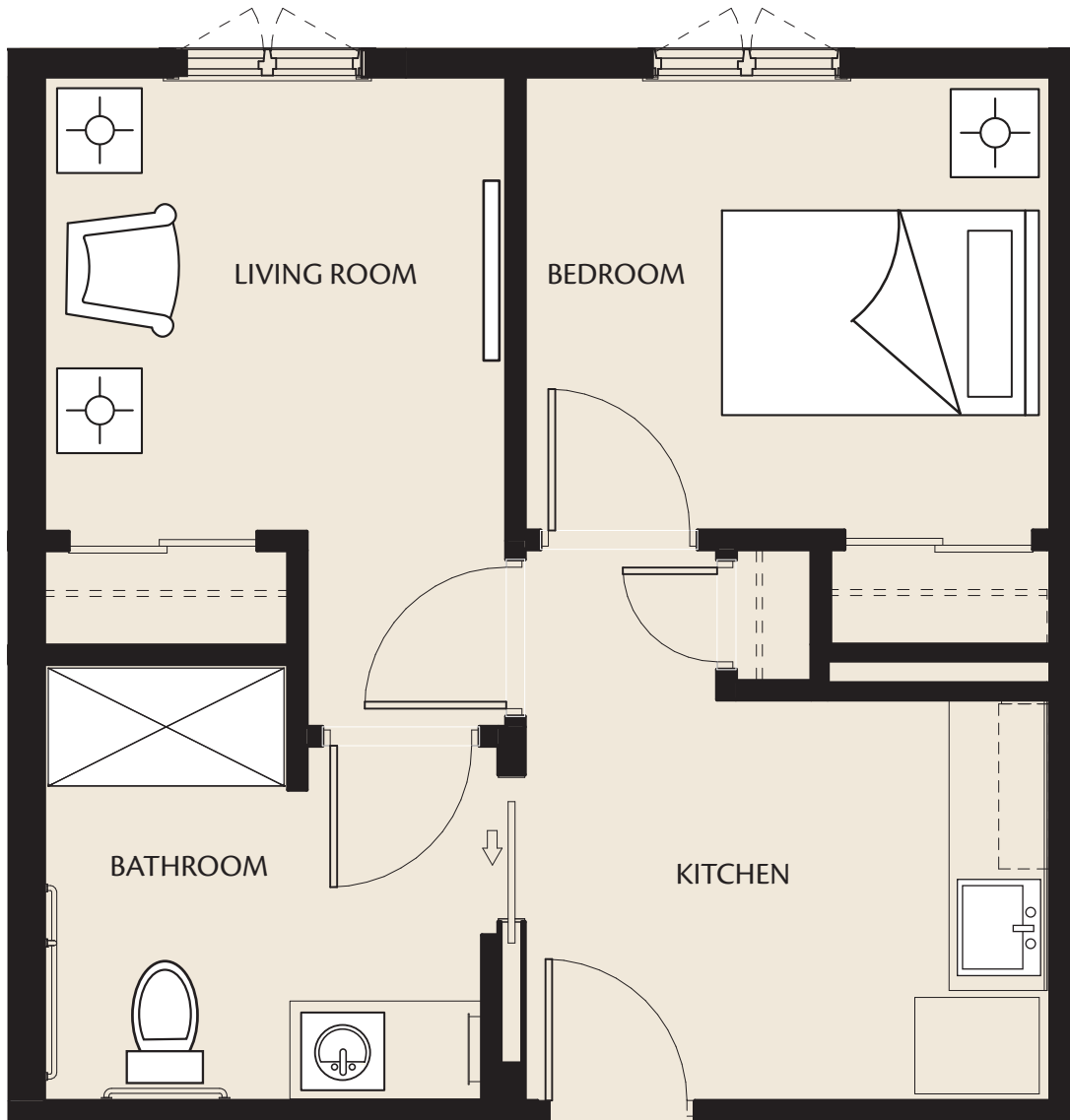
HarborChase
Assisted Living • Memory Care

Wilmington



The Devon

ASSISTED LIVING – 1 BEDROOM



484 Sq. Ft.

\$ _____



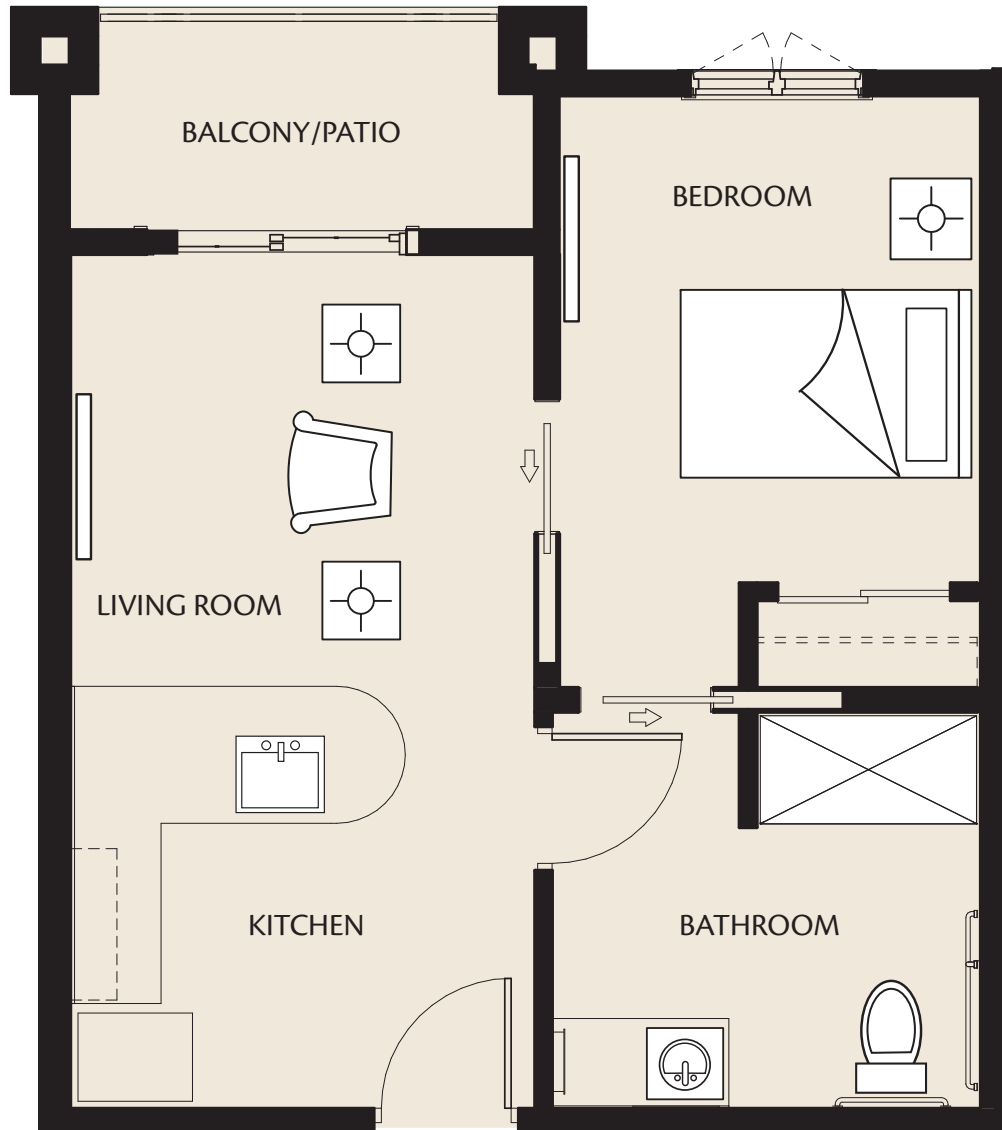
HarborChase
Assisted Living • Memory Care

Wilmington



The Chalfonte

ASSISTED LIVING – 1 BEDROOM (Balcony/Patio)



473 Sq. Ft.

\$ _____



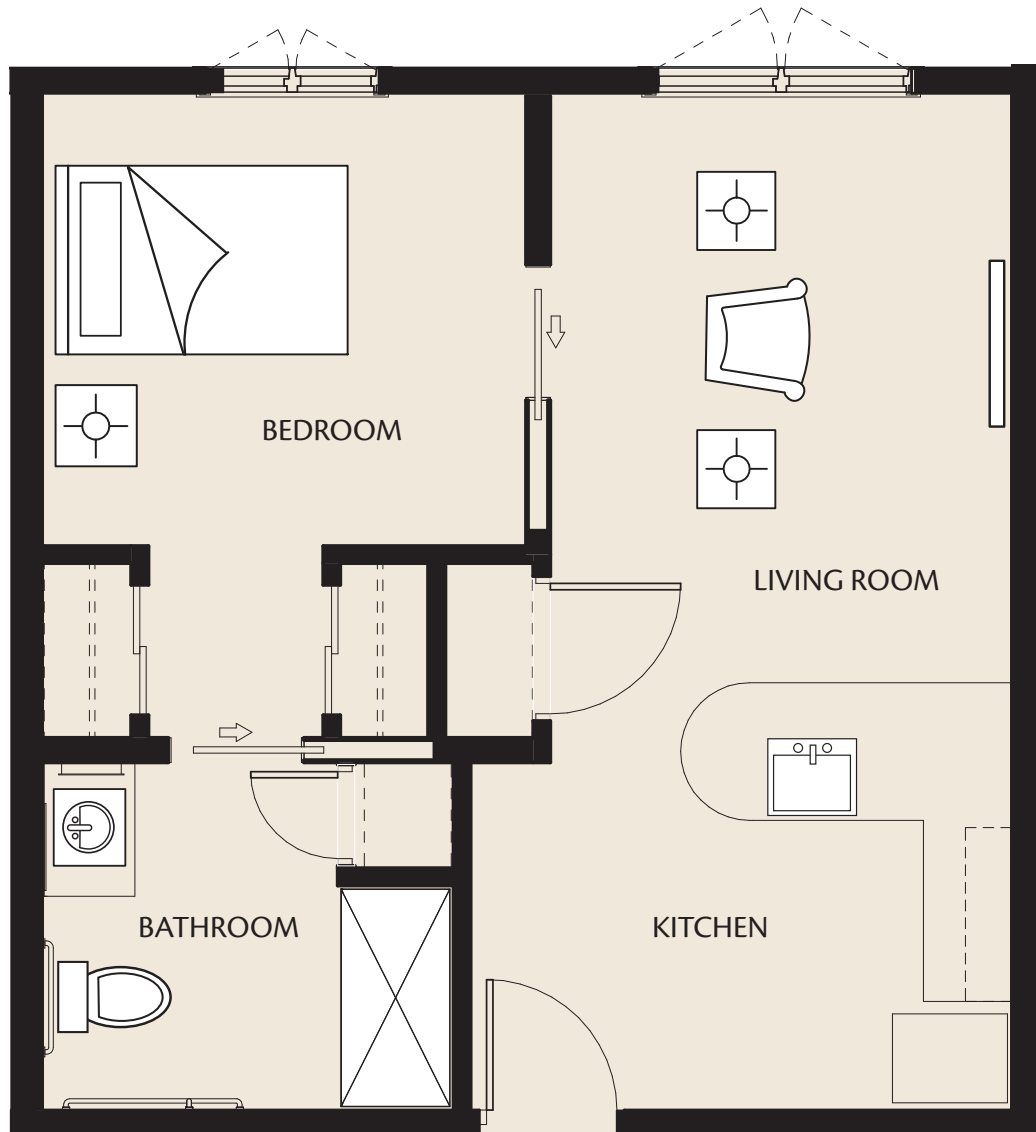
HarborChase
Assisted Living • Memory Care

Wilmington



The Longwood

ASSISTED LIVING – 1 BEDROOM



545 Sq. Ft.

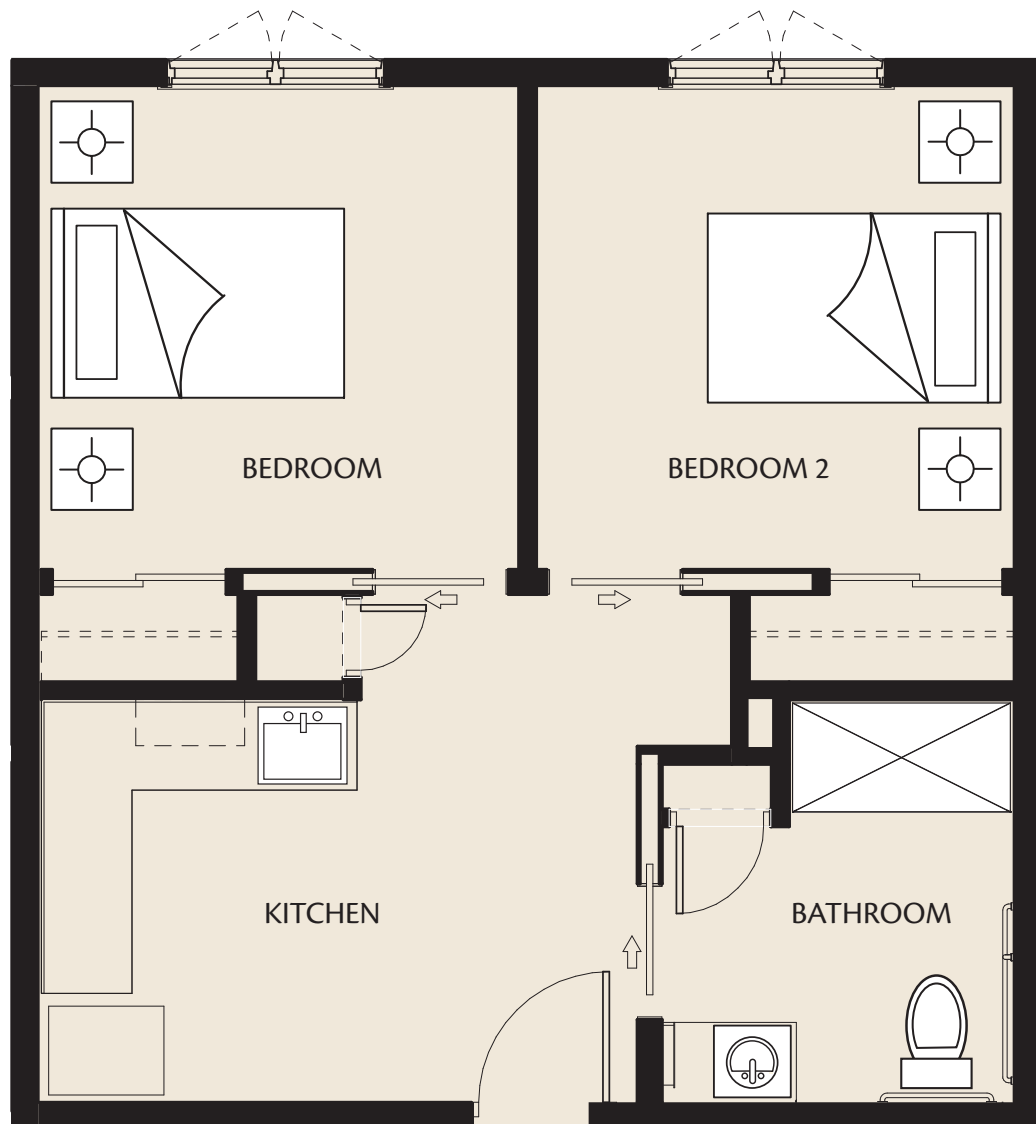
\$ _____





The Augustine

ASSISTED LIVING – 2 BEDROOM



545 Sq. Ft.

\$



HarborChase
Assisted Living • Memory Care

Wilmington



The Montchanin

ASSISTED LIVING – 1 BEDROOM



504 Sq. Ft.

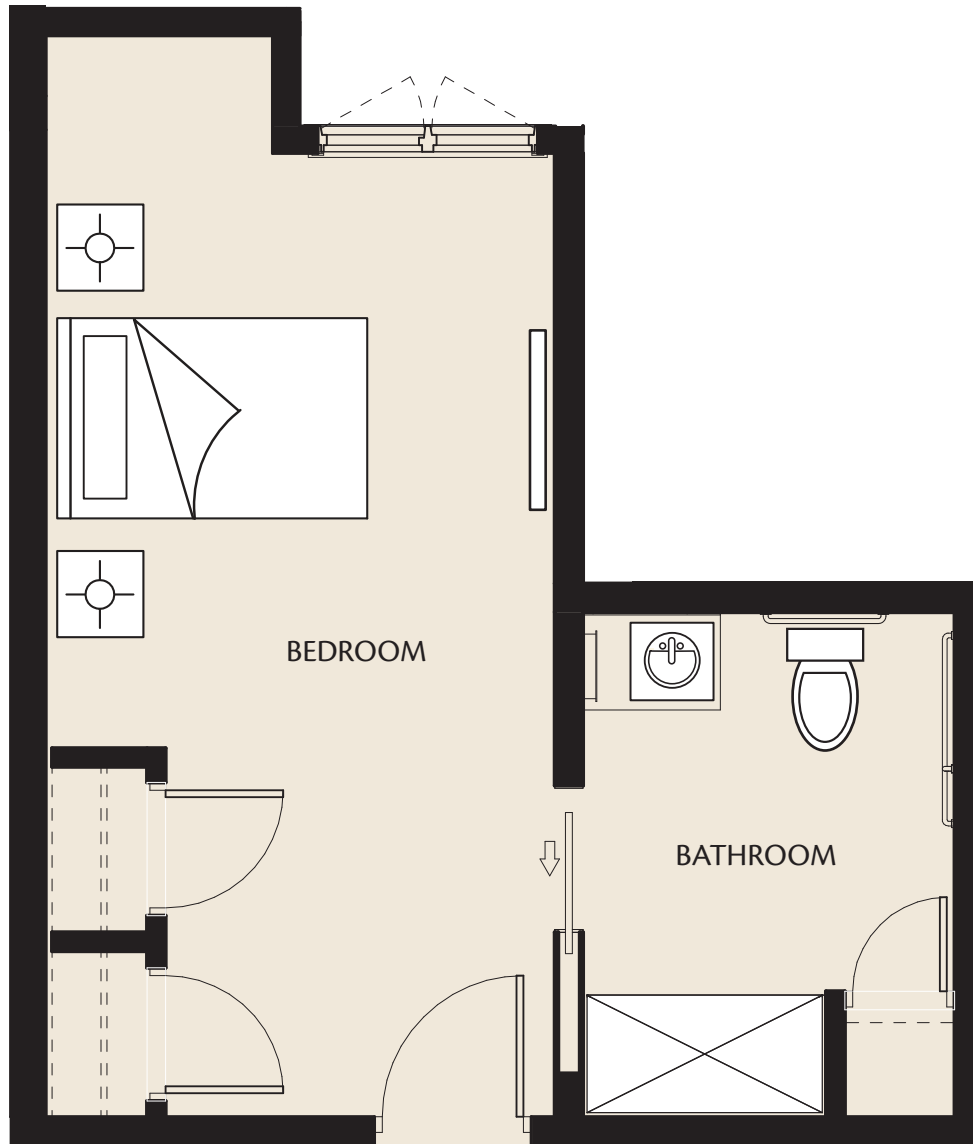
\$





The Shipley

MEMORY CARE – PRIVATE (24)



348 Sq. Ft.

\$ _____



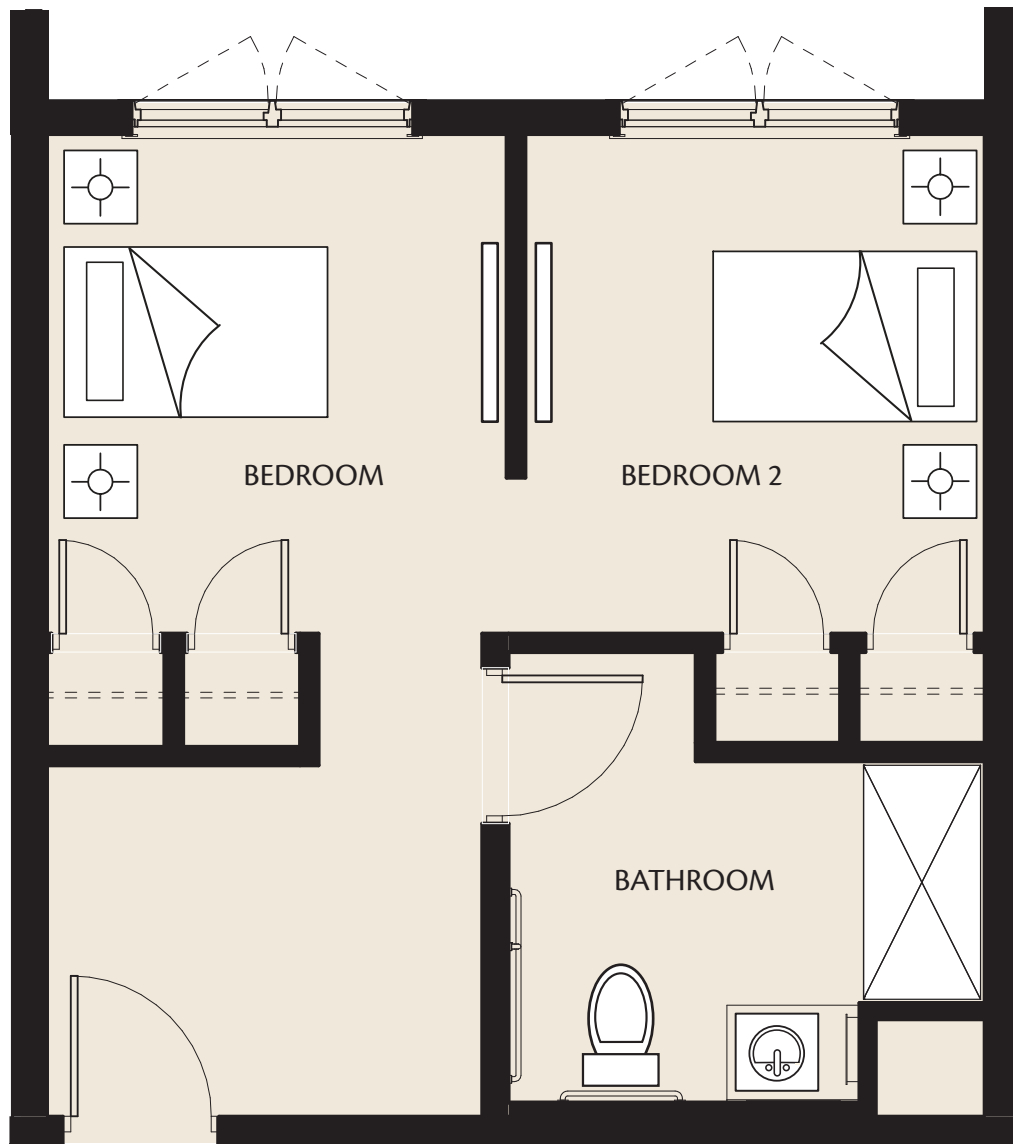
HarborChase
Assisted Living • Memory Care

Wilmington



The Christiana

MEMORY CARE – SEMI-PRIVATE (8)



442 Sq. Ft.

\$



HarborChase
Assisted Living • Memory Care

Wilmington