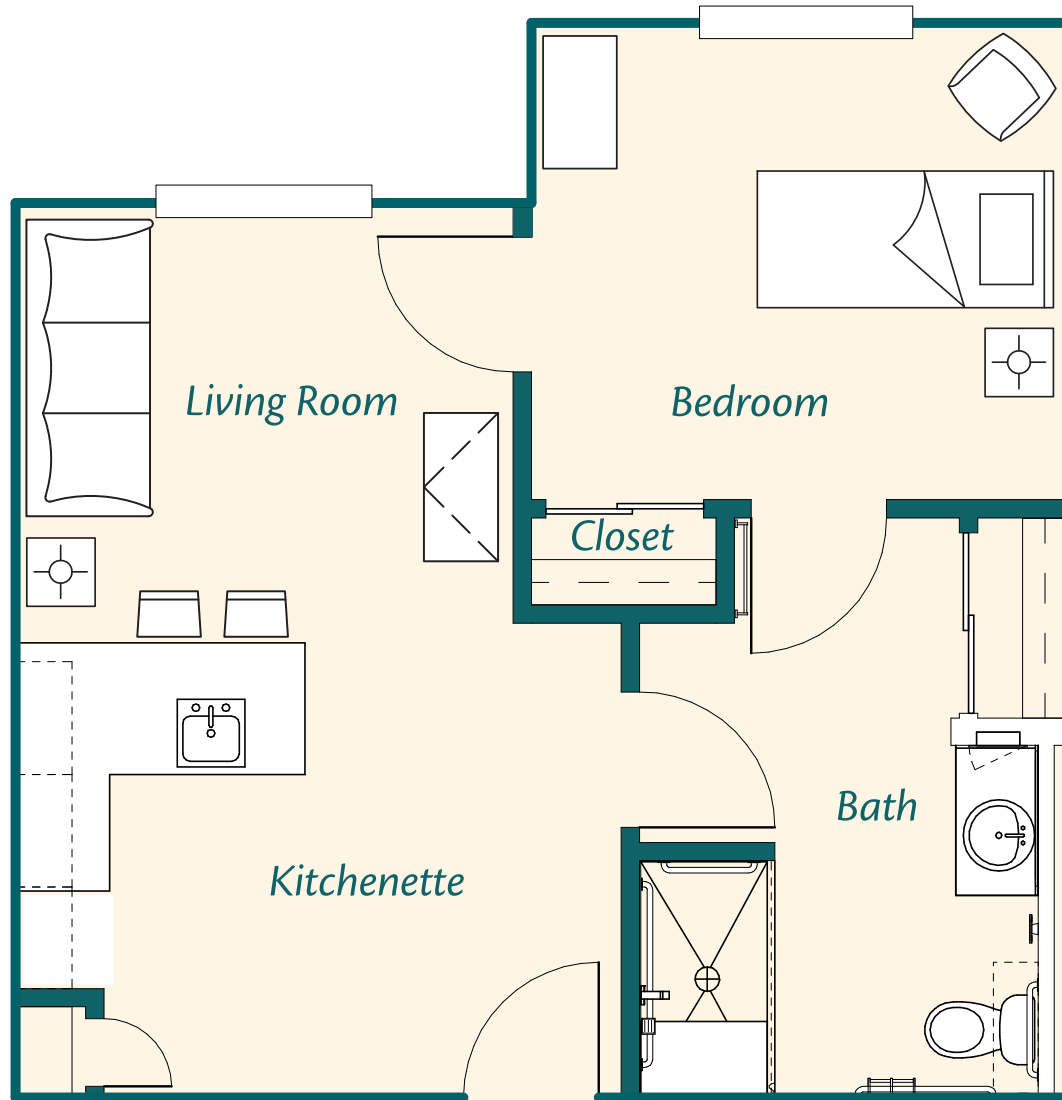


Heritage

Assisted Living Unit – One Bedroom



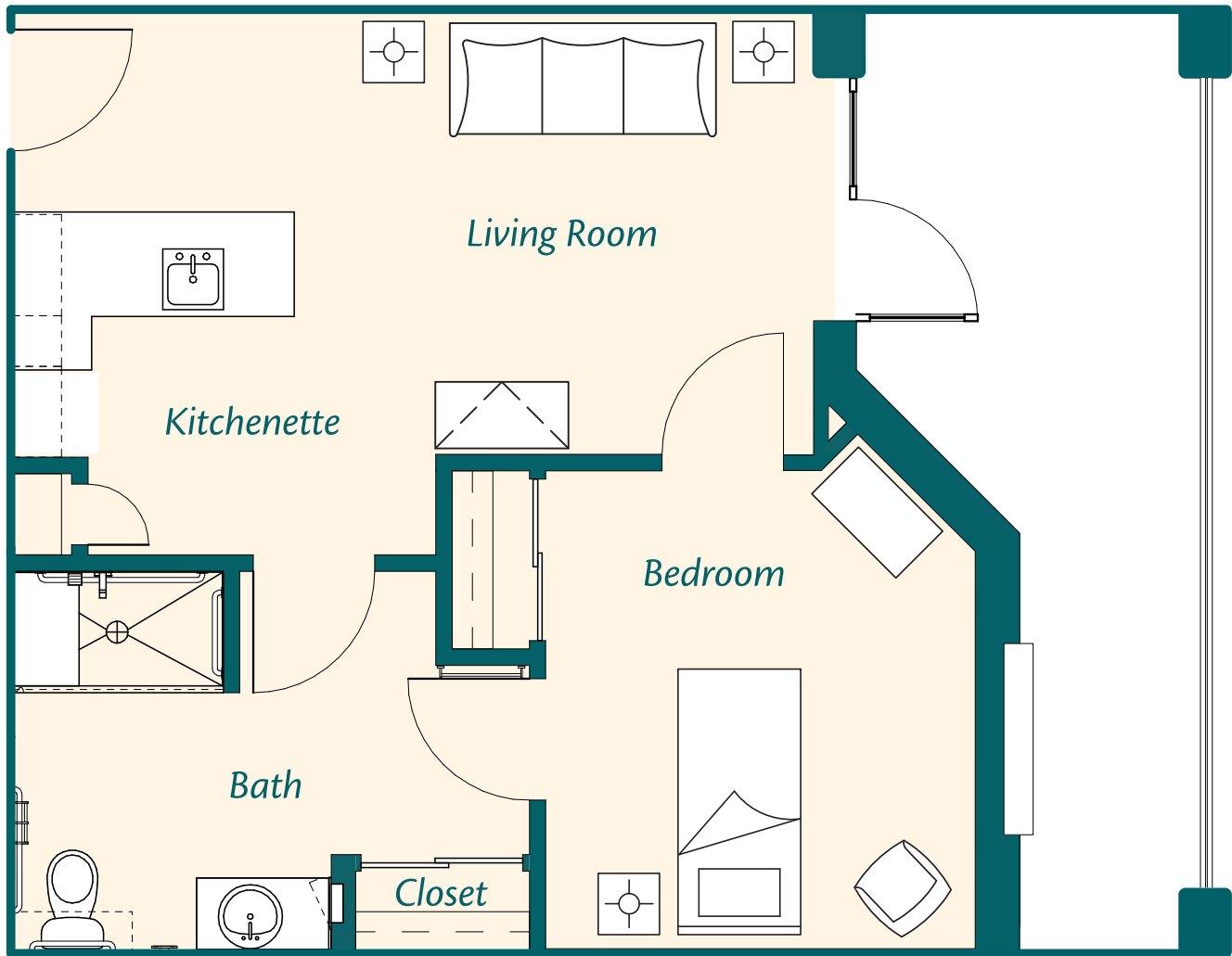
510-599 S.F. (AL-A1)

\$



Lavon

Assisted Living Unit – One Bedroom



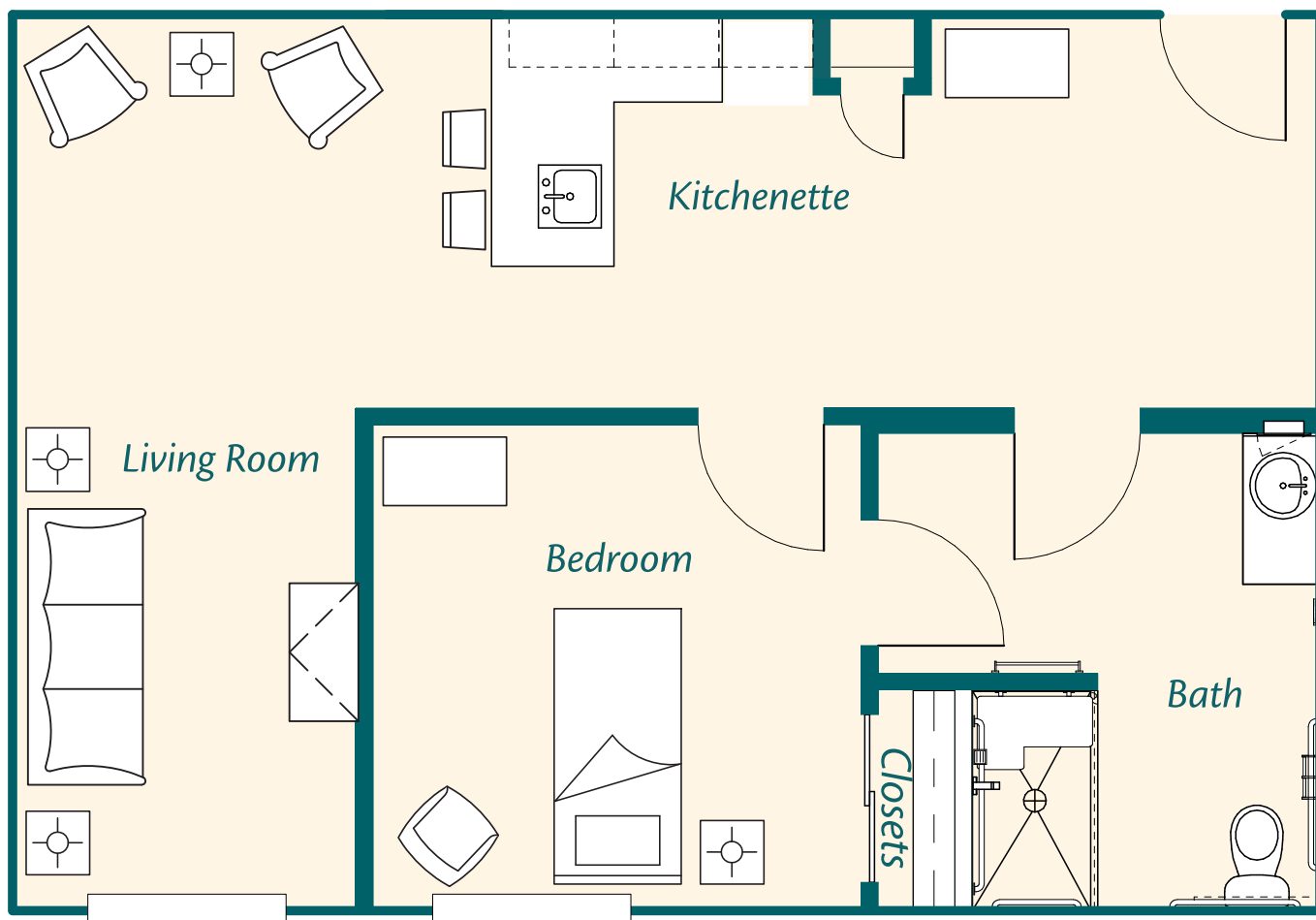
510 S.F. (AL-A2)

\$



Fairview

Assisted Living Unit – One Bedroom



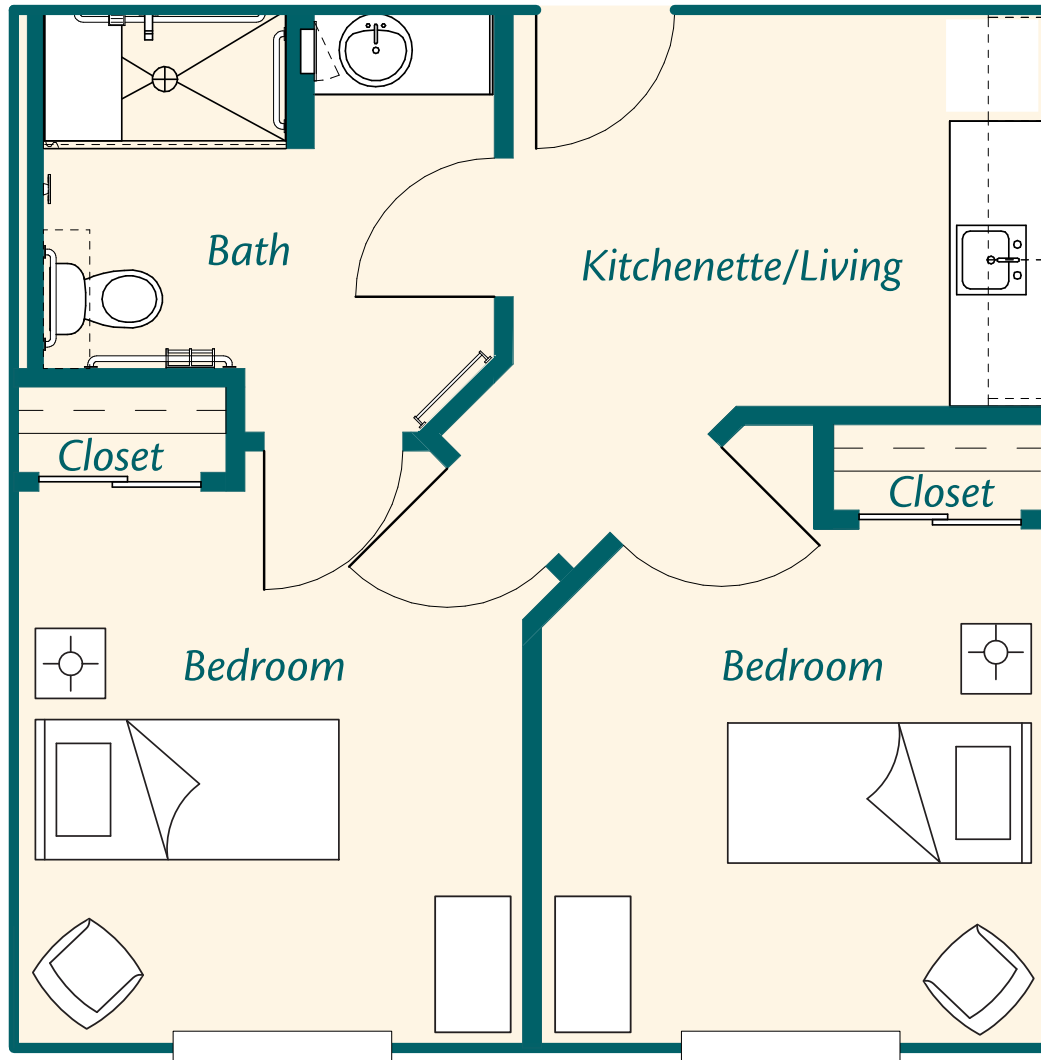
666 S.F. (AL-A3)

\$



Harrington

Assisted Living Unit – Two Bedroom



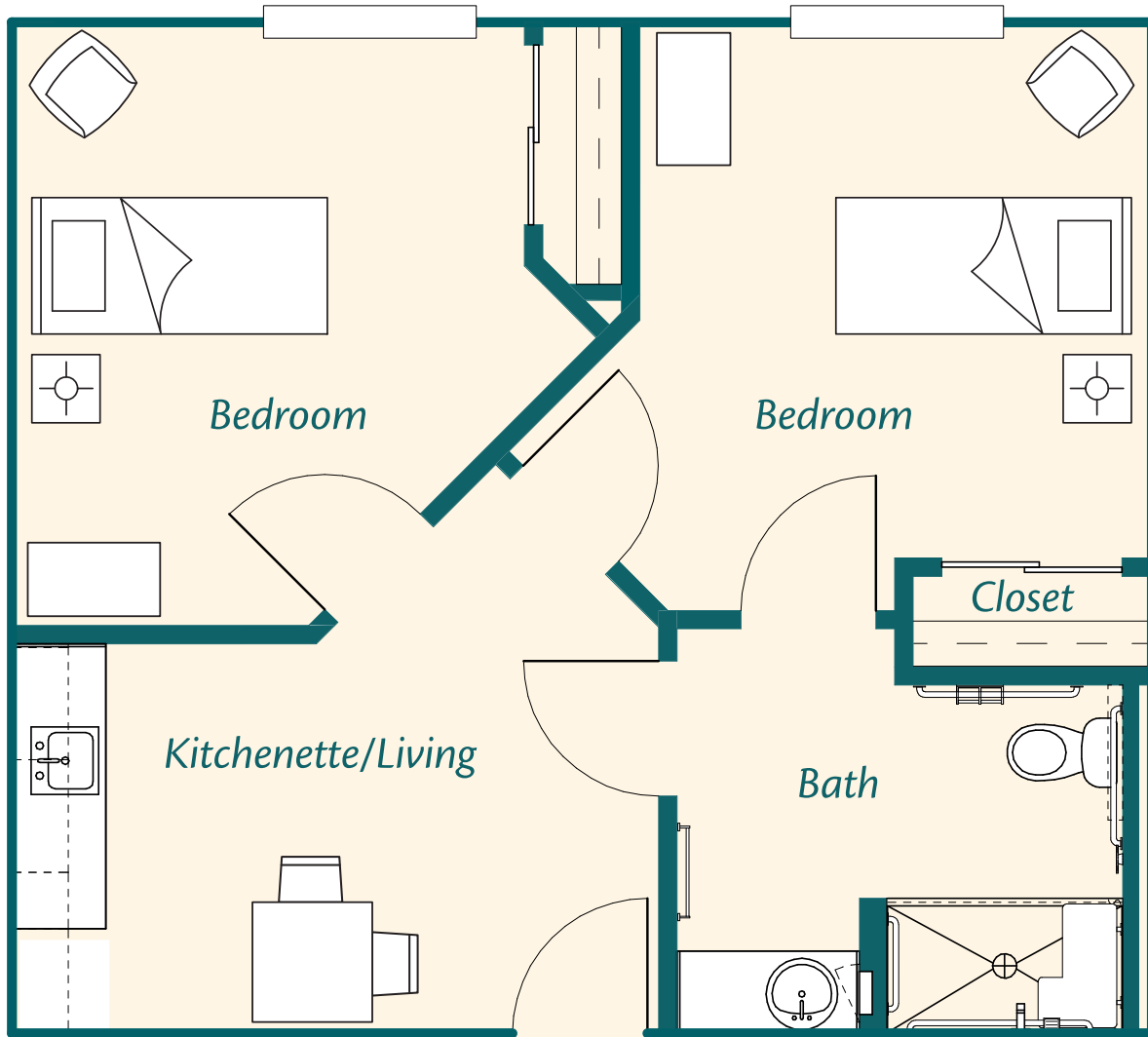
499-502 S.F. (AL-B1)

\$



Arbor Hills

Assisted Living Unit – Two Bedroom



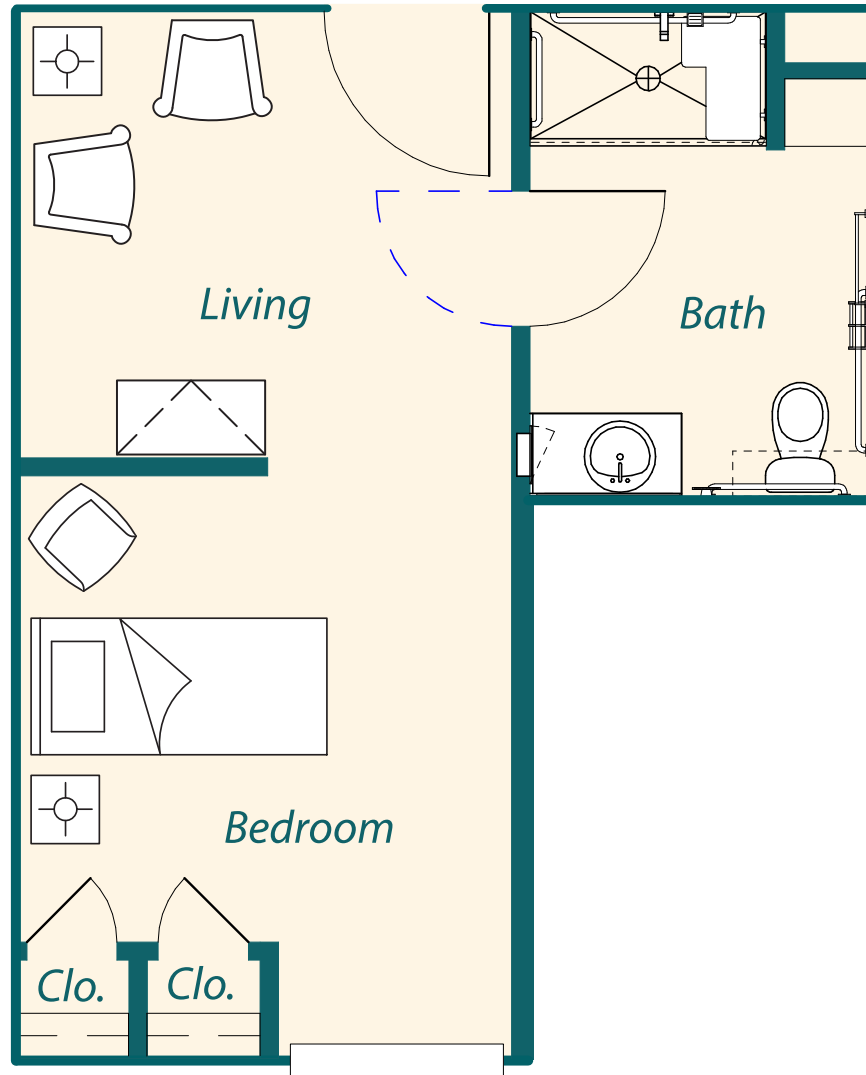
569 S.F. (AL-B2)

\$



Oak Point

Memory Care Unit – One Bedroom



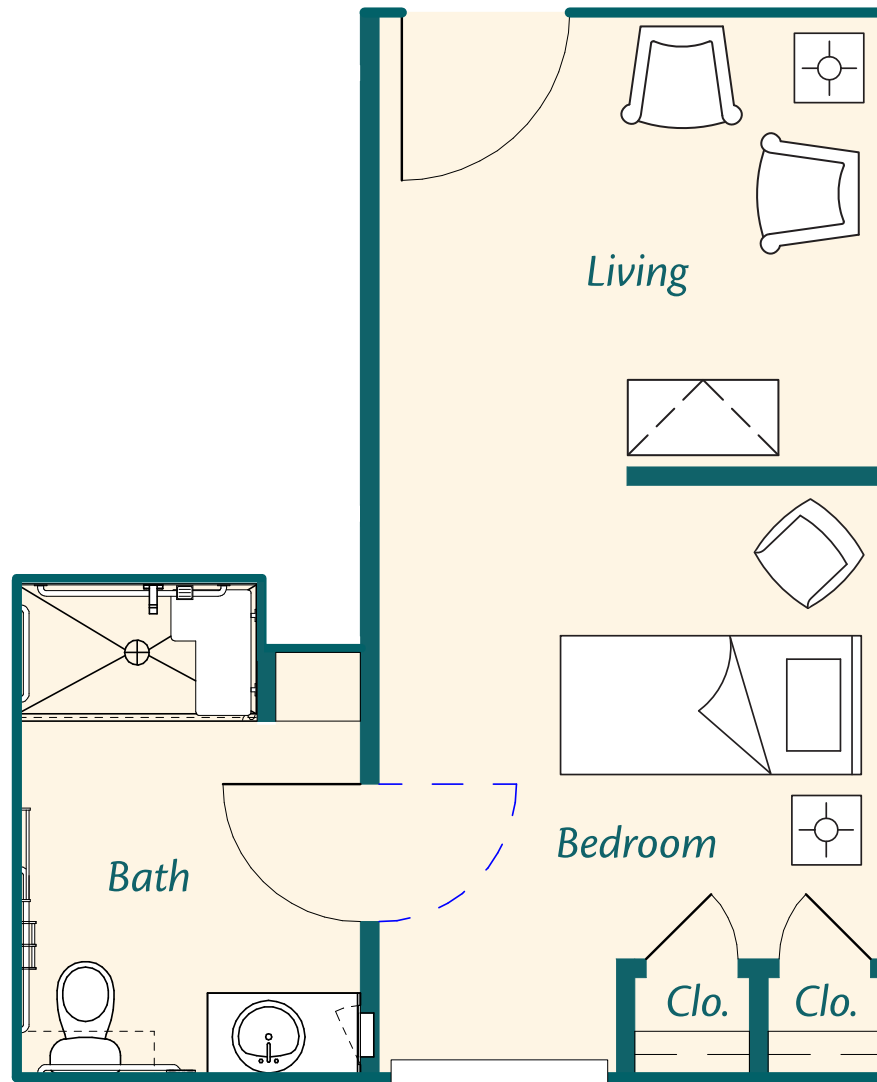
343-363 S.F. (MC-A1)

\$



Watters Creek

Memory Care Unit – One Bedroom



356-363 S.F. (MC-A2)

\$



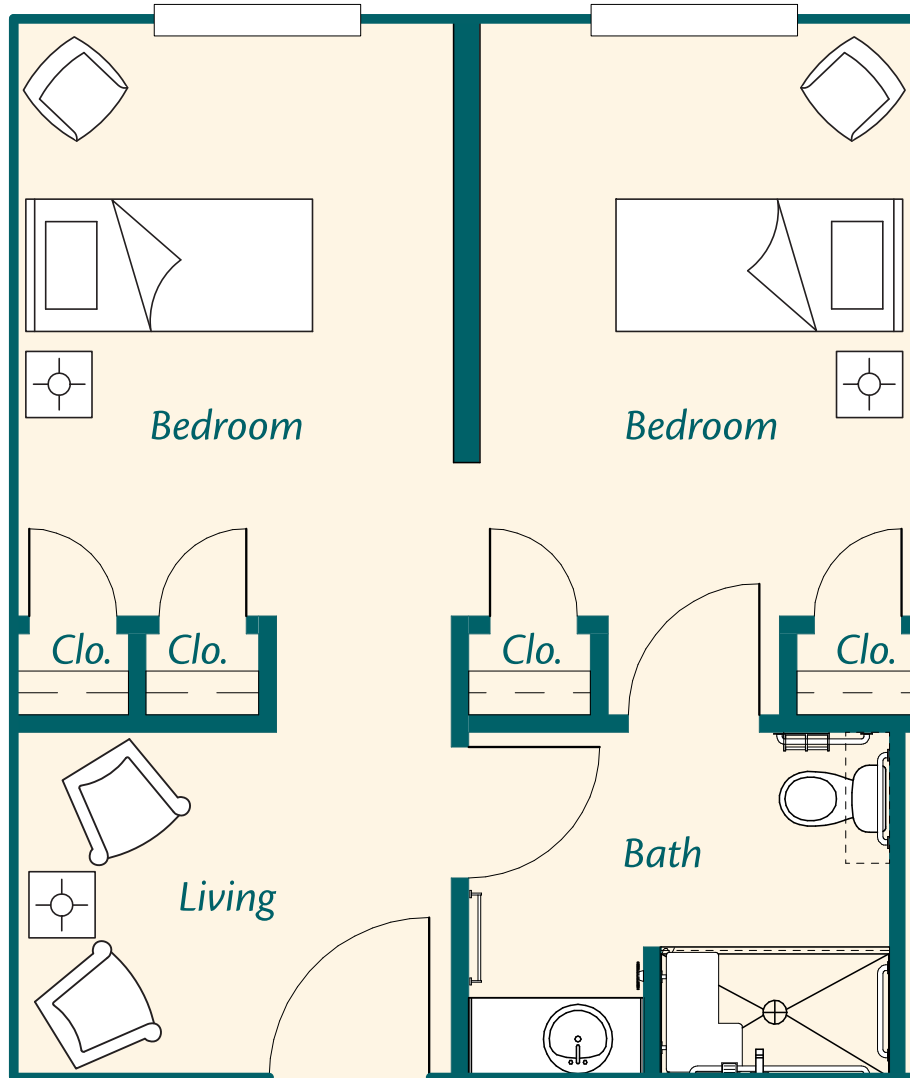
5340 Towne Square Drive, Plano, TX 75024 | Phone: (972) 362-1110 | Fax: (972) 362-1109

www.HarborChase.com



Los Rios

Memory Care Unit – Two Bedroom



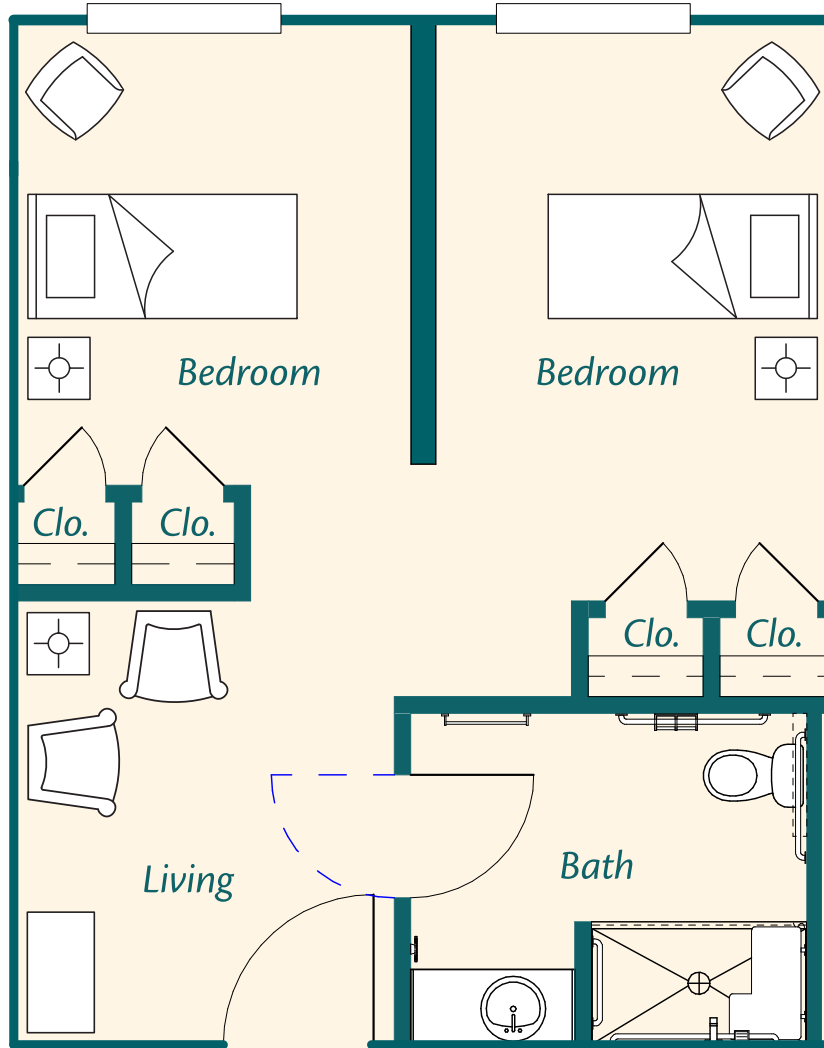
476-517 S.F. (MC-B1)

\$



Windhaven

Memory Care Unit – Two Bedroom



500 S.F. (MC-B2)

\$



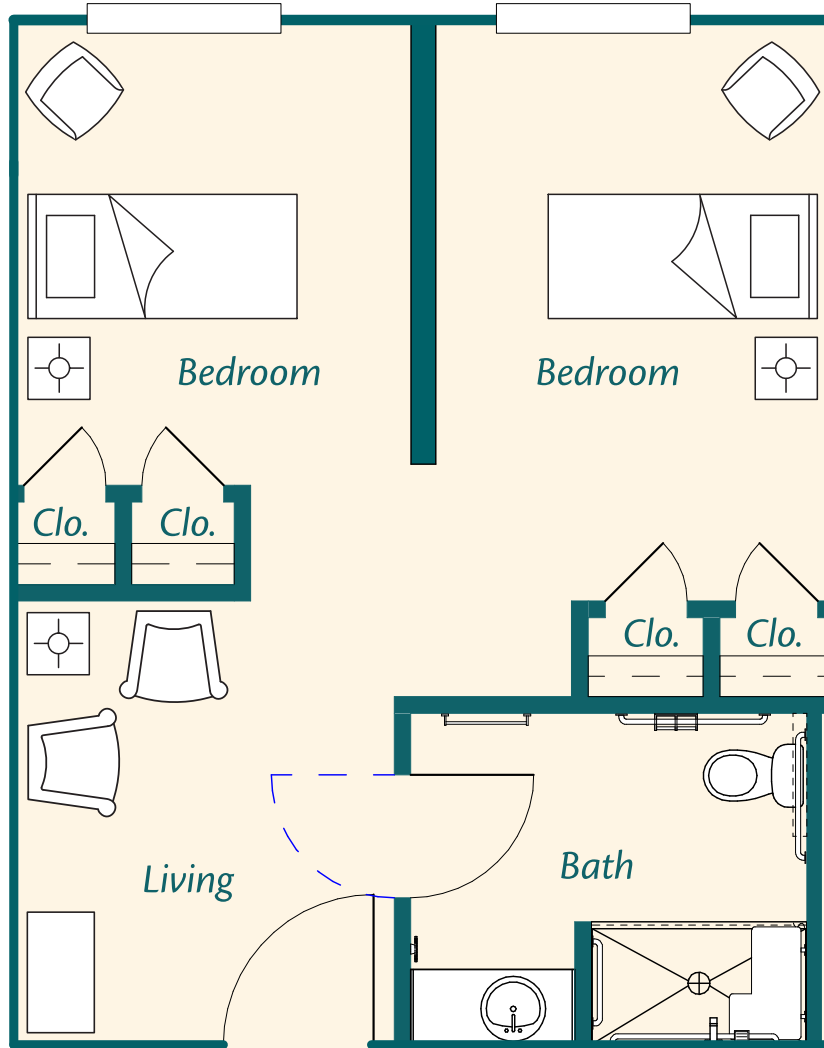
5340 Towne Square Drive, Plano, TX 75024 | Phone: (972) 362-1110 | Fax: (972) 362-1109

www.HarborChase.com



Prestonwood

Memory Care Unit – Two Bedroom



517 S.F. (MC-B3)

\$



5340 Towne Square Drive, Plano, TX 75024 | Phone: (972) 362-1110 | Fax: (972) 362-1109

www.HarborChase.com

