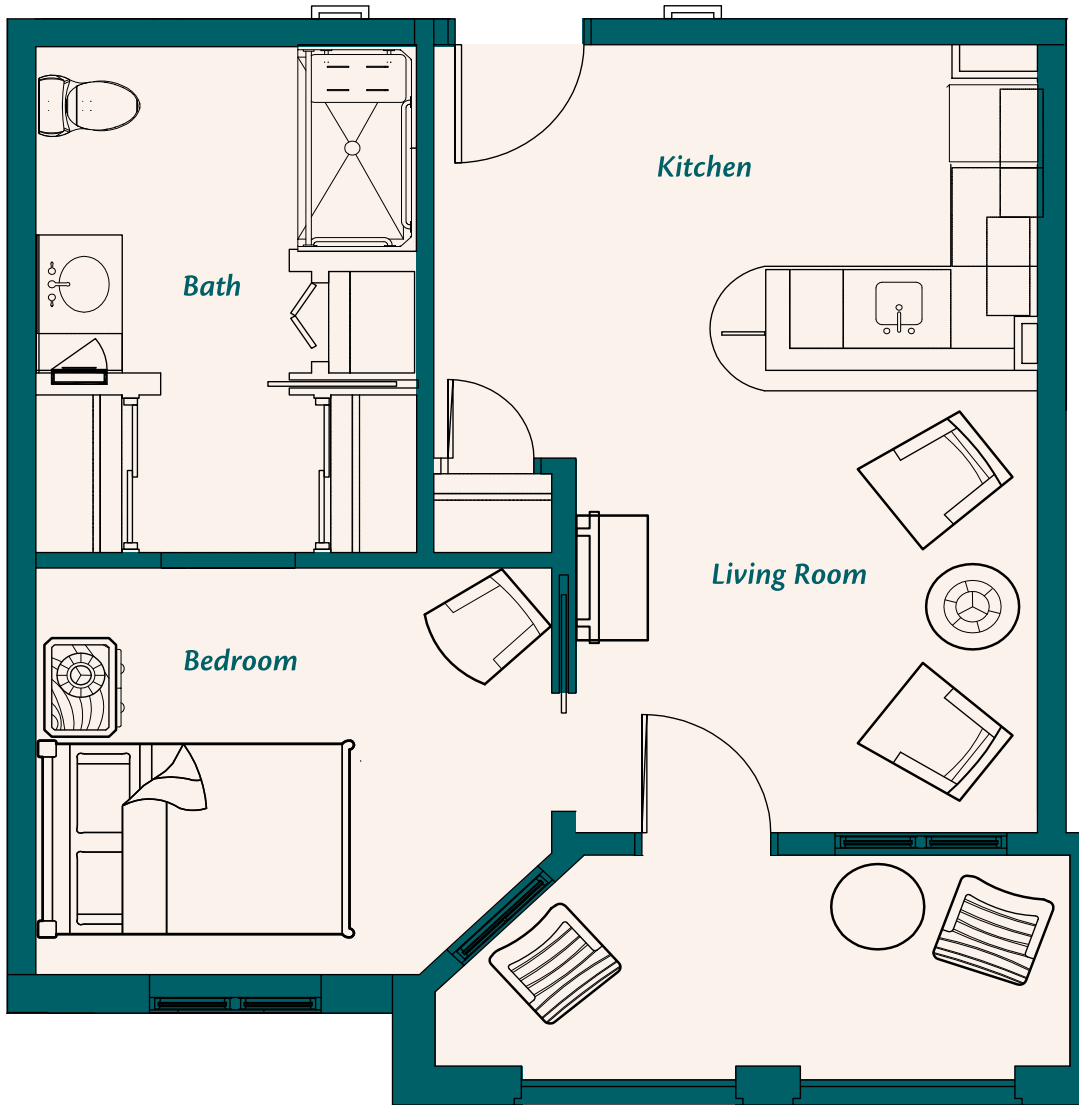


The Jackson

Assisted Living



505–586 Sq. Ft.

\$



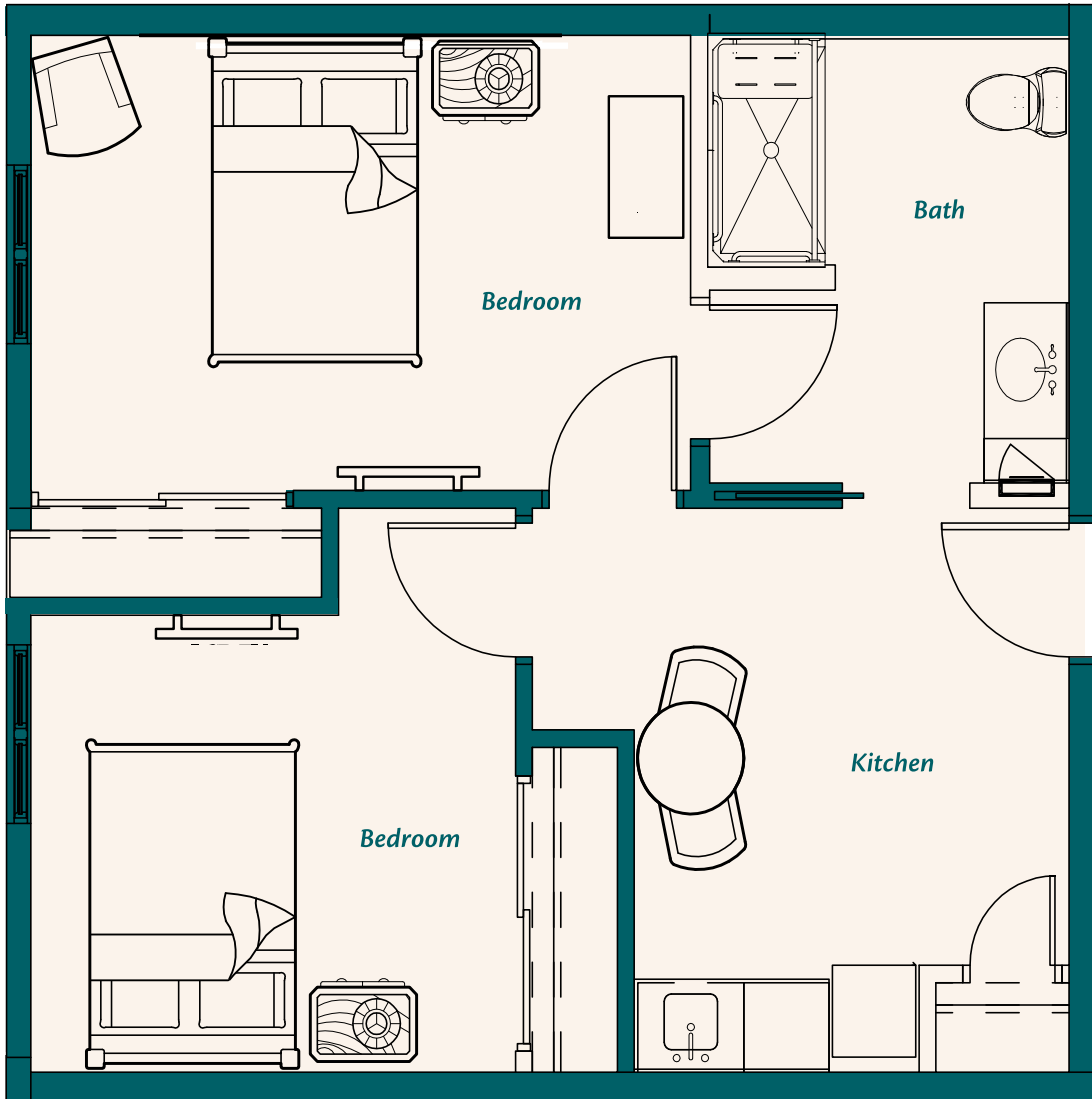
HarborChase
Assisted Living • Memory Care

1619 N. Mill Street | Naperville, IL 60563 | Phone: (630) 778-3475
www.HarborChase.com



The Washington

Assisted Living



556 Sq. Ft. (Type B-3)

\$

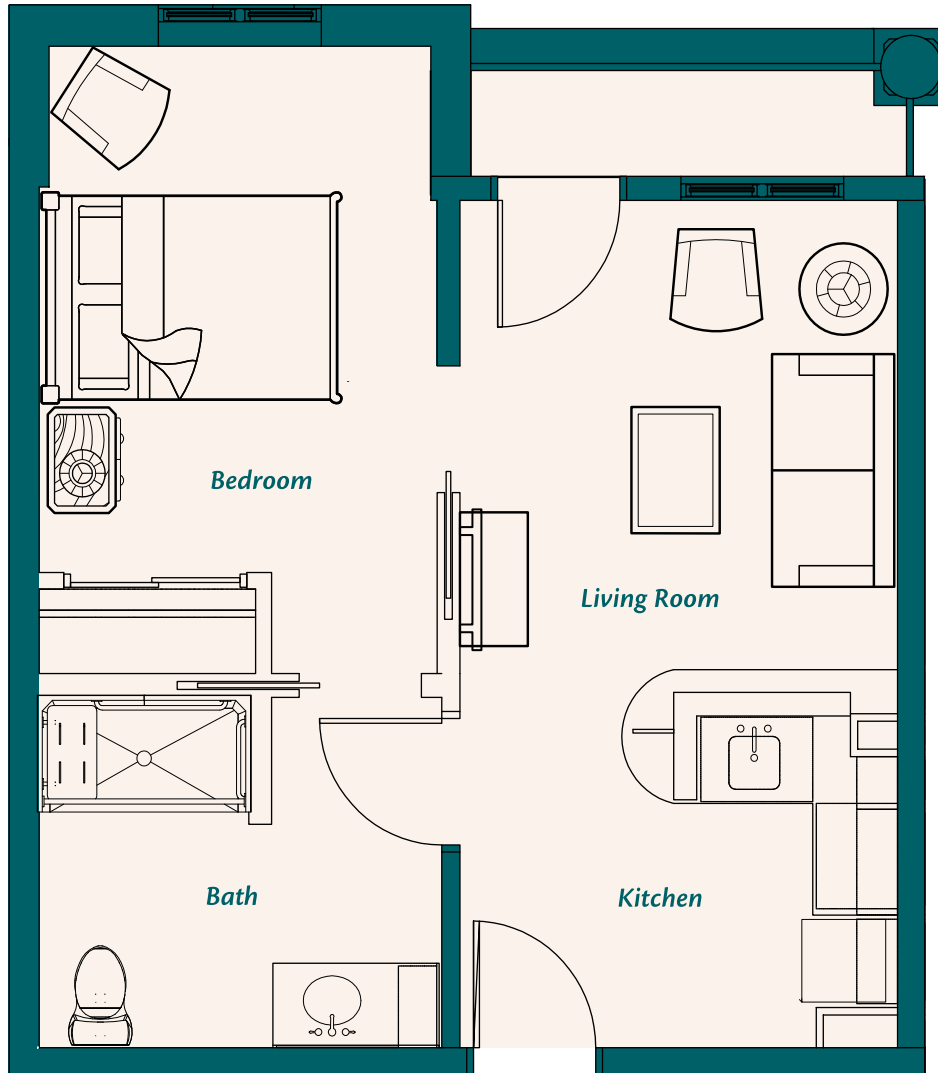

HarborChase
Assisted Living • Memory Care

1619 N. Mill Street | Naperville, IL 60563 | Phone: (630) 778-3475
www.HarborChase.com



The Franklin

Assisted Living



430–539 Sq. Ft. (Type C-1)

\$

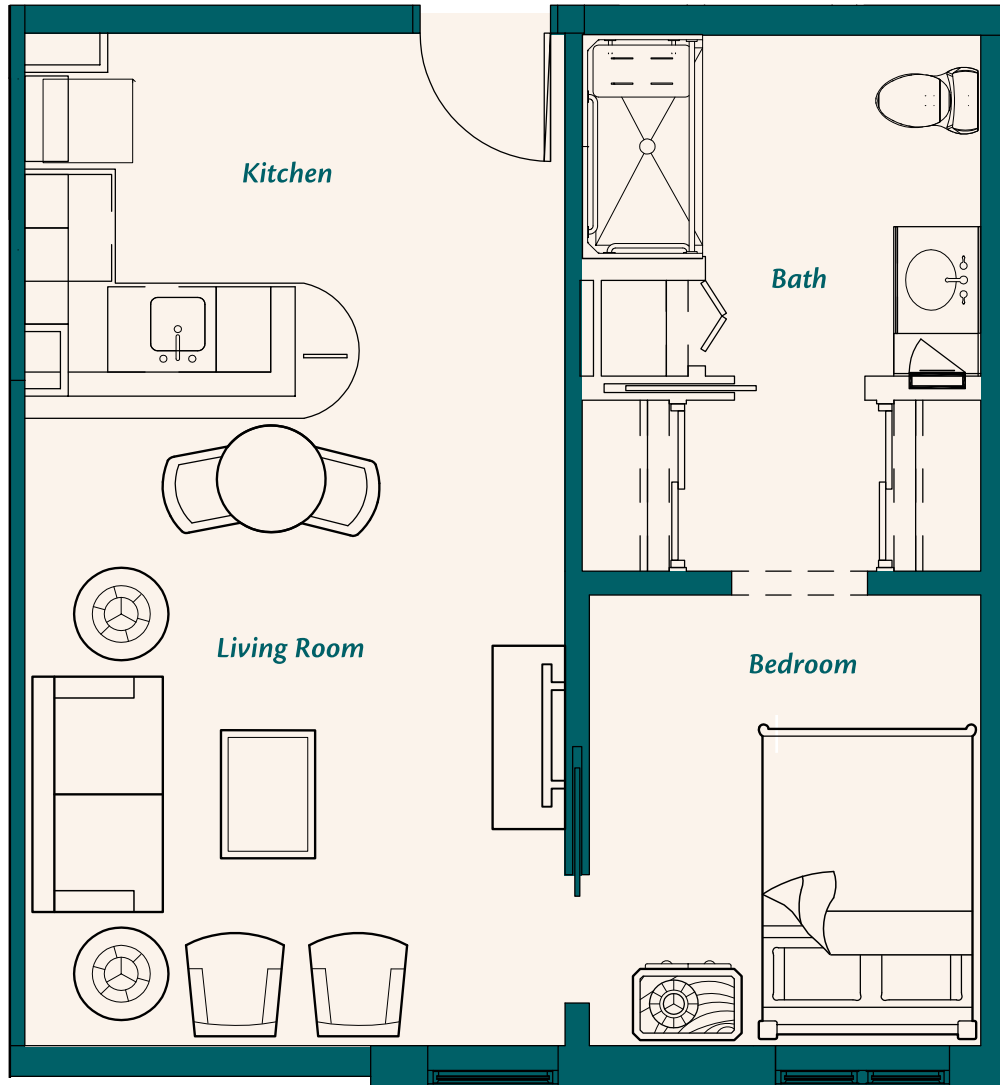

HarborChase
Assisted Living • Memory Care

1619 N. Mill Street | Naperville, IL 60563 | Phone: (630) 778-3475
www.HarborChase.com



The Savannah

Assisted Living



515 Sq. Ft. (Type C-4)

\$

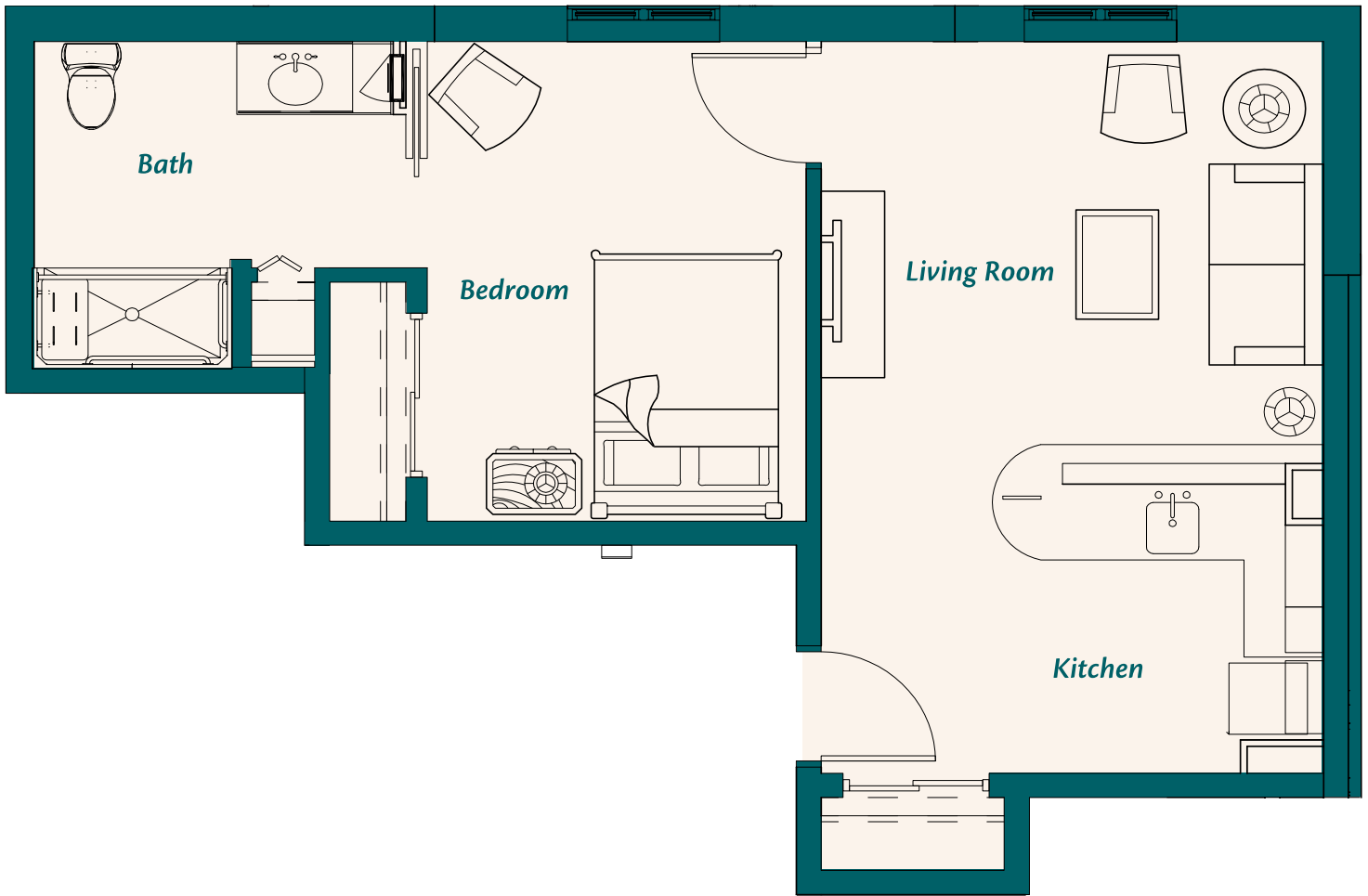


HarborChase
Assisted Living • Memory Care



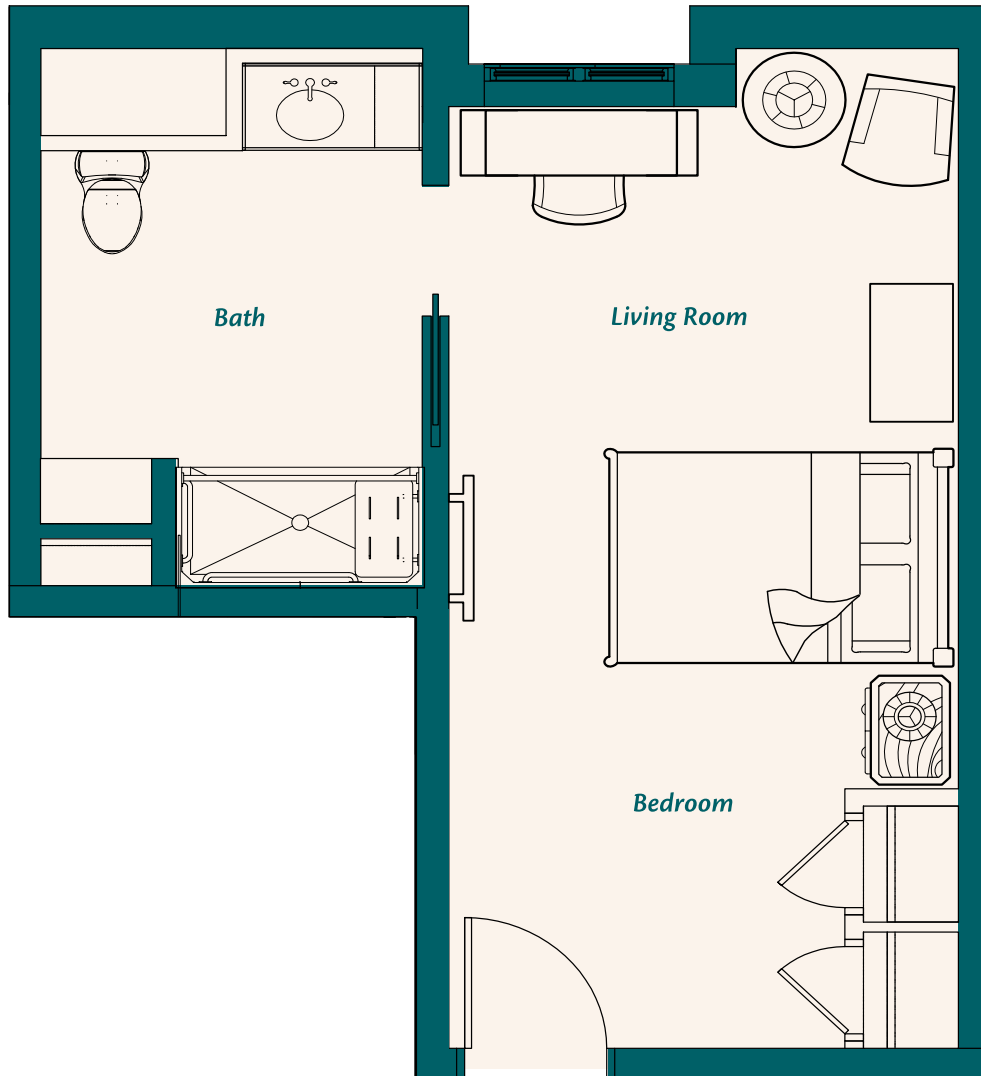
The Elderberry

Assisted Living



The Dogwood

Memory Care



278–291 Sq. Ft. (Type MC–2A)

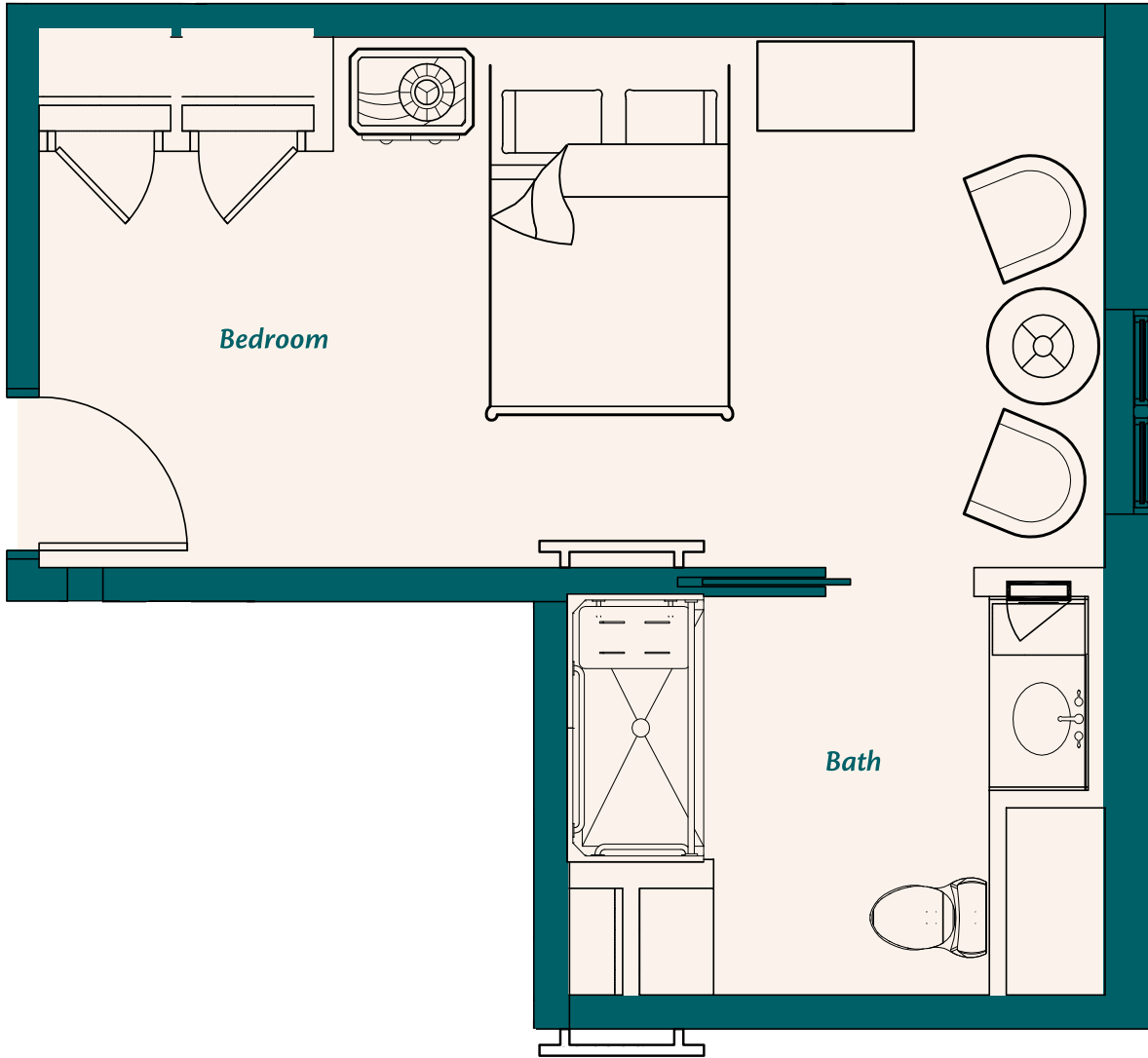
\$


HarborChase
Assisted Living • Memory Care



The Cedar

Memory Care



297-301 Sq. Ft. (Type MC-1A)

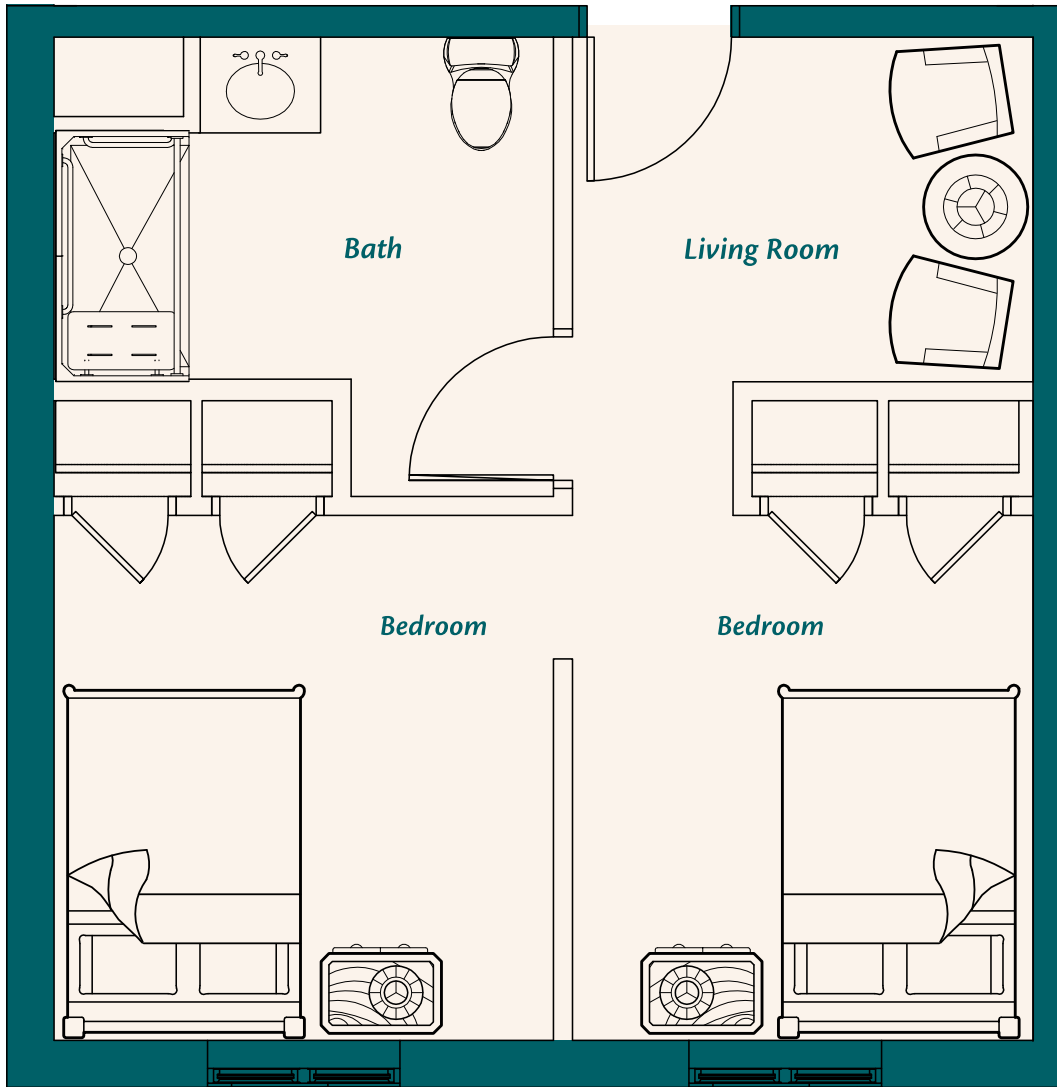
\$


HarborChase
Assisted Living • Memory Care



The Willow

Memory Care



426 Sq. Ft. (Type MC-3)

\$



HarborChase
Assisted Living • Memory Care

1619 N. Mill Street | Naperville, IL 60563 | Phone: (630) 778-3475
www.HarborChase.com

