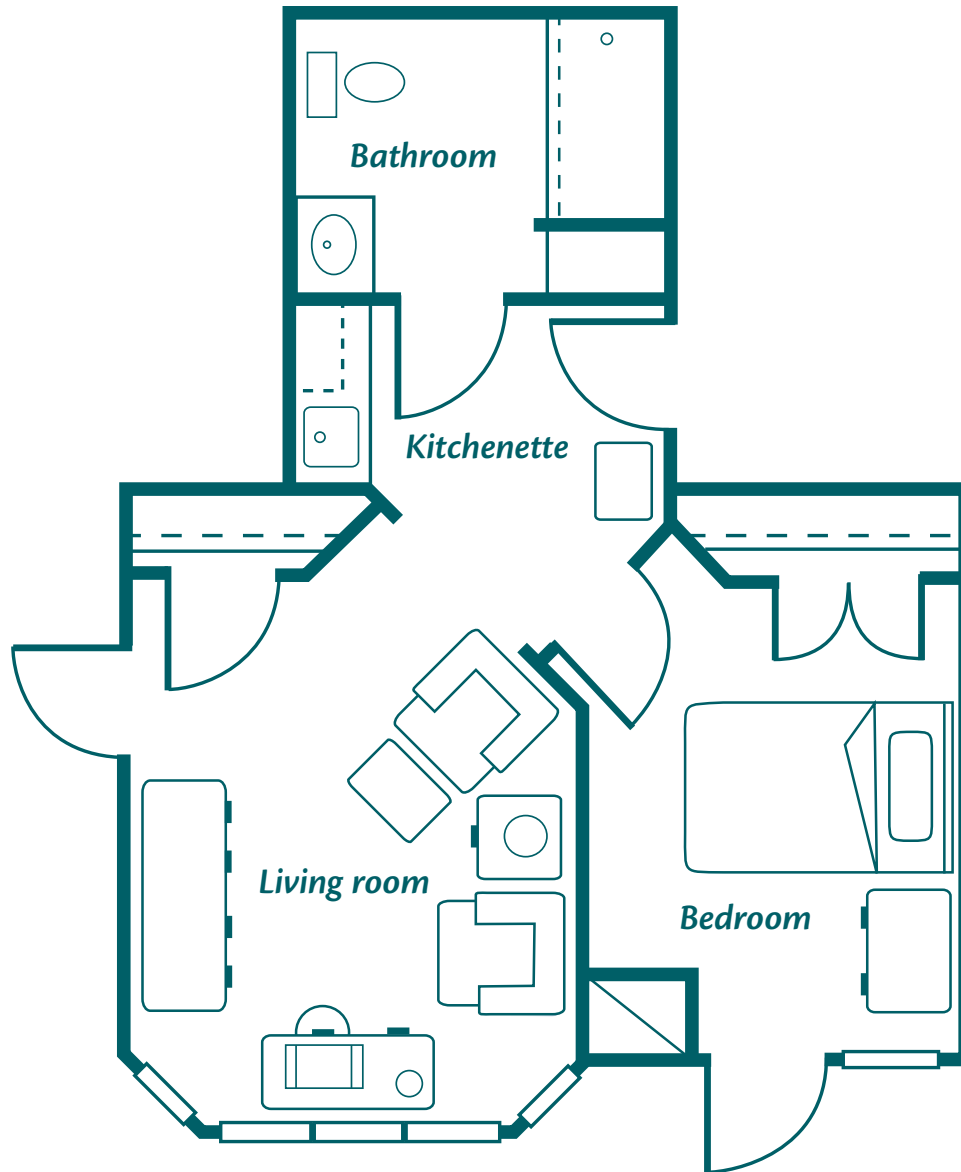


One Bedroom




\$

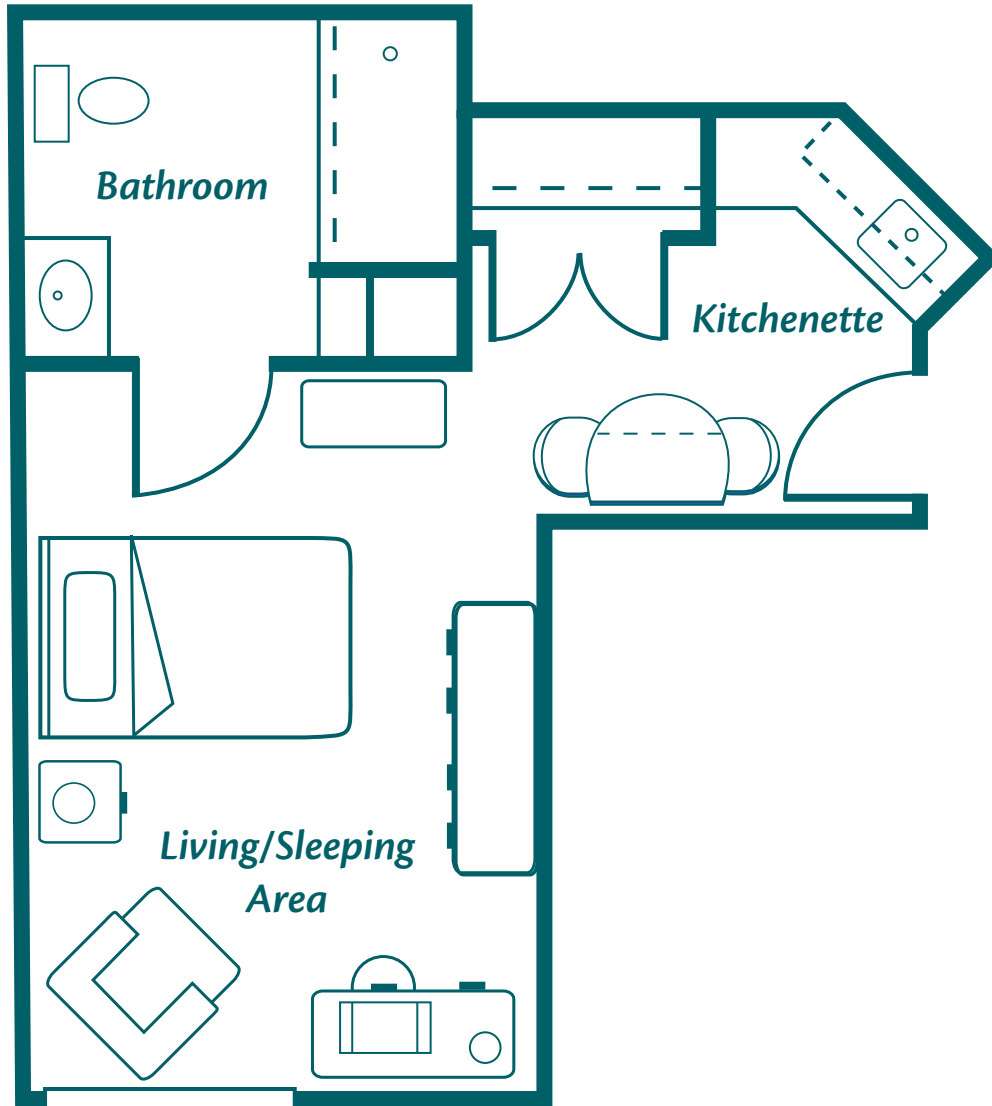


3455 San Pablo Road South | Jacksonville, FL 32224 | Phone: (904) 821-8030 | Fax: (904) 821-8002

www.HarborChase.com

Assisted Living Facility #AL9726 

Deluxe Studio




\$



3455 San Pablo Road South | Jacksonville, FL 32224 | Phone: (904) 821-8030 | Fax: (904) 821-8002

www.HarborChase.com

Assisted Living Facility #AL9726 

Deluxe Studio




\$

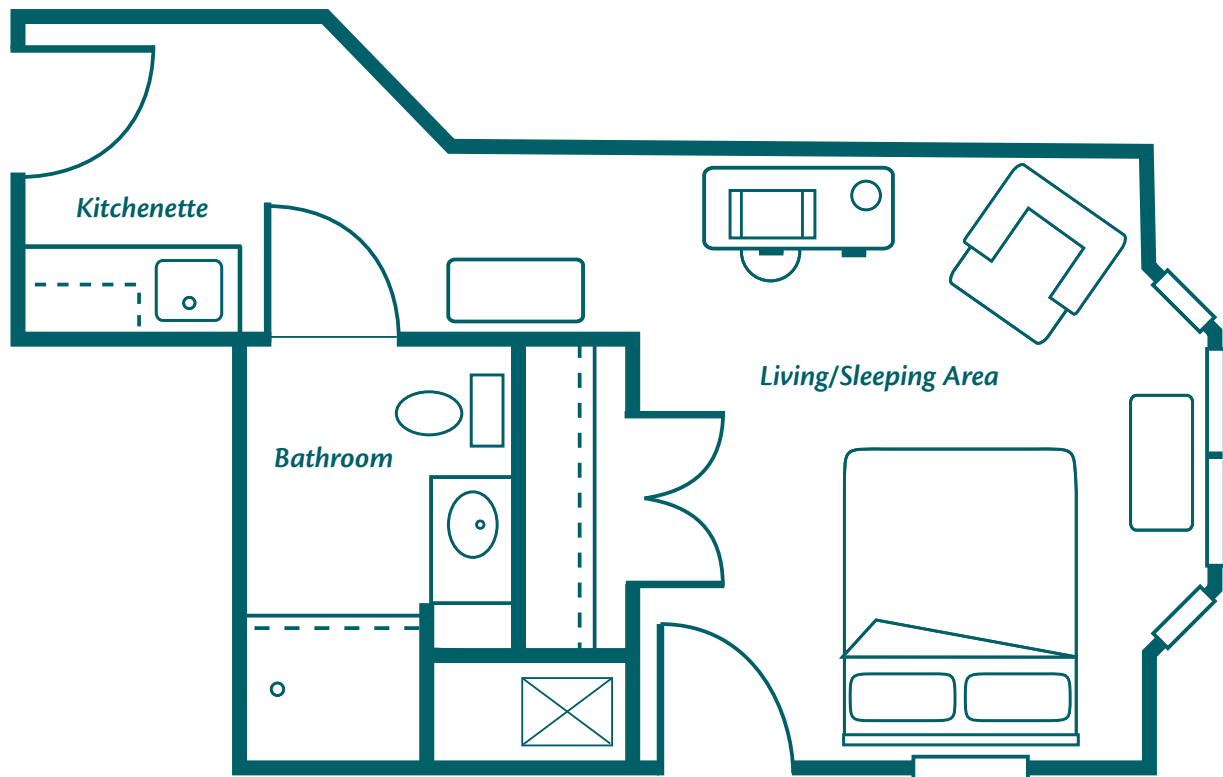


3455 San Pablo Road South | Jacksonville, FL 32224 | Phone: (904) 821-8030 | Fax: (904) 821-8002

www.HarborChase.com

Assisted Living Facility #AL9726 

Studio




\$

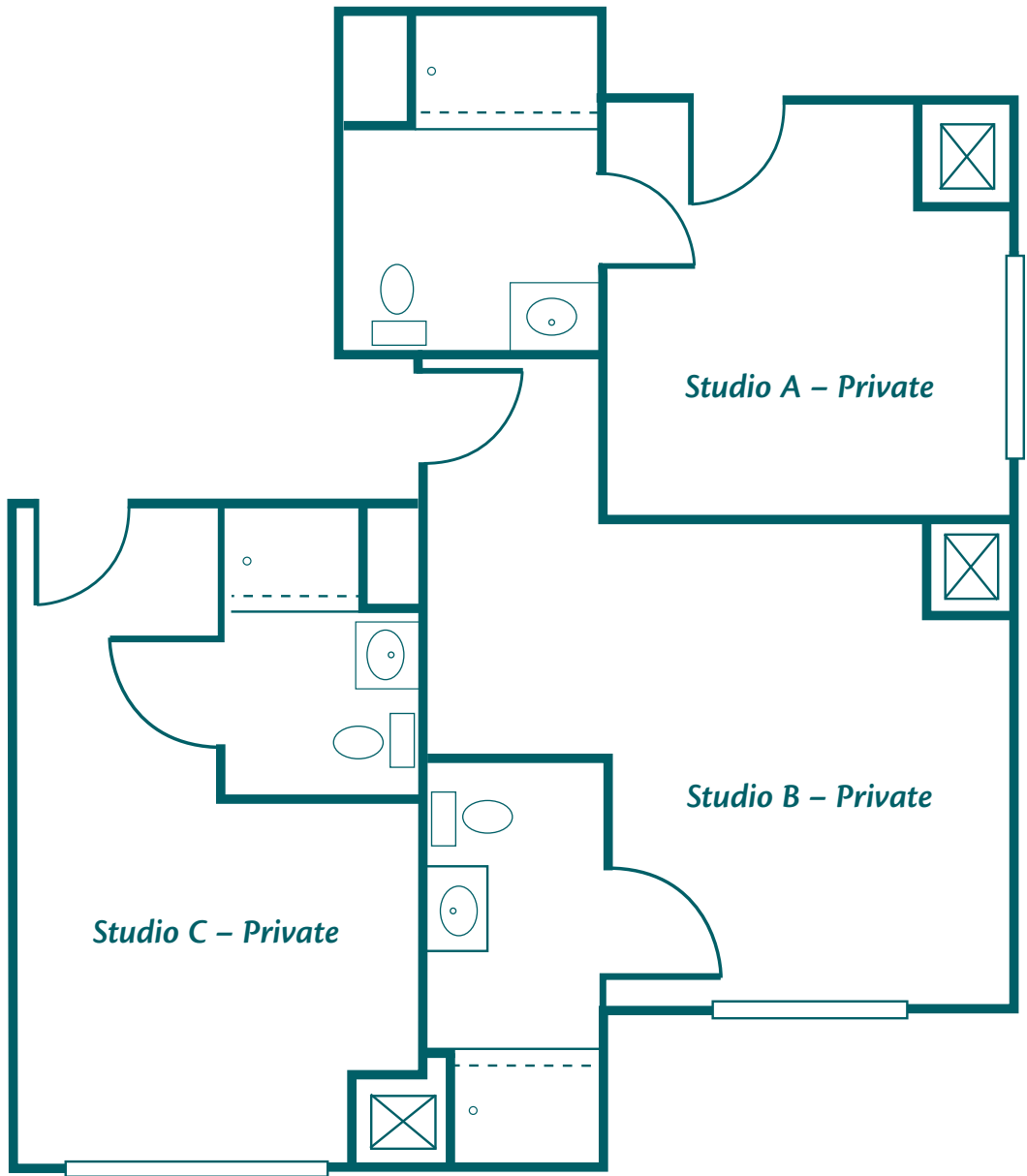


3455 San Pablo Road South | Jacksonville, FL 32224 | Phone: (904) 821-8030 | Fax: (904) 821-8002

www.HarborChase.com

Assisted Living Facility #AL9726 

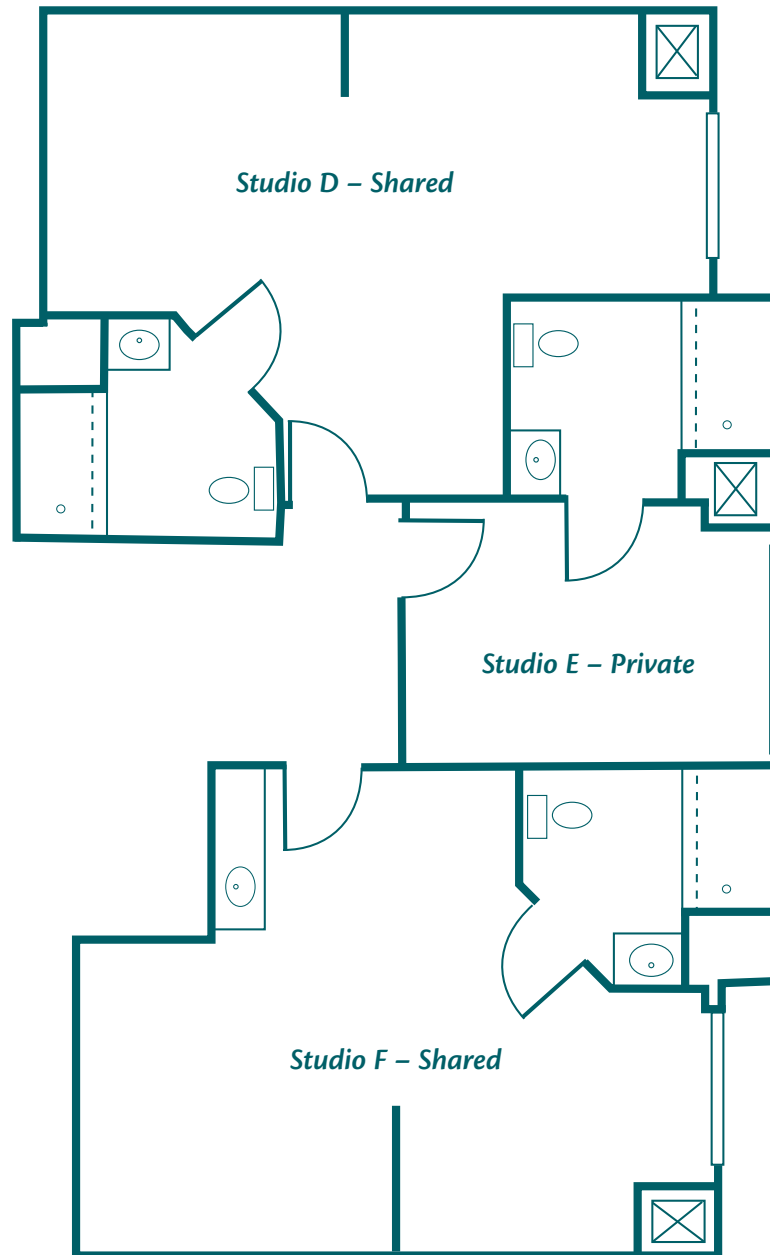
Studios A - C



\$



Studios D - F



\$



3455 San Pablo Road South | Jacksonville, FL 32224 | Phone: (904) 821-8030 | Fax: (904) 821-8002

www.HarborChase.com

Assisted Living Facility #AL9726 