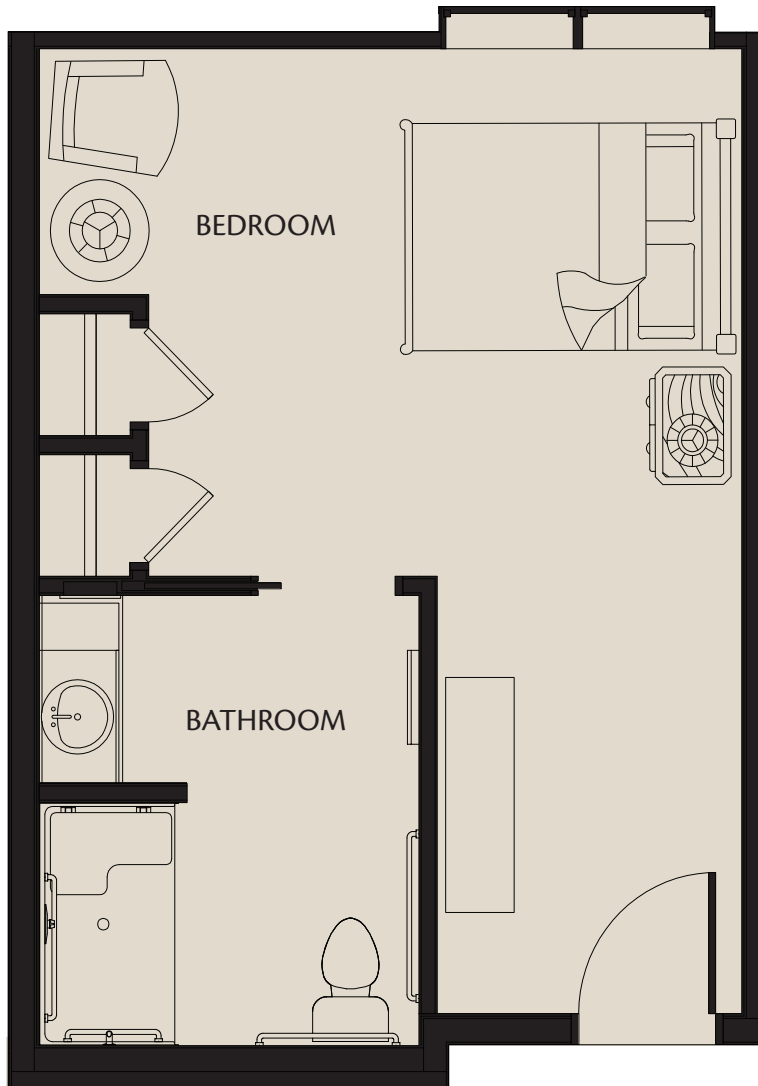




# The Clementine

Memory Support



292-388 sq. ft. (Unit A1 & A2)

\$

  
**HarborChase**  
Independent & Assisted Living  
Memory Care

**Dr. Phillips**



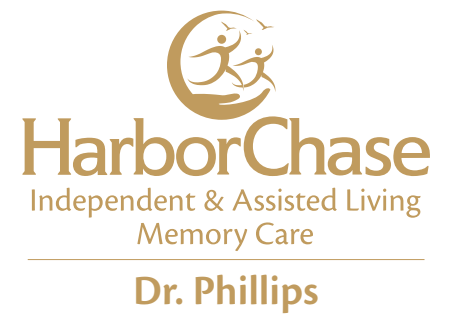
# The Tropicana

## Memory Support



360-407 sq. ft. (Unit B)

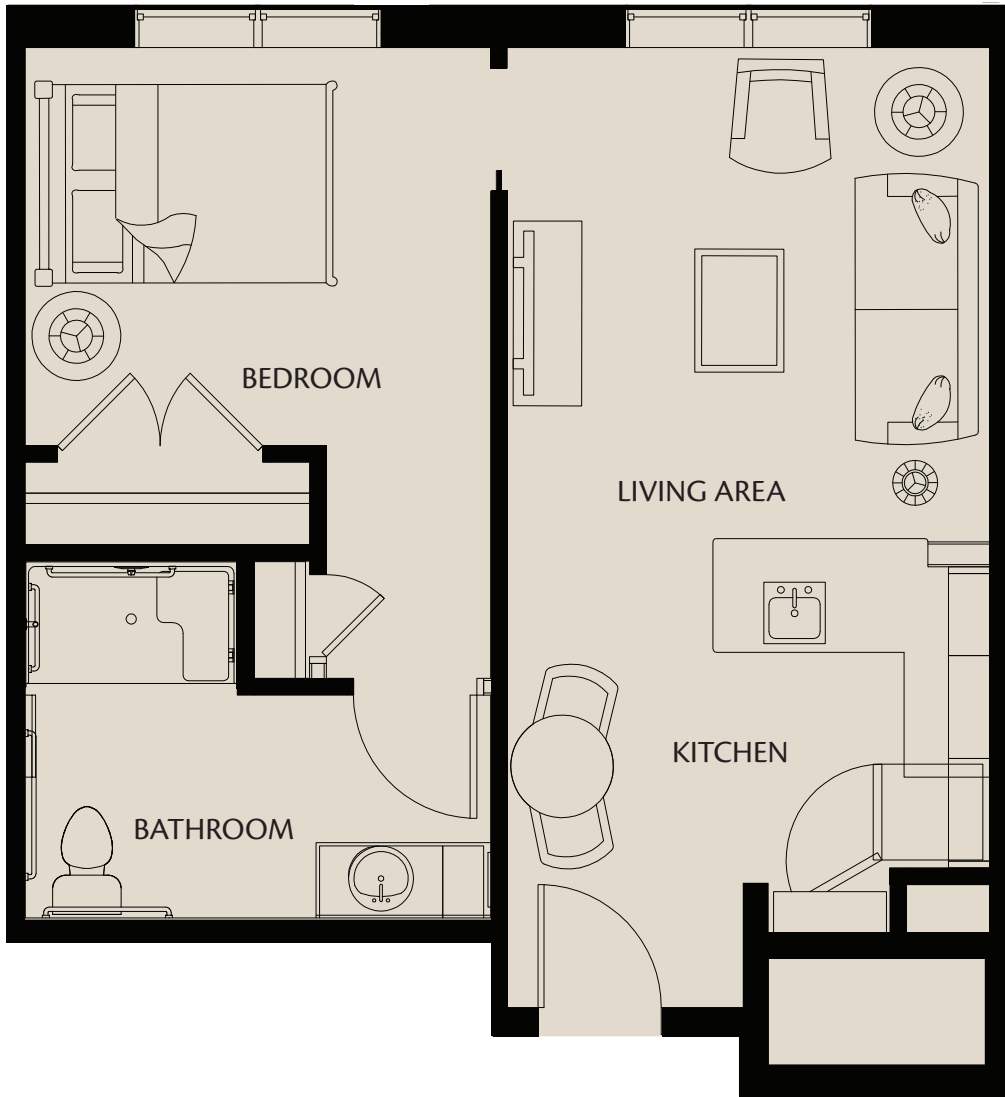
\$





# The Marcella

Assisted Living



490-629 sq. ft. (Unit A1, A1-HC, A2, A2-HC)

\$



**HarborChase**

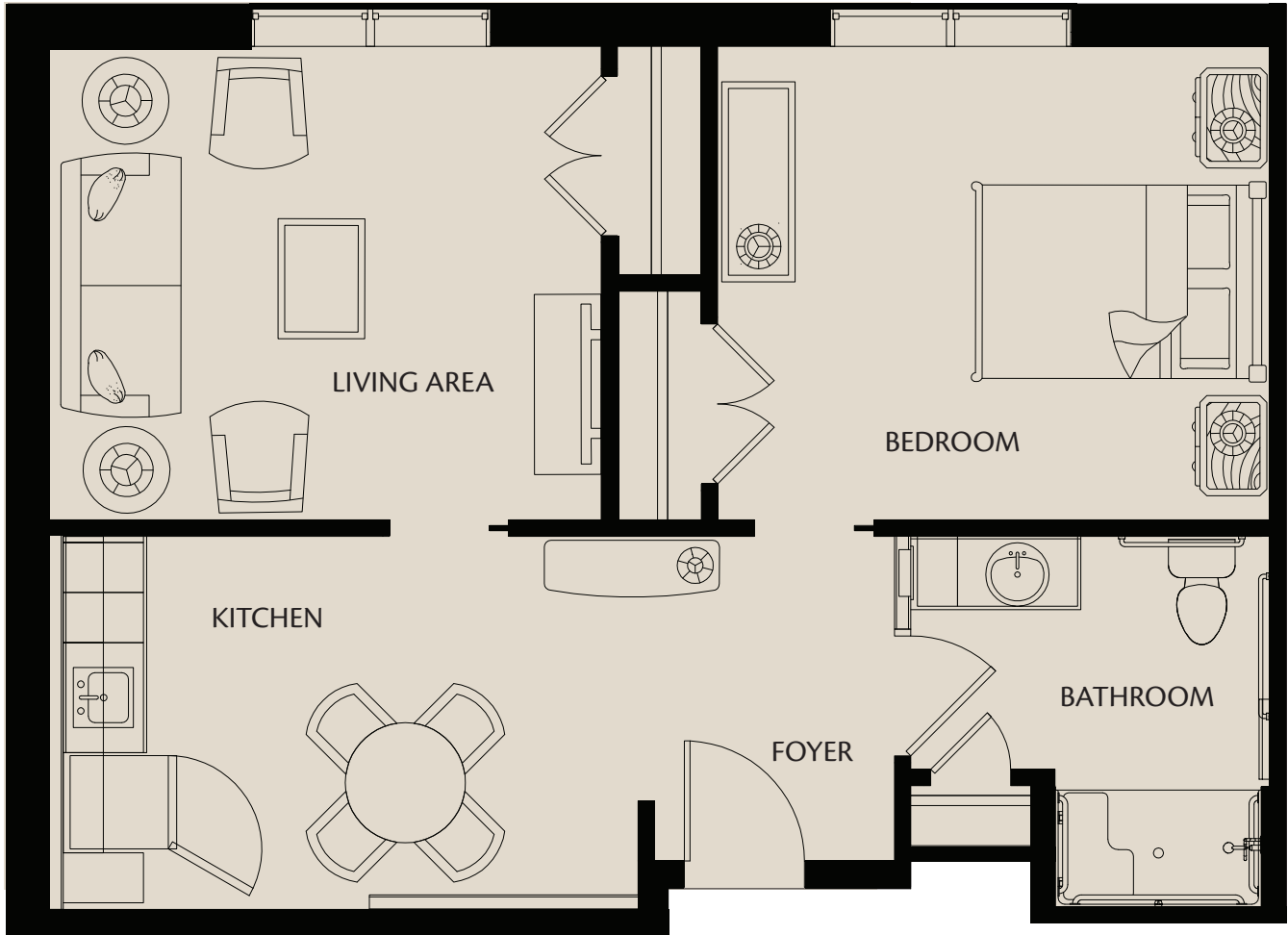
Independent & Assisted Living  
Memory Care

**Dr. Phillips**



# The Granada

Assisted Living



647-720 sq. ft. (Unit B1, B1-HC)

\$



**HarborChase**

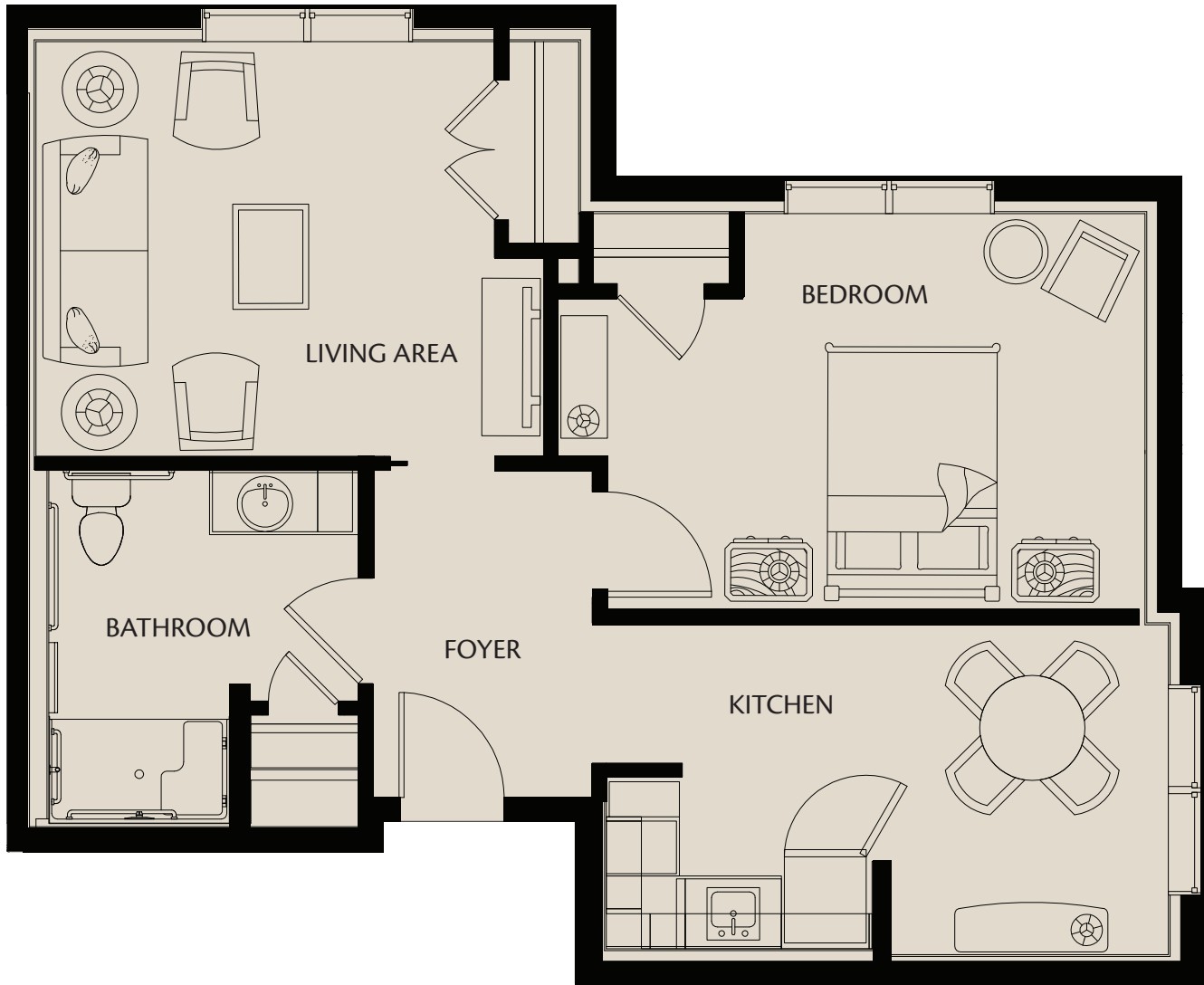
Independent & Assisted Living  
Memory Care

**Dr. Phillips**



# The Fenwick

Assisted Living



680-780 sq. ft. (Unit B2, B2-HC)

\$

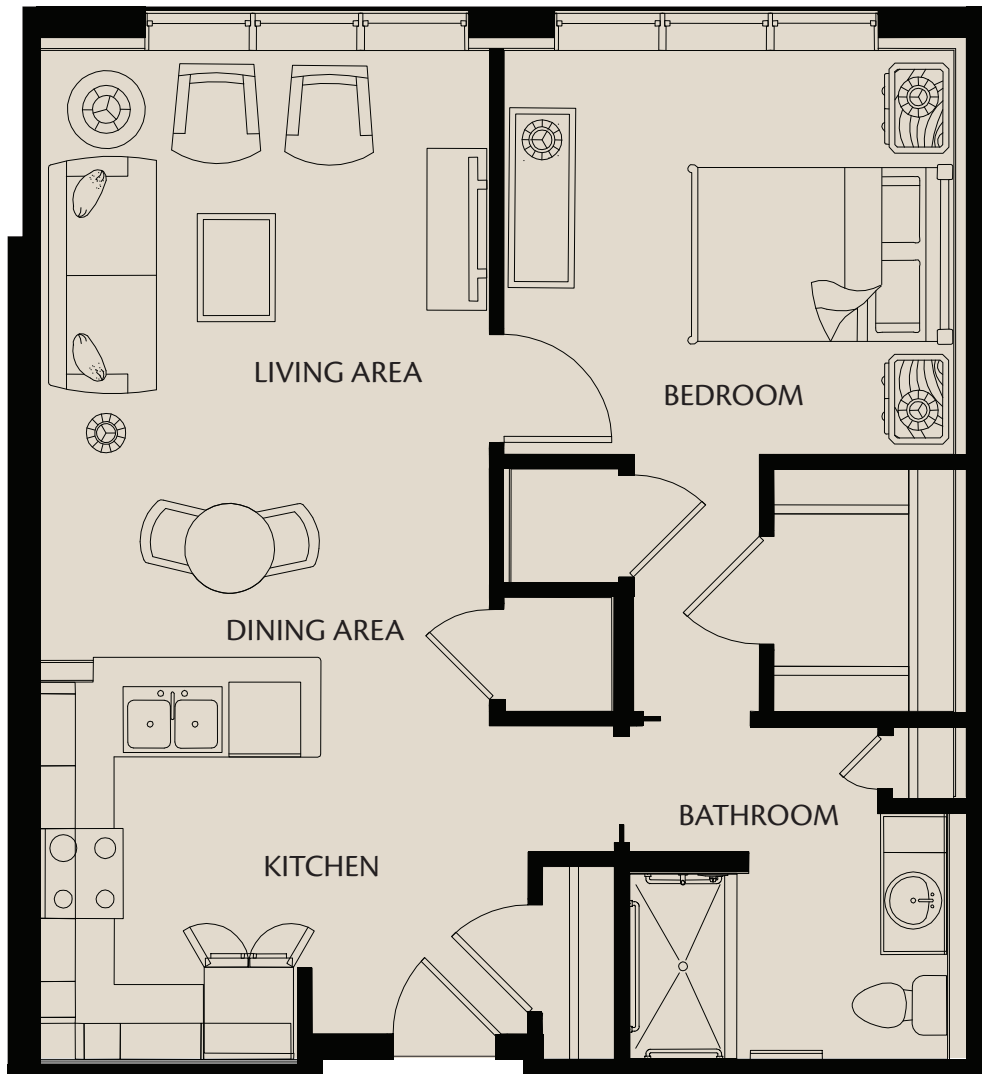
  
**HarborChase**  
Independent & Assisted Living  
Memory Care

**Dr. Phillips**



# The Bellemeade

Independent Living



708-917 sq. ft. (Unit A1, A1-HC, A2)

\$



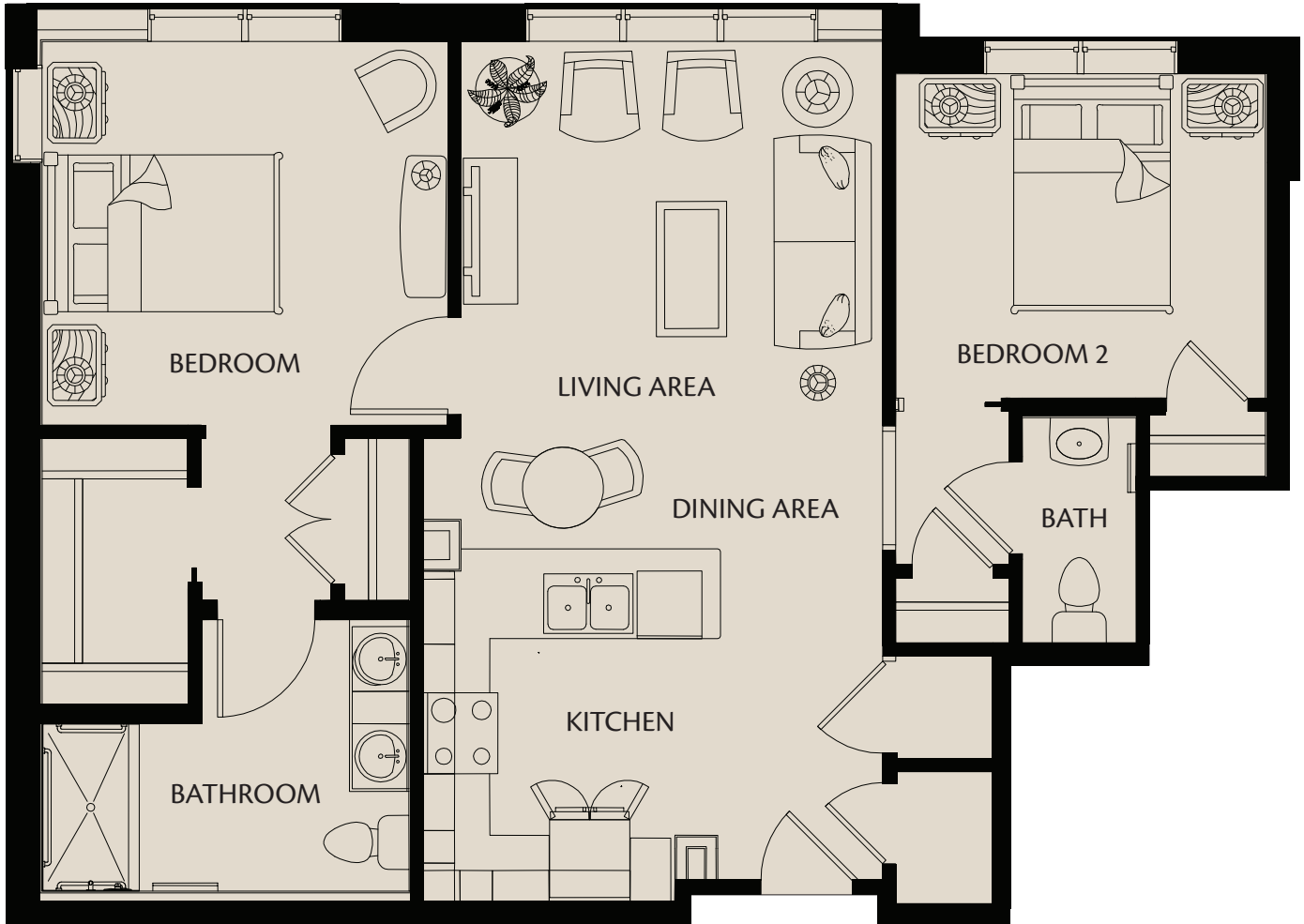
**HarborChase**  
Independent & Assisted Living  
Memory Care

**Dr. Phillips**



# The Turnberry

Independent Living



870-982 sq. ft. (Unit B1, B1-HC)

\$



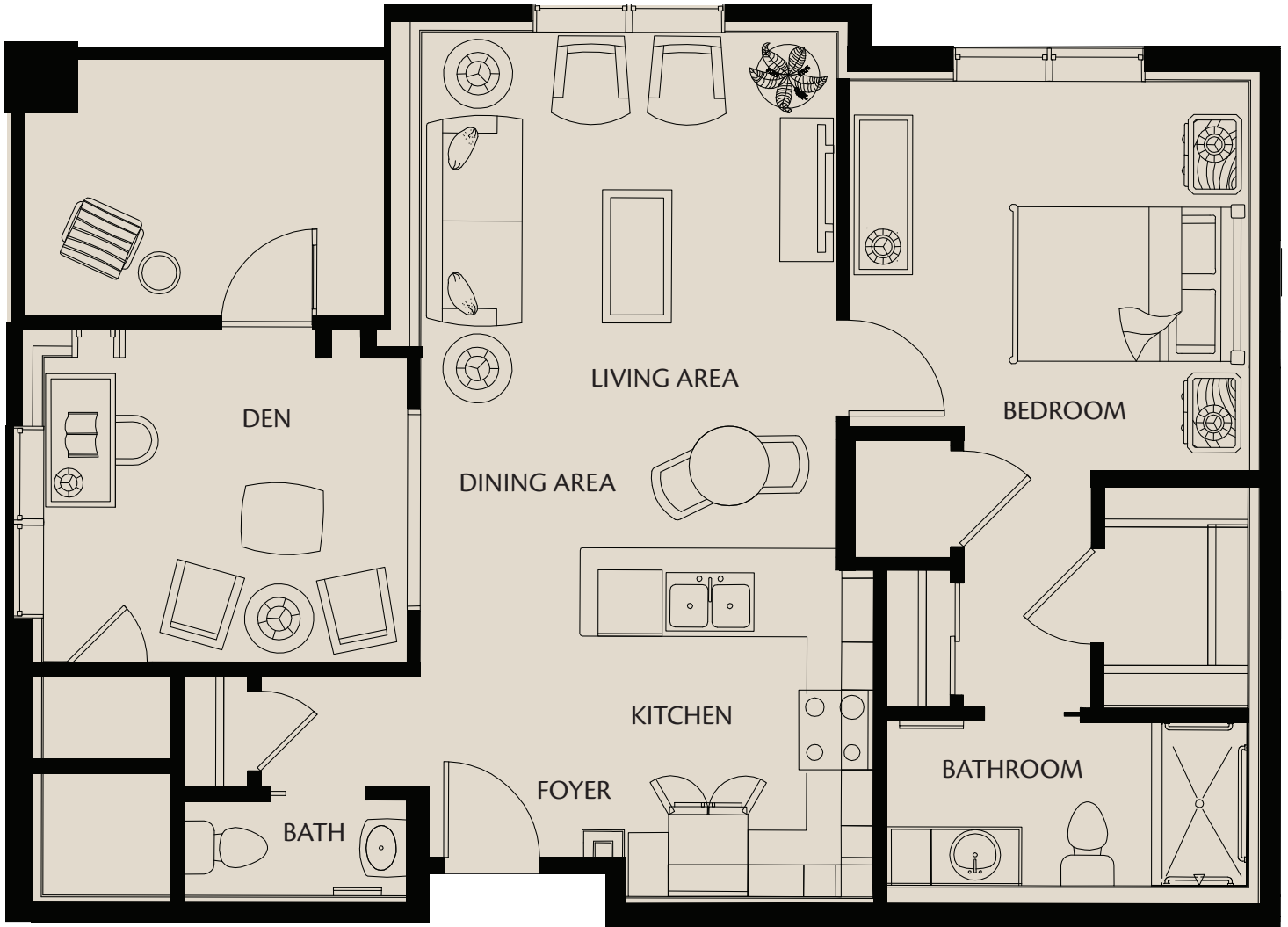
**HarborChase**  
Independent & Assisted Living  
Memory Care

**Dr. Phillips**



# The Cheshire

Independent Living



868-984 sq. ft. (Unit B2)

\$



**HarborChase**

Independent & Assisted Living  
Memory Care

**Dr. Phillips**

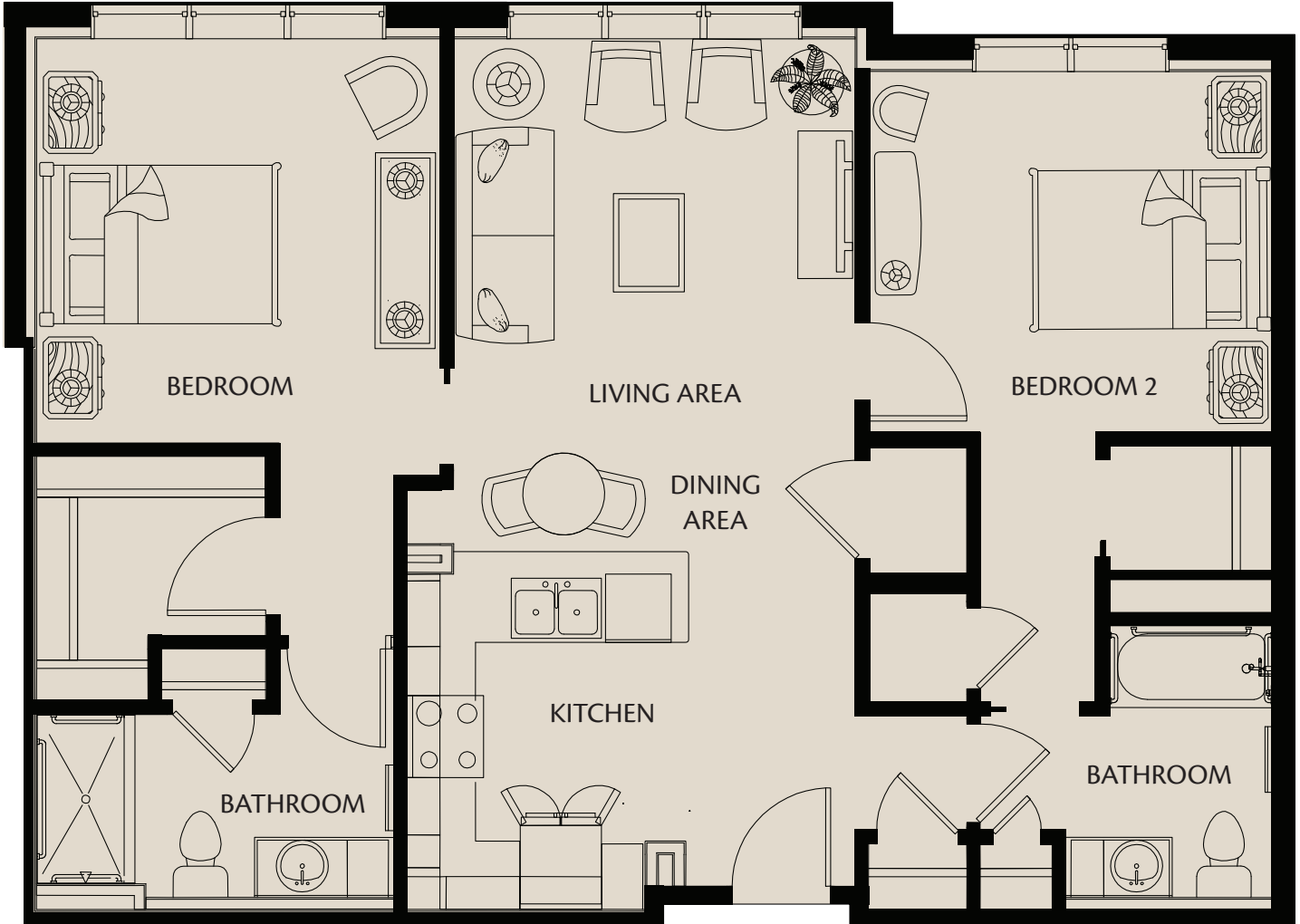






# The Edgeworth

Independent Living



979-1141 sq. ft. (Unit C)

\$

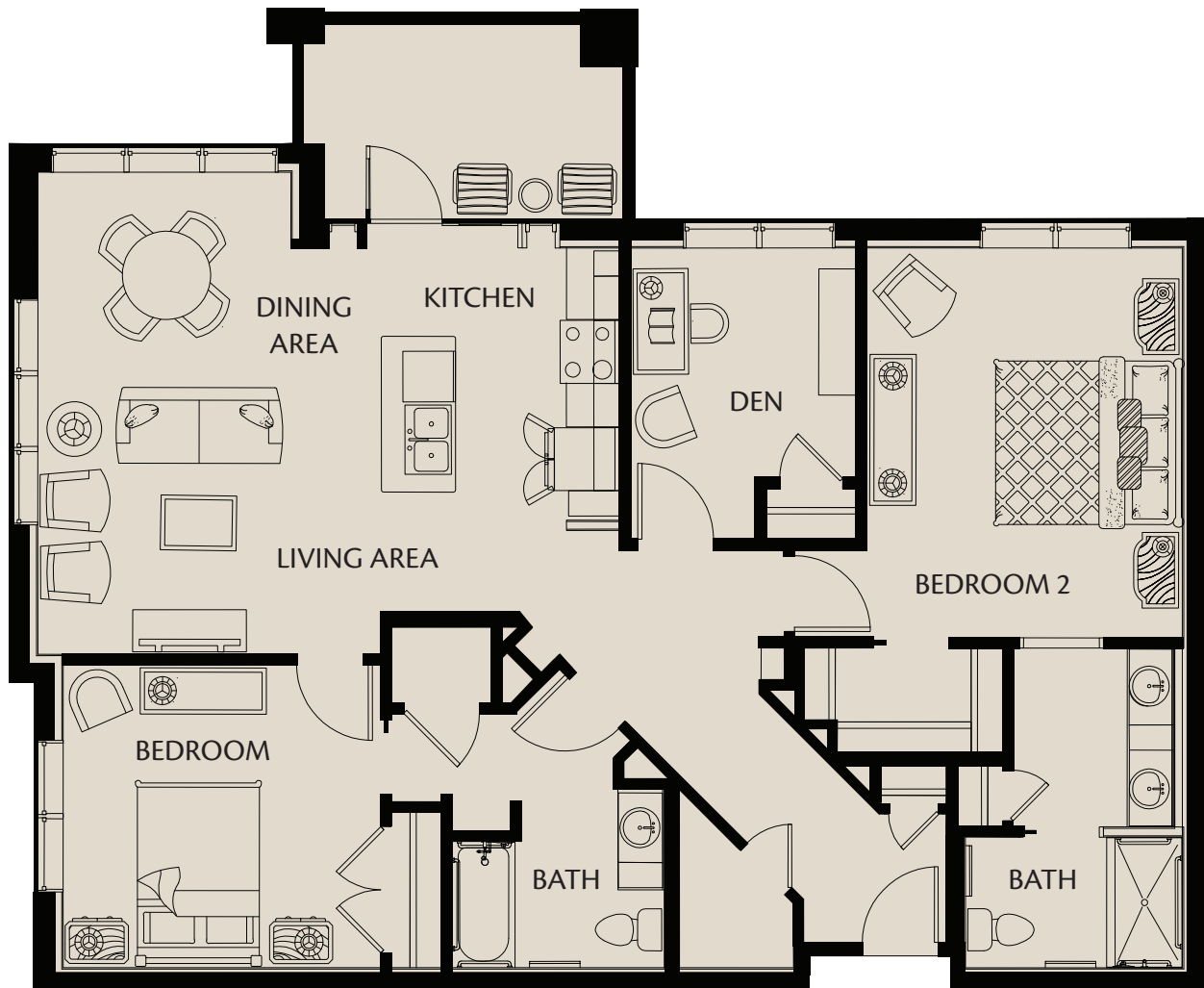
  
**HarborChase**  
Independent & Assisted Living  
Memory Care

**Dr. Phillips**



# The Hinson

Independent Living



1,300-1,440 sq. ft. (Unit D1, D2)

\$



**HarborChase**  
Independent & Assisted Living  
Memory Care

**Dr. Phillips**