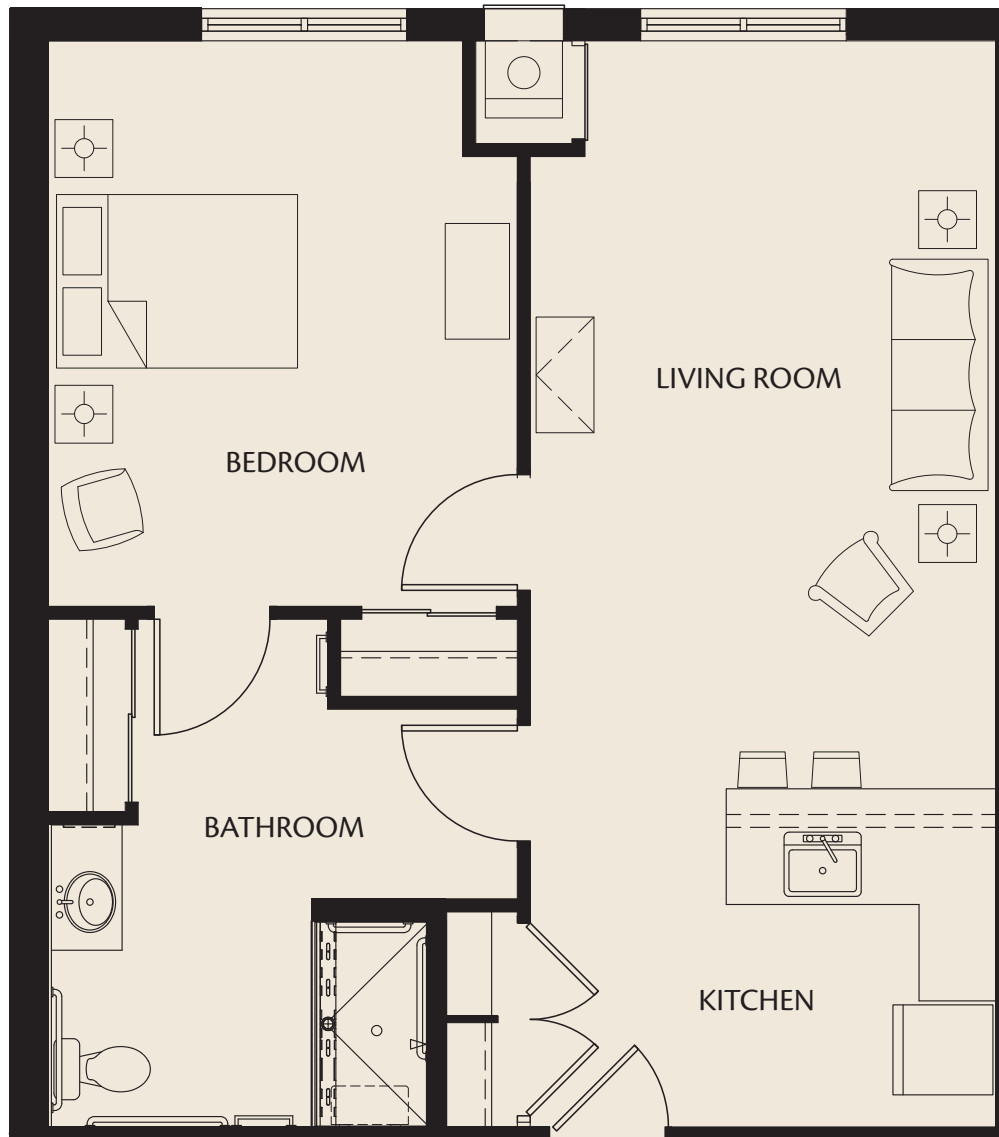




The Belmore

ASSISTED LIVING – 1 BEDROOM



662–748 Sq. Ft.

\$



HarborChase
Assisted Living • Memory Care

Wellington Crossing



The Canterbury

ASSISTED LIVING – 1 BEDROOM



595–669 Sq. Ft.

\$



HarborChase
Assisted Living • Memory Care

Wellington Crossing



The Chatsworth

ASSISTED LIVING – 1 BEDROOM



575 Sq. Ft.

\$



HarborChase
Assisted Living • Memory Care

Wellington Crossing



The Lakeside

ASSISTED LIVING – 1 BEDROOM



671 Sq. Ft.

\$



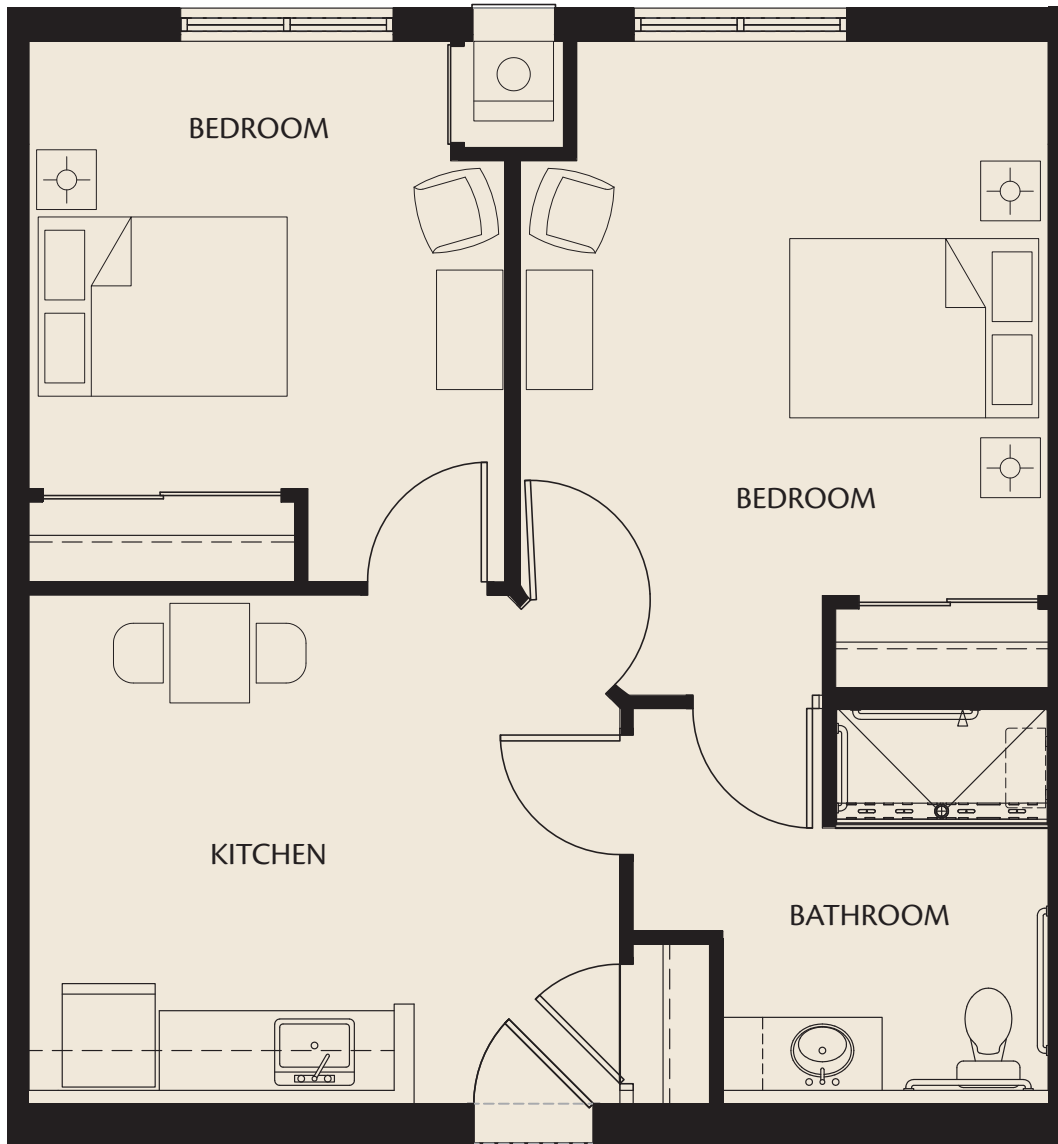
HarborChase
Assisted Living • Memory Care

Wellington Crossing



The Derby

ASSISTED LIVING – 2 BEDROOM



663–739 Sq. Ft.

\$



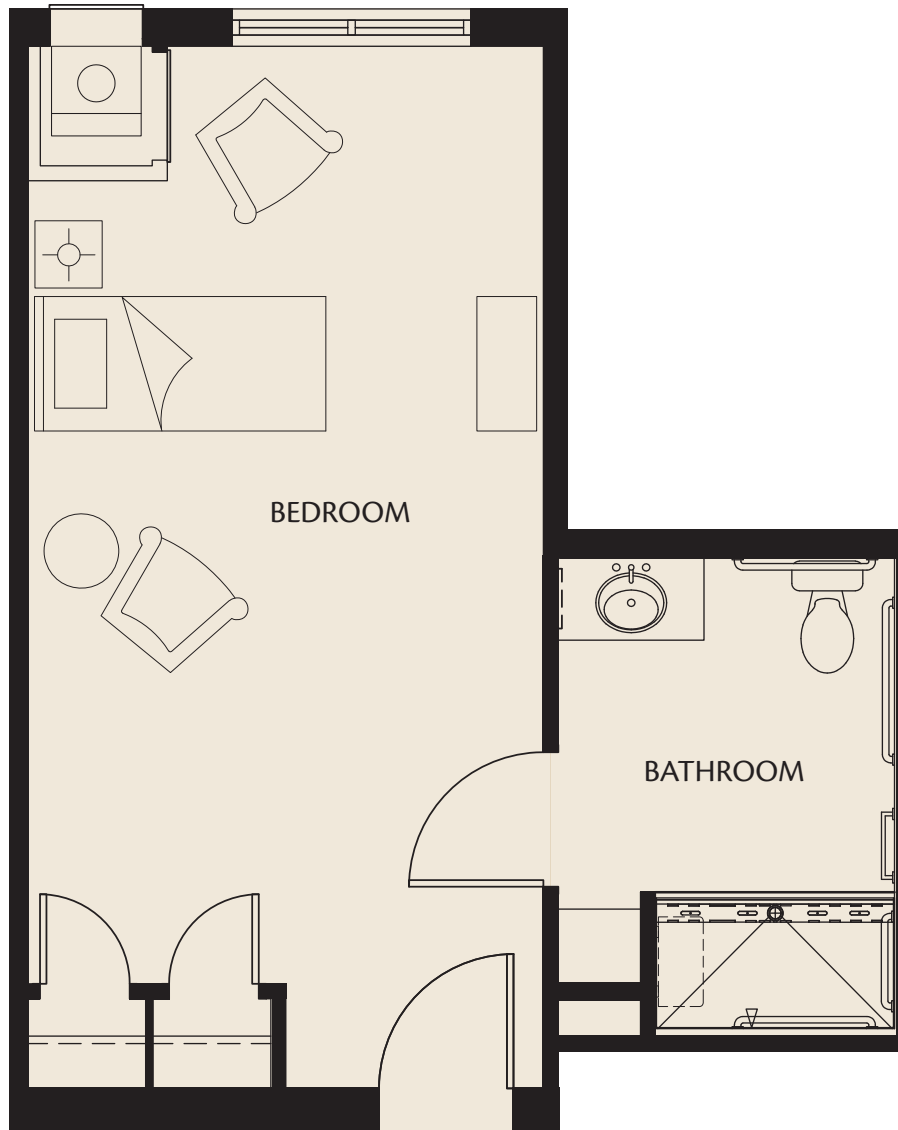
HarborChase
Assisted Living • Memory Care

Wellington Crossing



The Carriage

MEMORY CARE – 1 BEDROOM



385–466 Sq. Ft.

\$



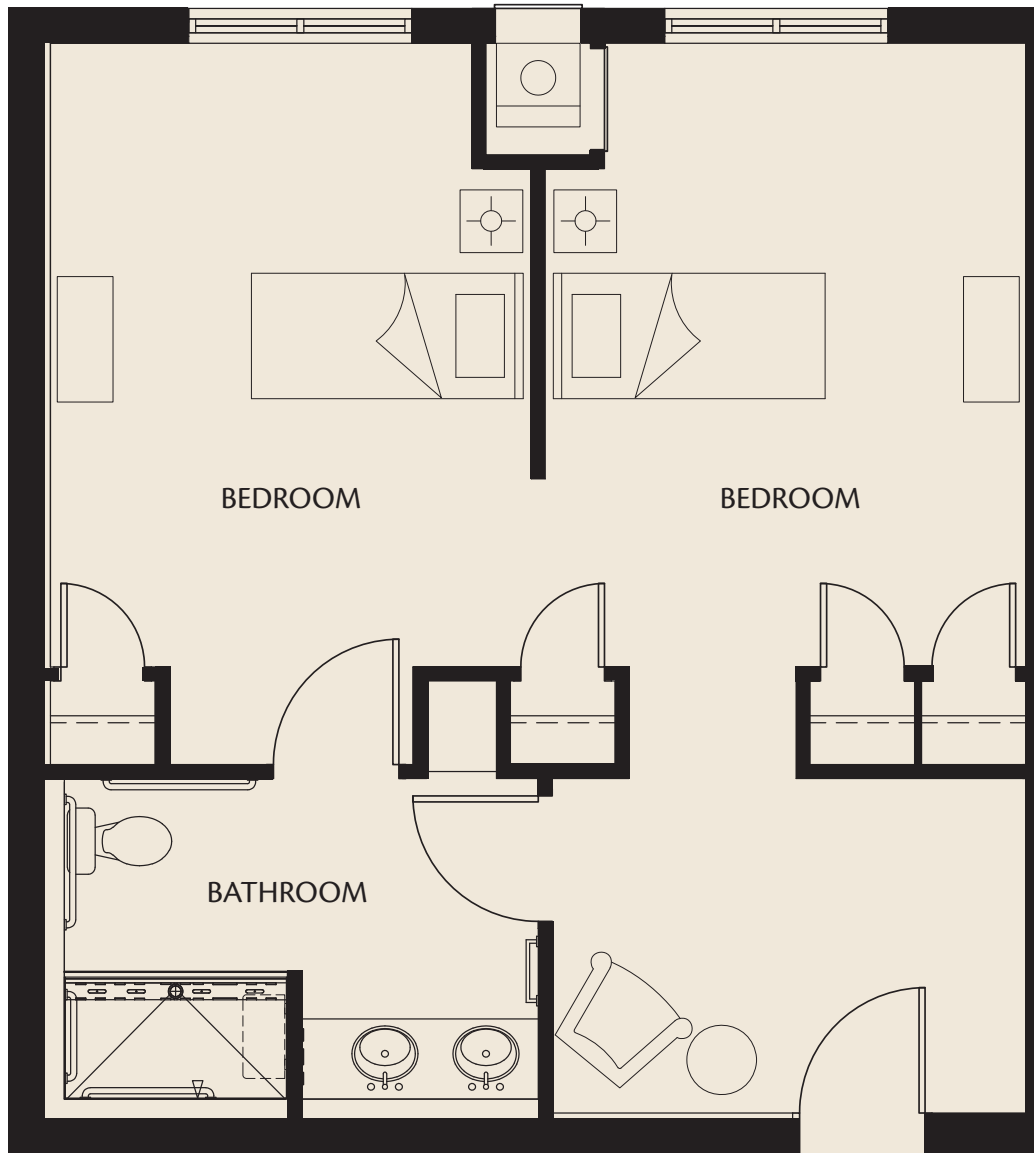
HarborChase
Assisted Living • Memory Care

Wellington Crossing



The Kingsbury

MEMORY CARE – 2 BEDROOM



601–651 Sq. Ft.

\$



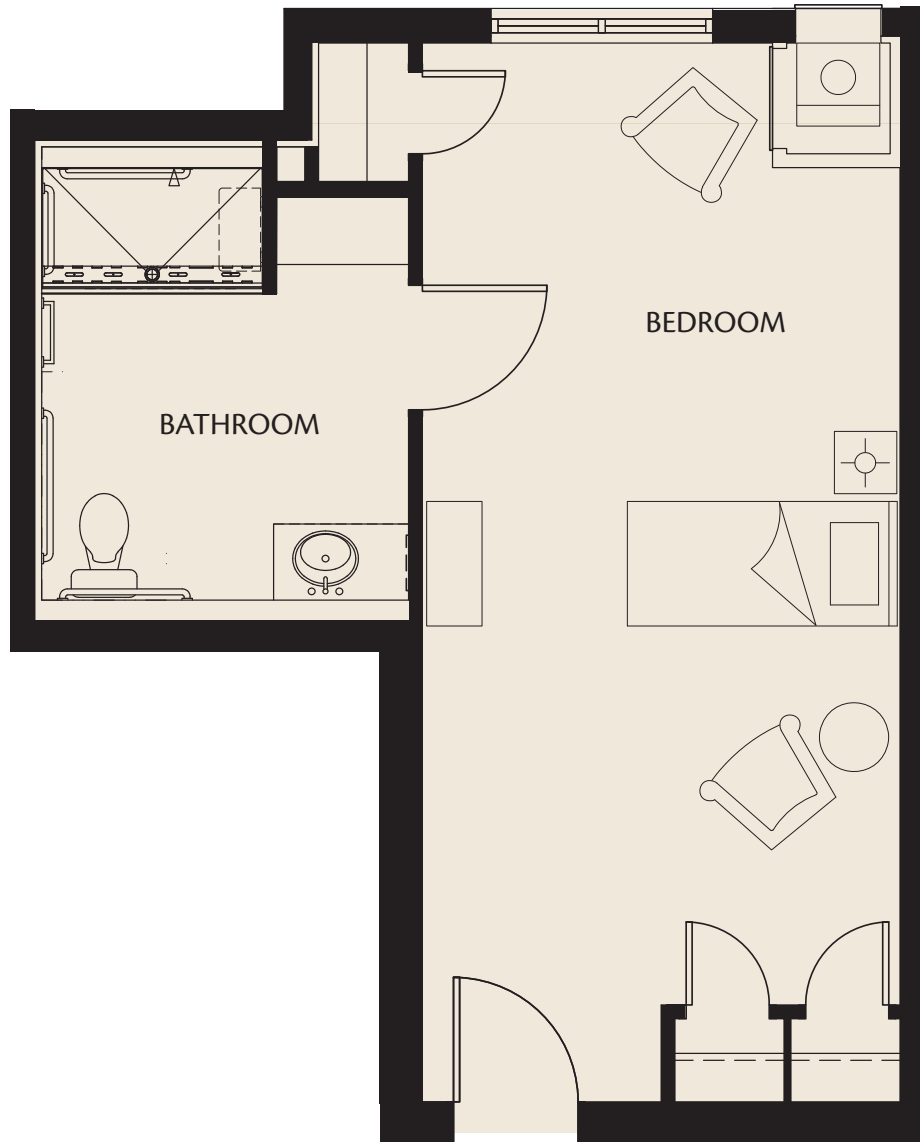
HarborChase
Assisted Living • Memory Care

Wellington Crossing



The Primrose

MEMORY CARE – 1 BEDROOM



385–420 Sq. Ft.

\$



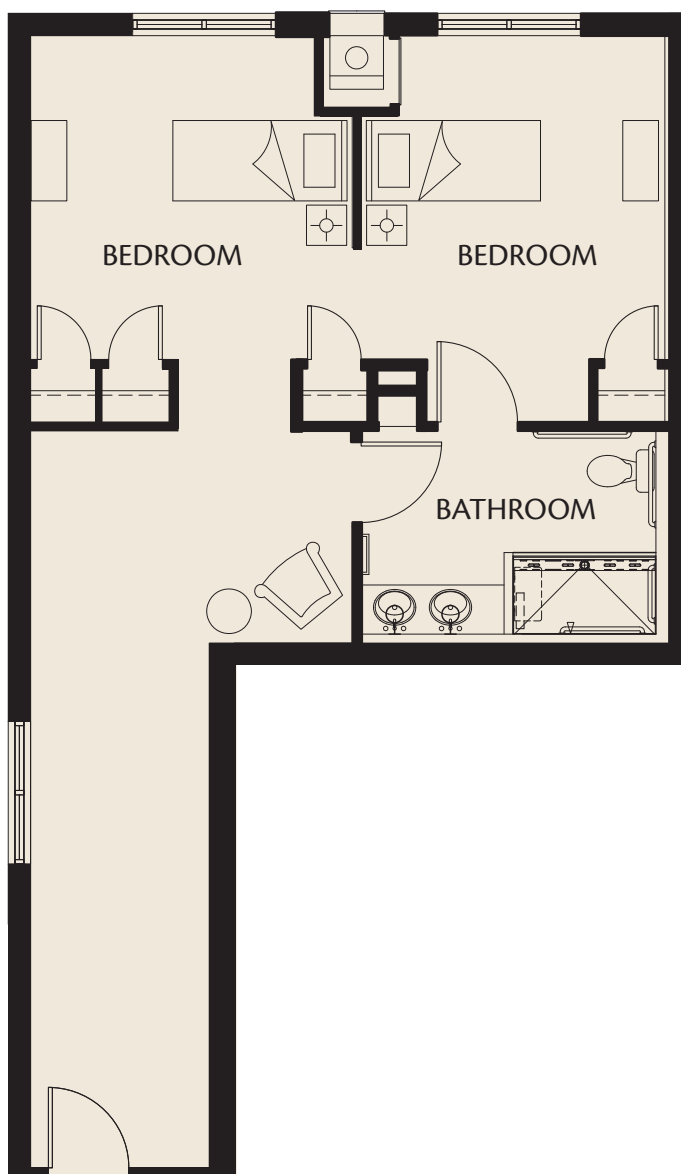
HarborChase
Assisted Living • Memory Care

Wellington Crossing



The Cedar

MEMORY CARE – 2 BEDROOM



660 Sq. Ft.

\$



HarborChase
Assisted Living • Memory Care

Wellington Crossing