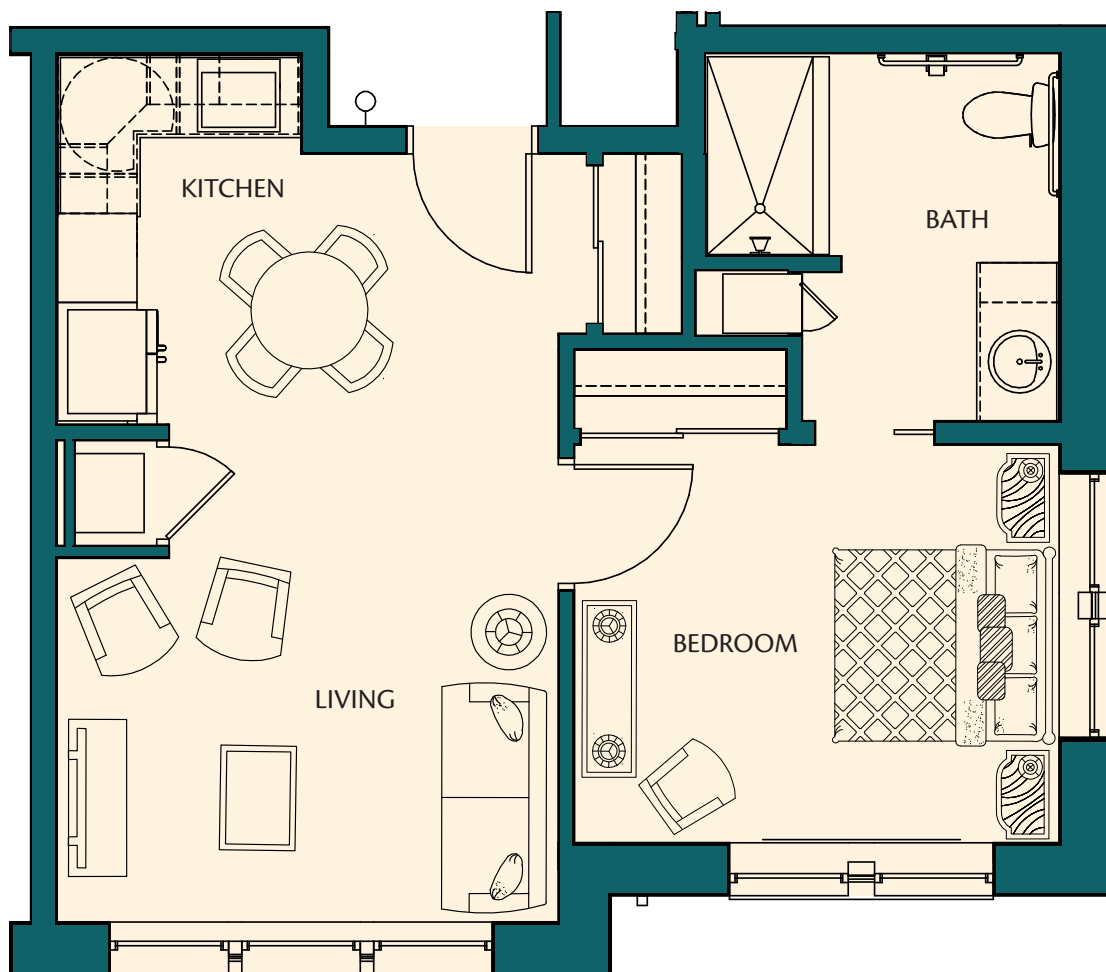


The Hawthorn

Assisted Living



AL 498-624 Sq. Ft.

\$



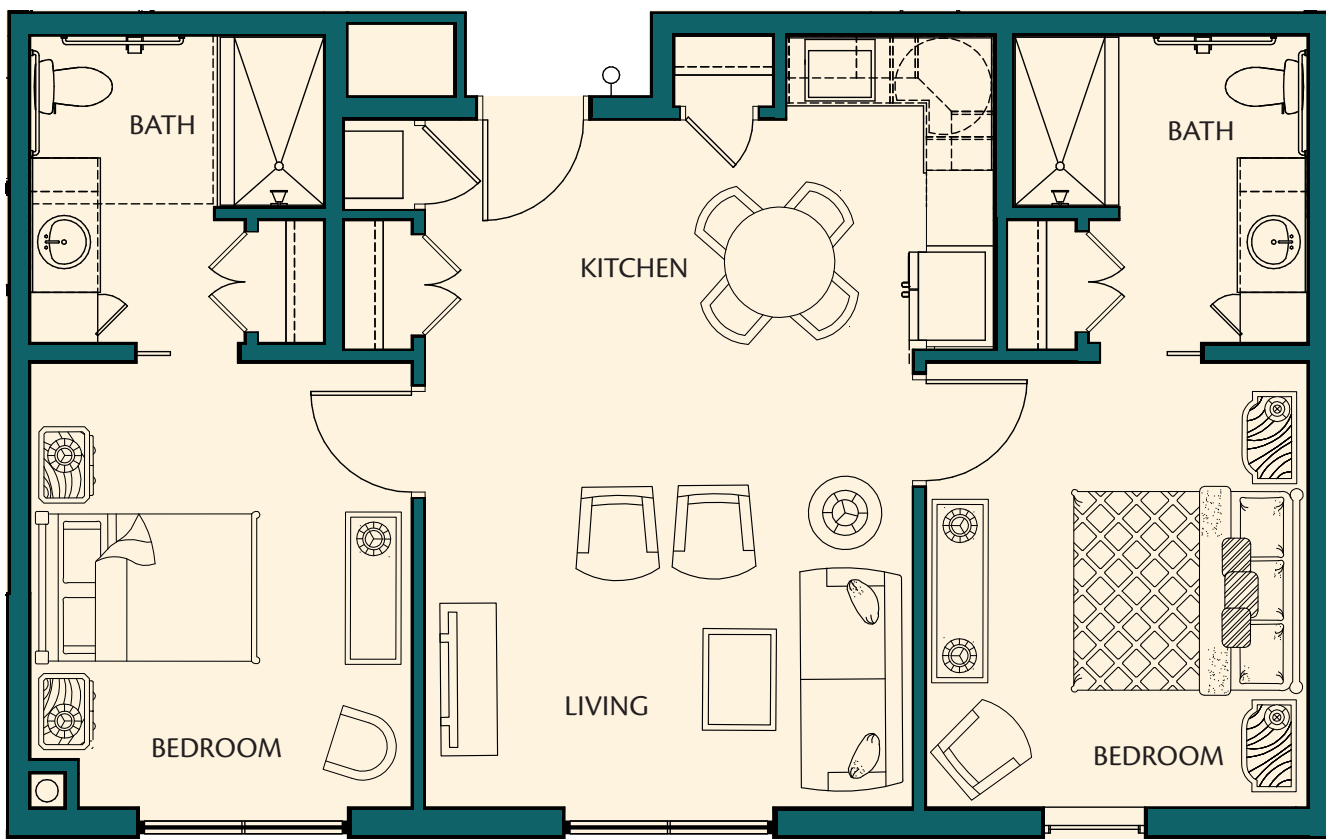
3310 Noble Pond Way, Suite 223 | Woodbridge, VA 22193 | (703) 721-8801

www.HarborChase.com



The Cherry Blossom

Assisted Living



AL 850-853 Sq. Ft.

\$



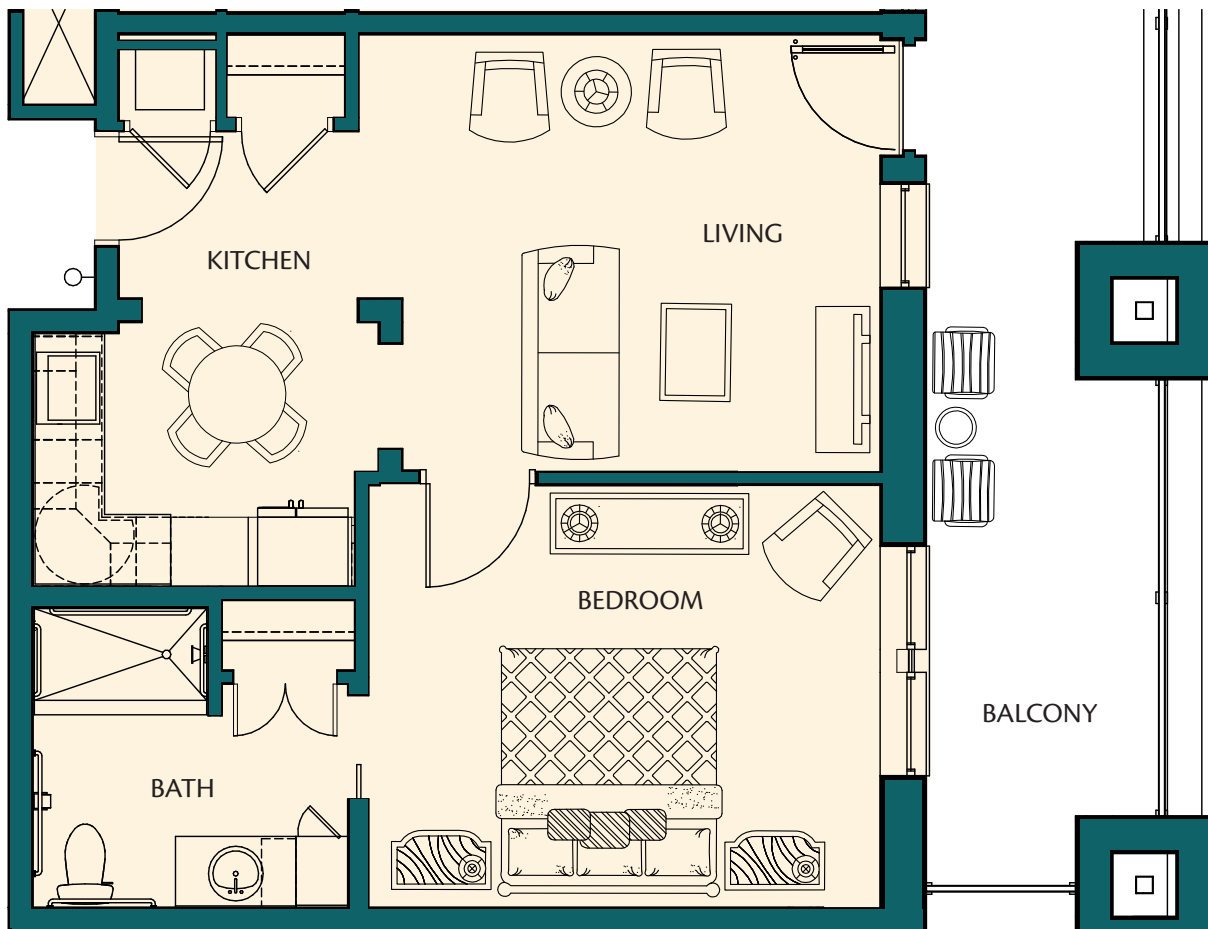
3310 Noble Pond Way, Suite 223 | Woodbridge, VA 22193 | (703) 721-8801

www.HarborChase.com



The Lilac

Assisted Living



AL 516-601 Sq. Ft.

\$


HarborChase
Assisted Living • Memory Care
Prince William Commons

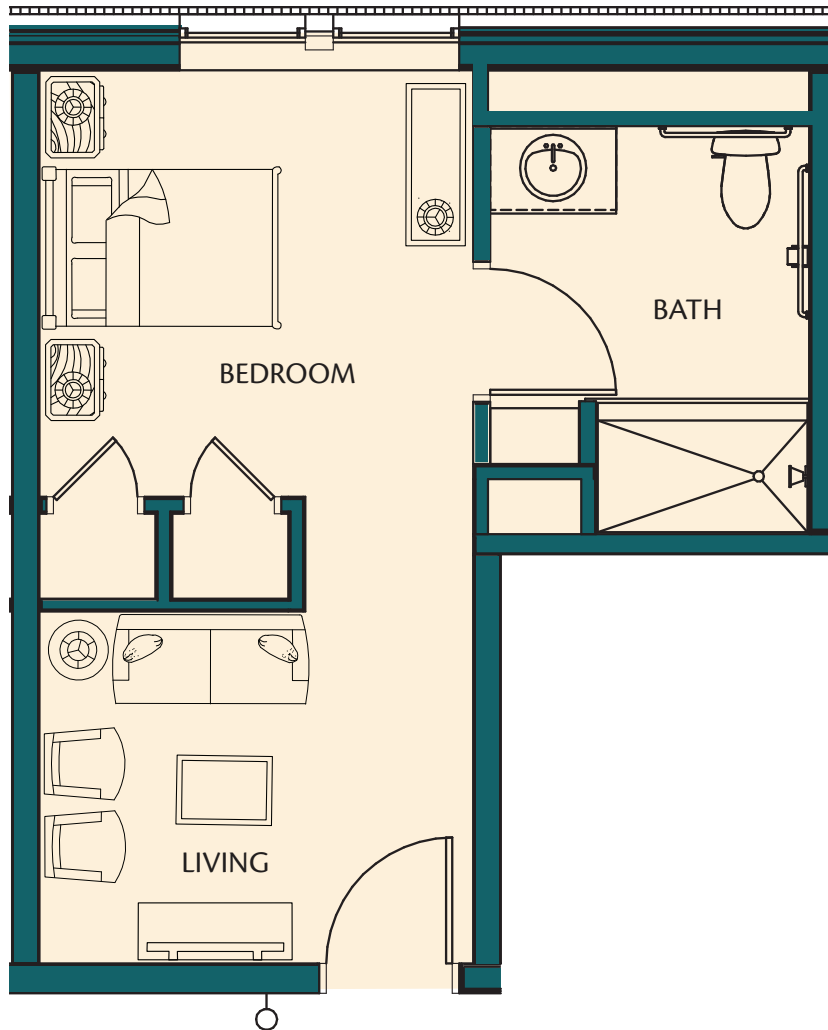
3310 Noble Pond Way, Suite 223 | Woodbridge, VA 22193 | (703) 721-8801

www.HarborChase.com



The Dogwood

Memory Care



MC 297-309 Sq. Ft.

\$



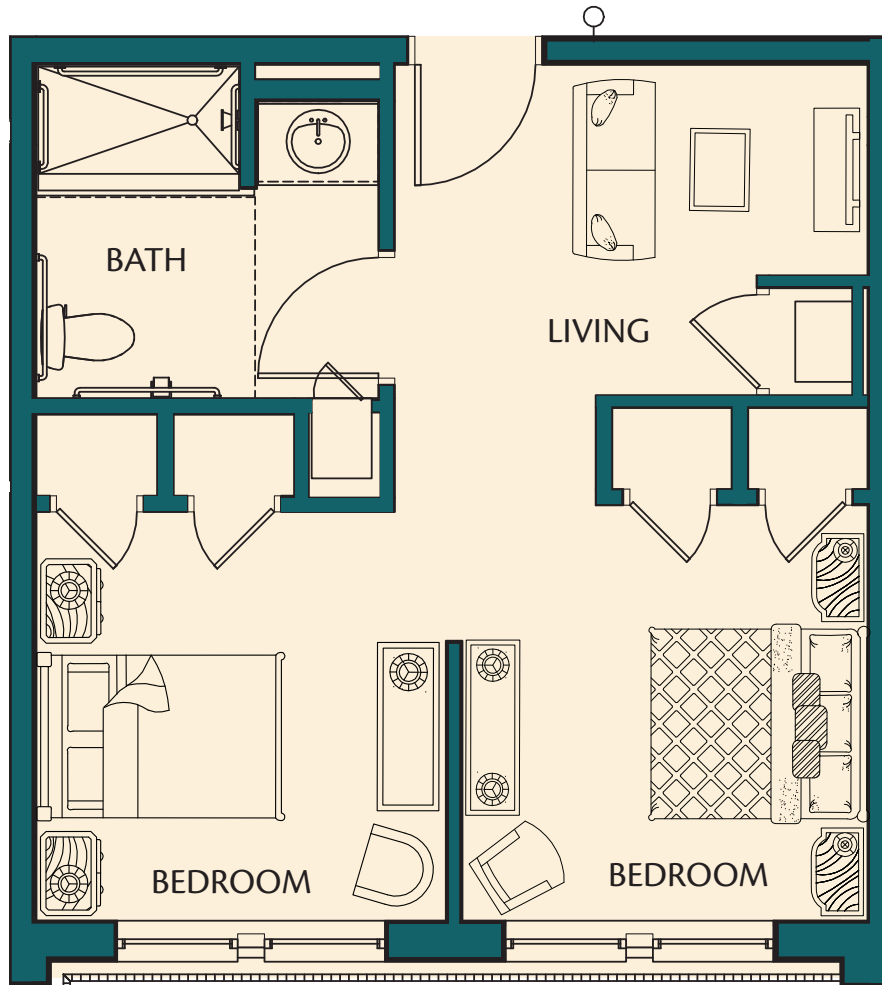
3310 Noble Pond Way, Suite 223 | Woodbridge, VA 22193 | (703) 721-8801

www.HarborChase.com



The Magnolia

Memory Care



MC 440-454 Sq. Ft.

\$


HarborChase
Assisted Living • Memory Care
Prince William Commons

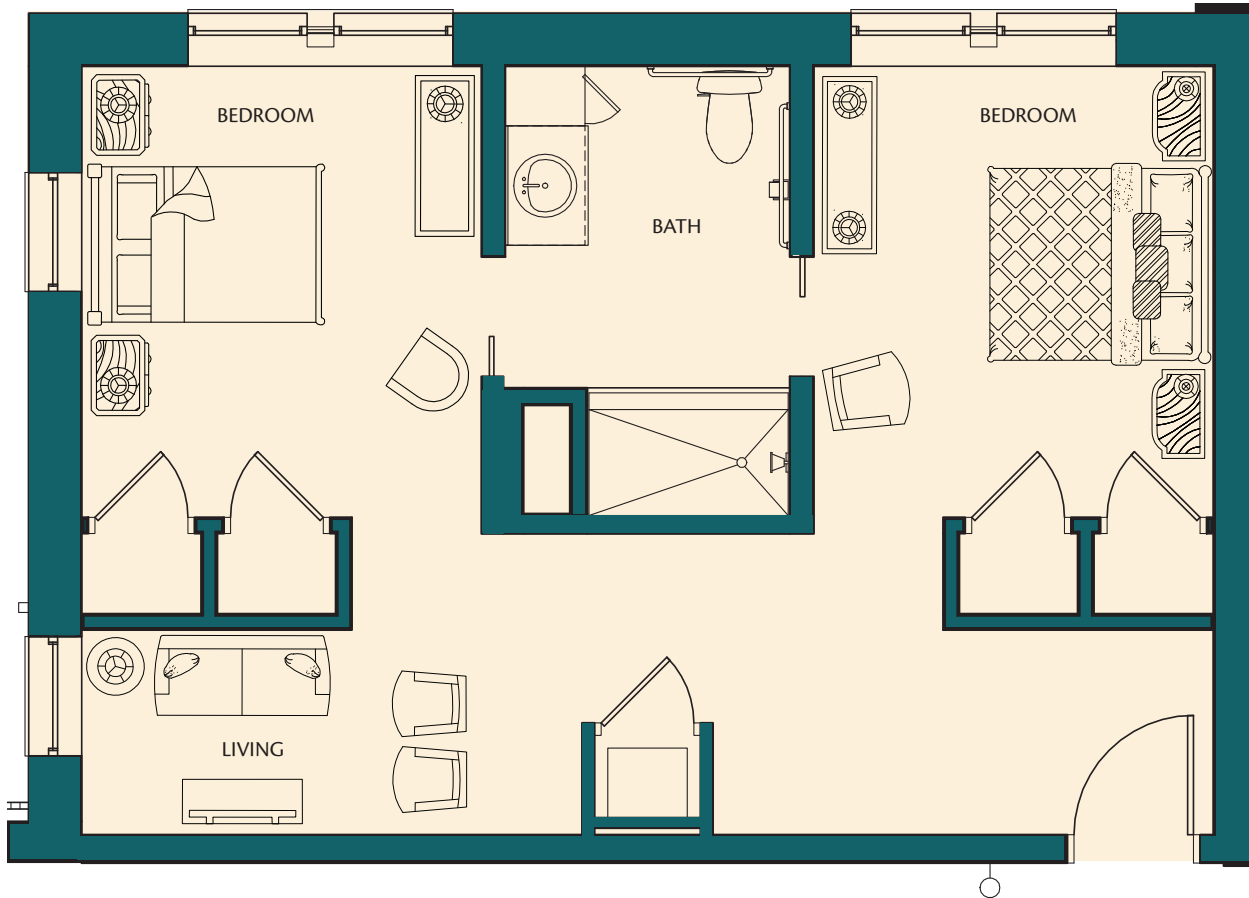
3310 Noble Pond Way, Suite 223 | Woodbridge, VA 22193 | (703) 721-8801

www.HarborChase.com



The Snowbell

Memory Care



MC 546 Sq. Ft.

\$


HarborChase
Assisted Living • Memory Care
Prince William Commons

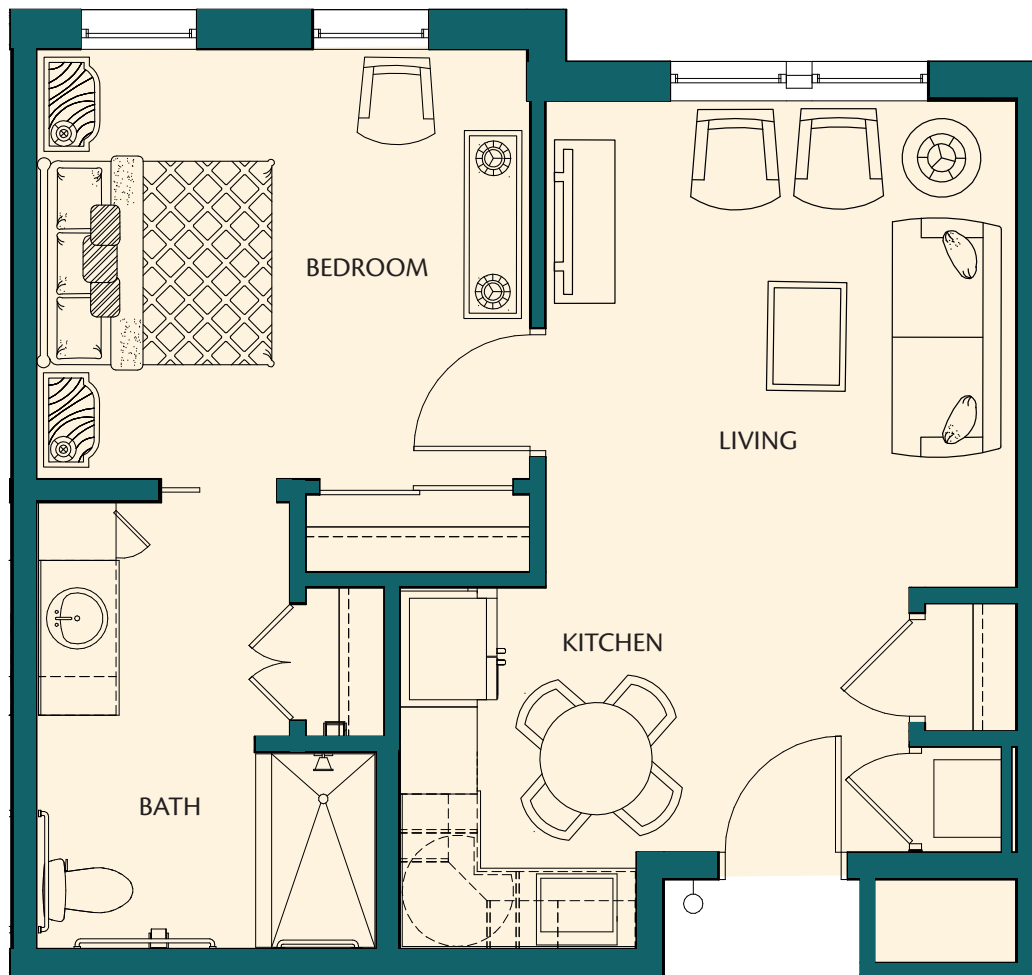
3310 Noble Pond Way, Suite 223 | Woodbridge, VA 22193 | (703) 721-8801

www.HarborChase.com



The Bluebell

Assisted Living



AL 547 Sq. Ft.

\$


HarborChase
Assisted Living • Memory Care
Prince William Commons

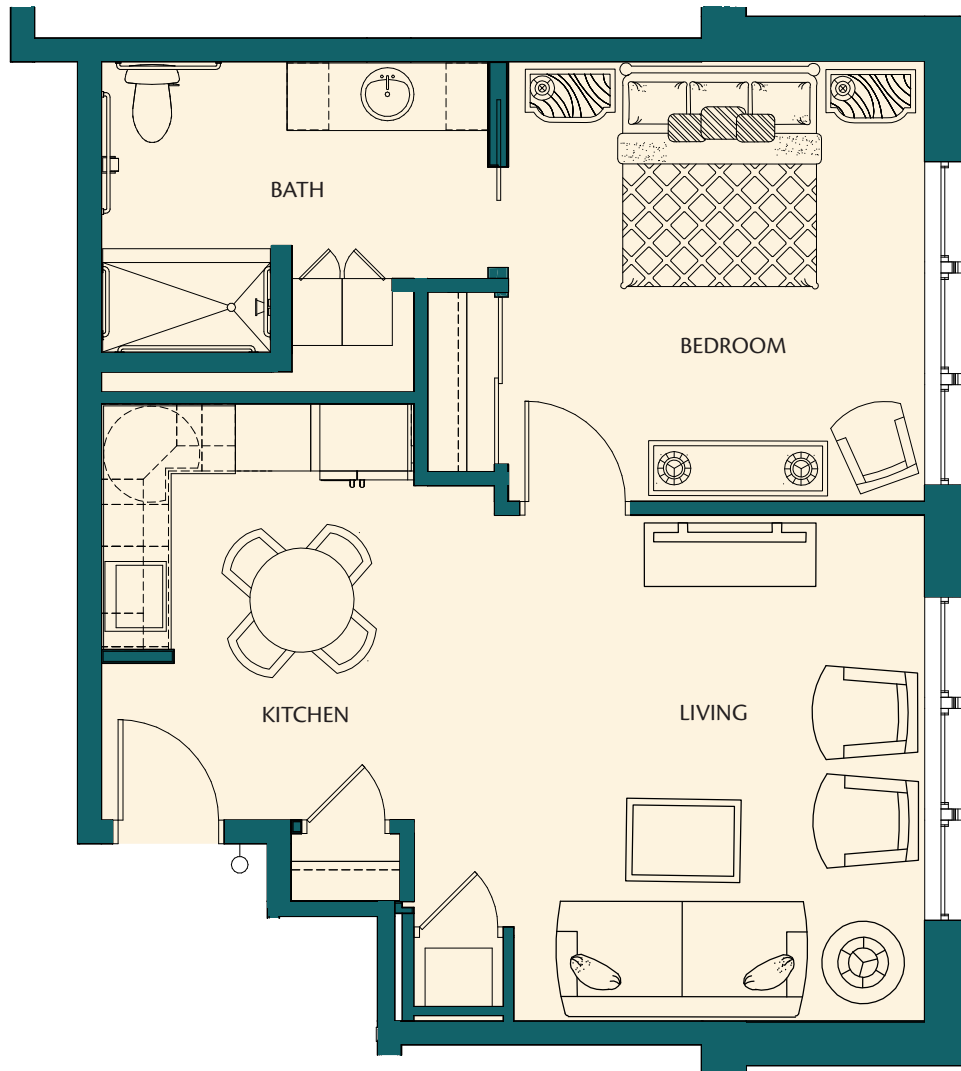
3310 Noble Pond Way, Suite 223 | Woodbridge, VA 22193 | (703) 721-8801

www.HarborChase.com



The FoxGlove

Assisted Living



AL 658-659 Sq. Ft.

\$



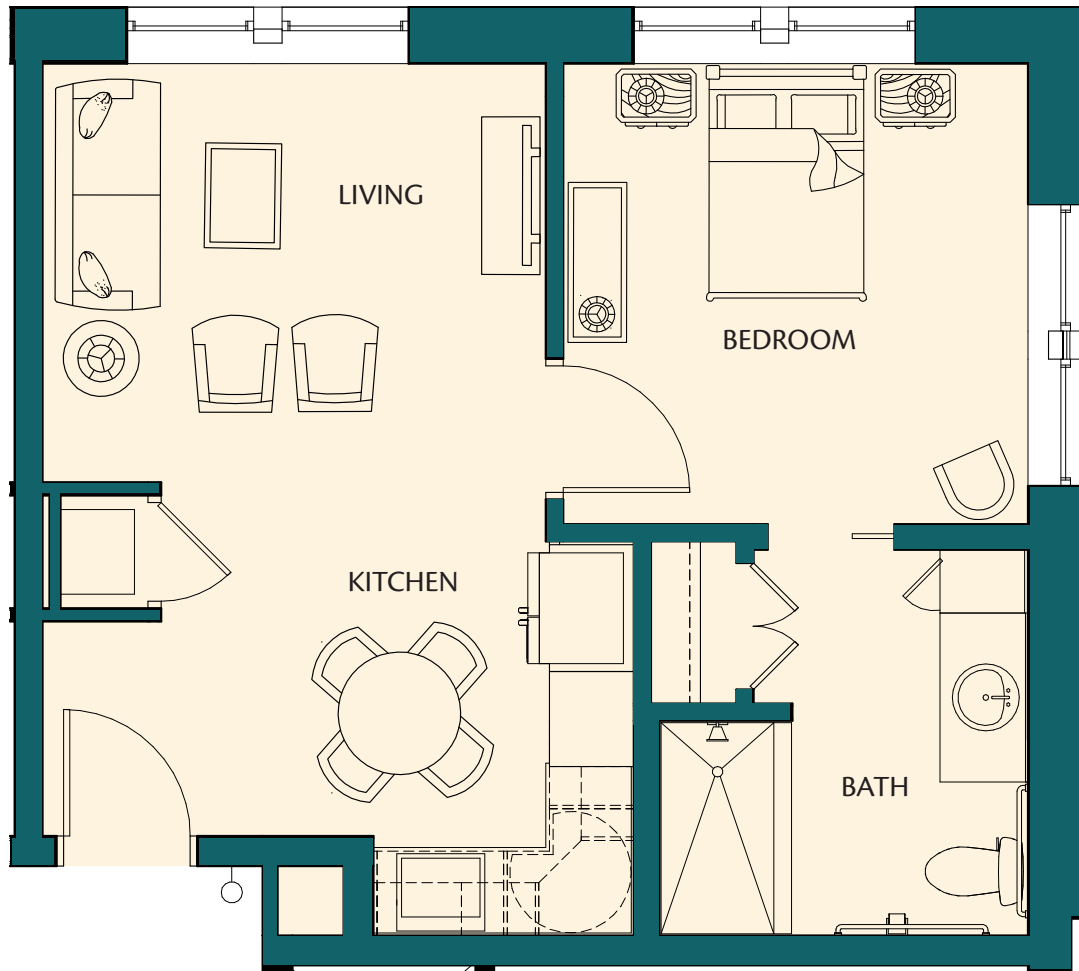
3310 Noble Pond Way, Suite 223 | Woodbridge, VA 22193 | (703) 721-8801

www.HarborChase.com



The Aster

Assisted Living



AL 463-517 Sq. Ft.

\$



3310 Noble Pond Way, Suite 223 | Woodbridge, VA 22193 | (703) 721-8801

www.HarborChase.com

