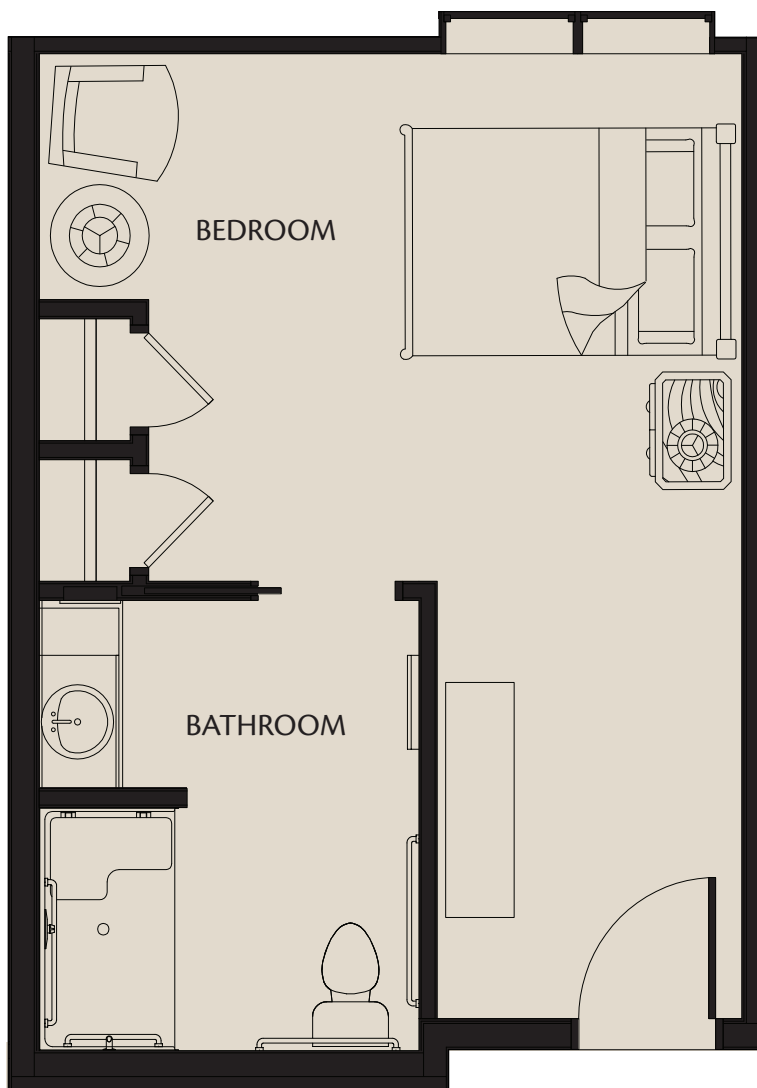




The Clementine

Memory Support



292-388 sq. ft. (Unit A1 & A2)

\$


HarborChase
Independent & Assisted Living
Memory Care

Dr. Phillips



The Tropicana

Memory Support



360-407 sq. ft. (Unit B)

\$



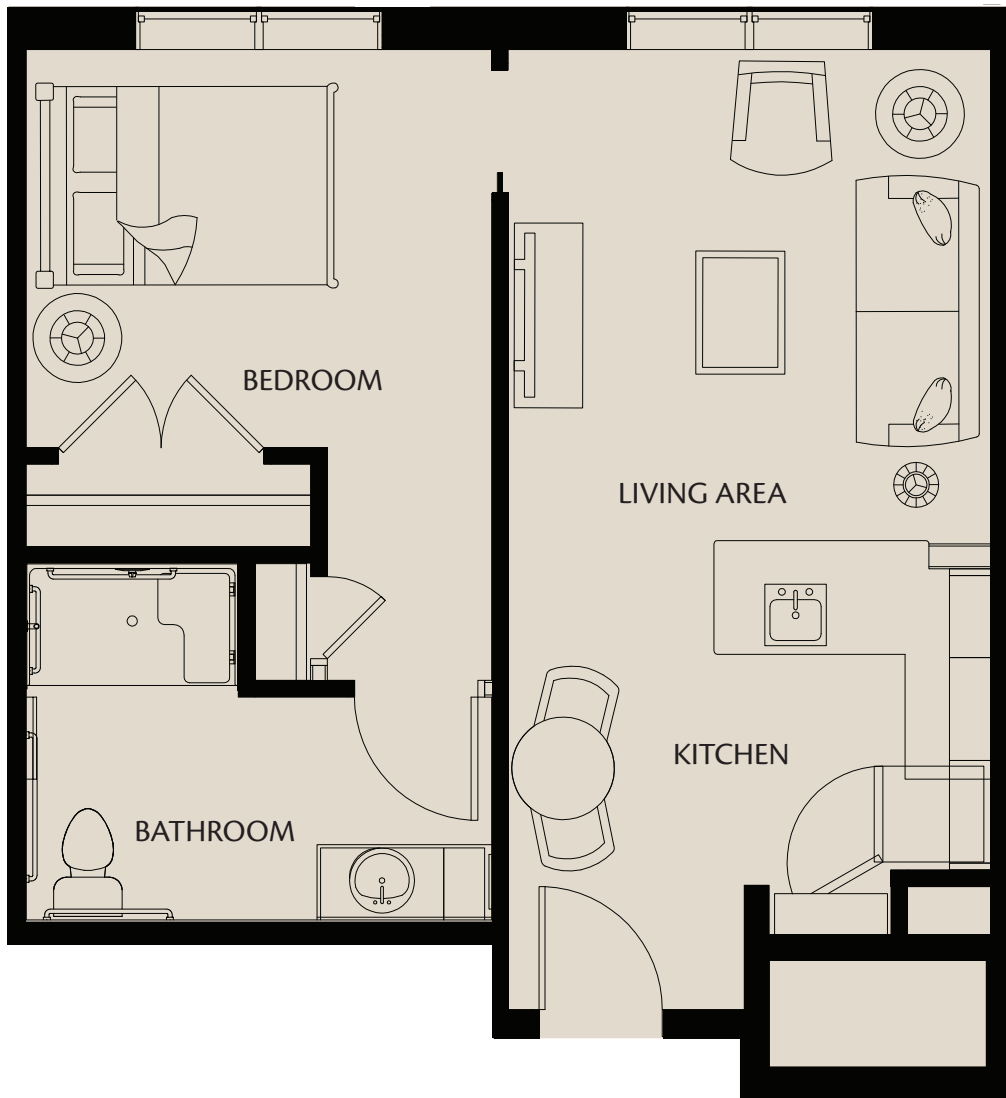
HarborChase
Independent & Assisted Living
Memory Care

Dr. Phillips



The Marcella

Assisted Living



490-629 sq. ft. (Unit A1, A1-HC, A2, A2-HC)

\$

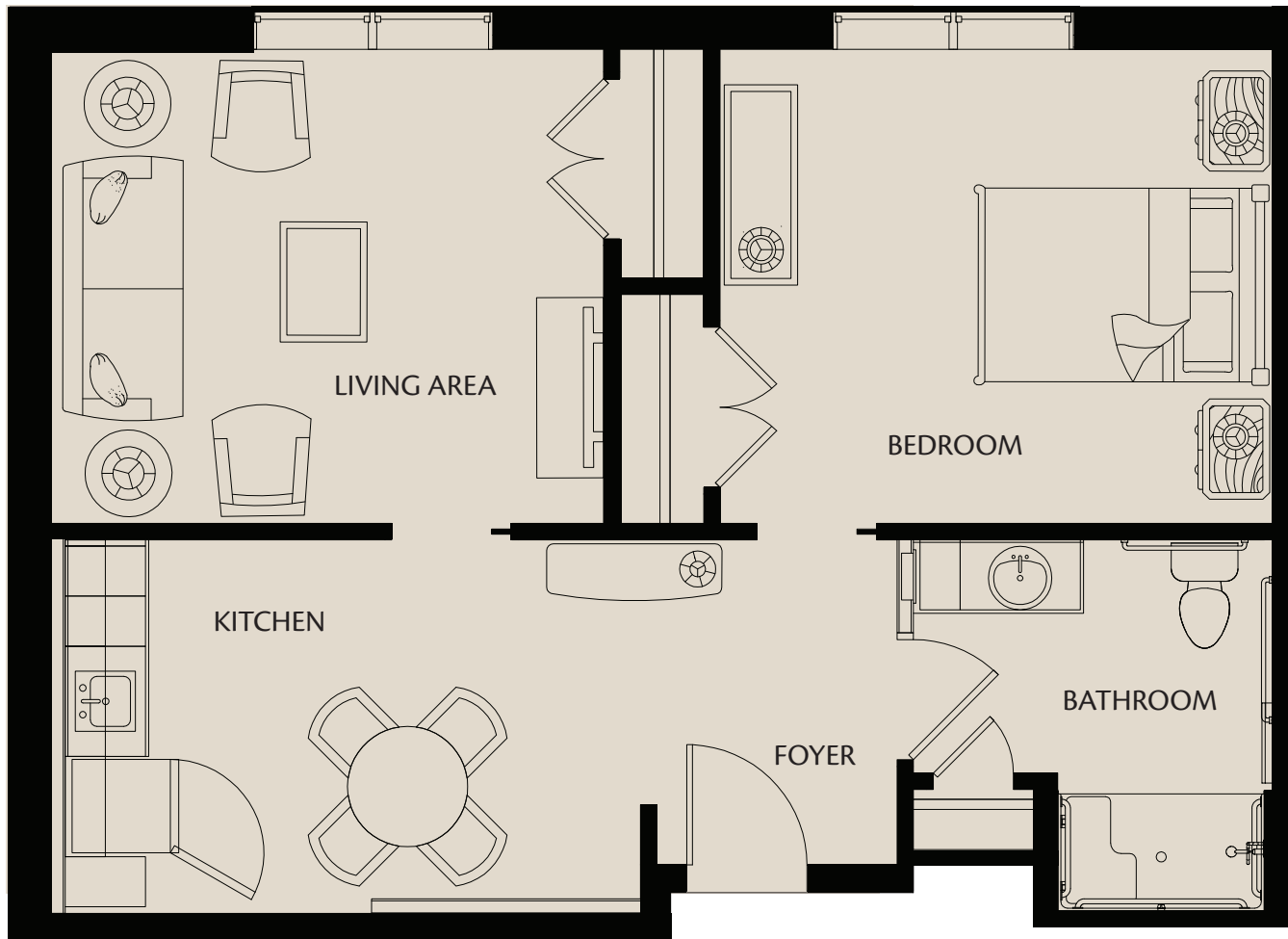


Dr. Phillips



The Granada

Assisted Living



647-720 sq. ft. (Unit B1, B1-HC)

\$

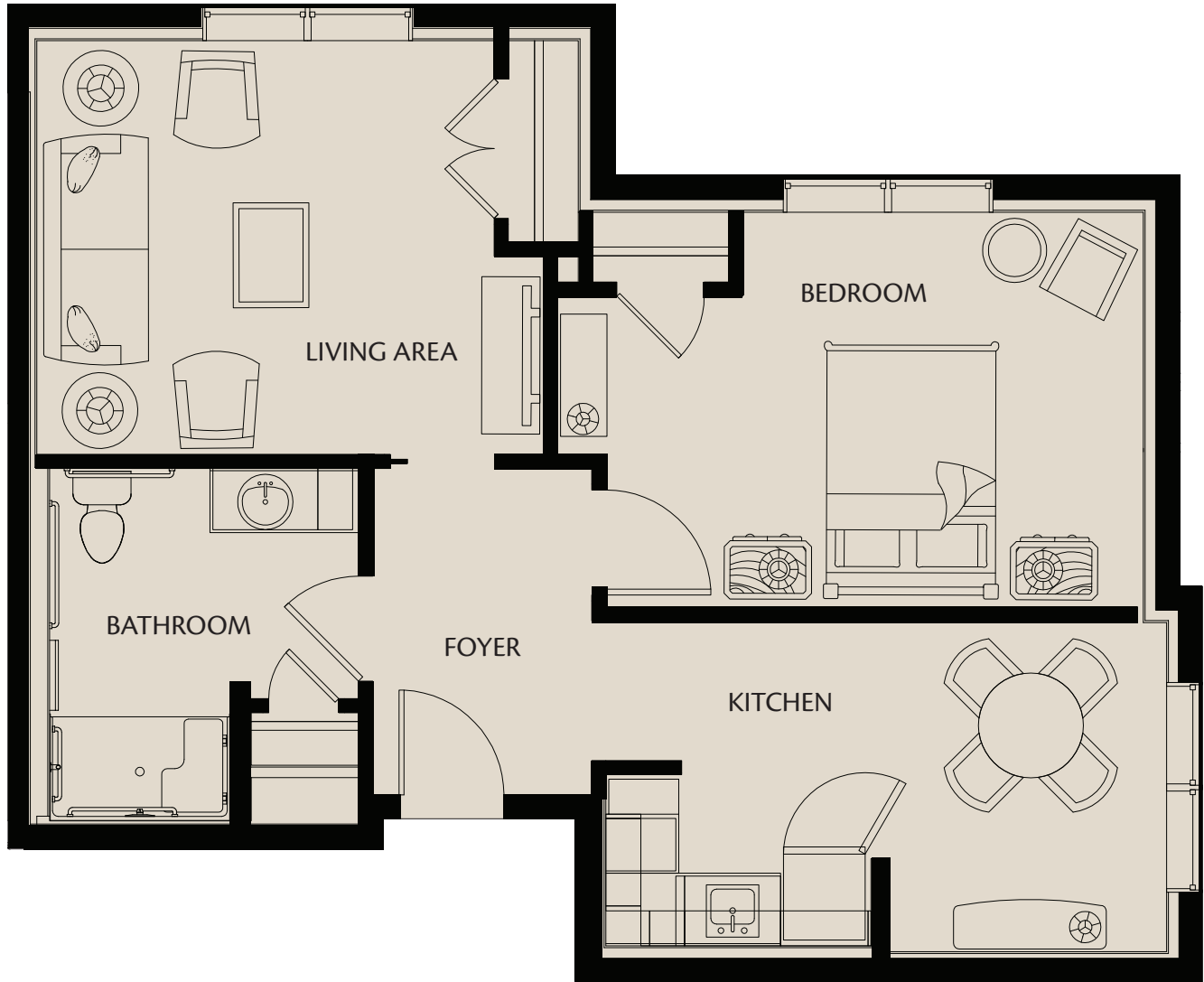


Dr. Phillips



The Fenwick

Assisted Living



680-780 sq. ft. (Unit B2, B2-HC)

\$

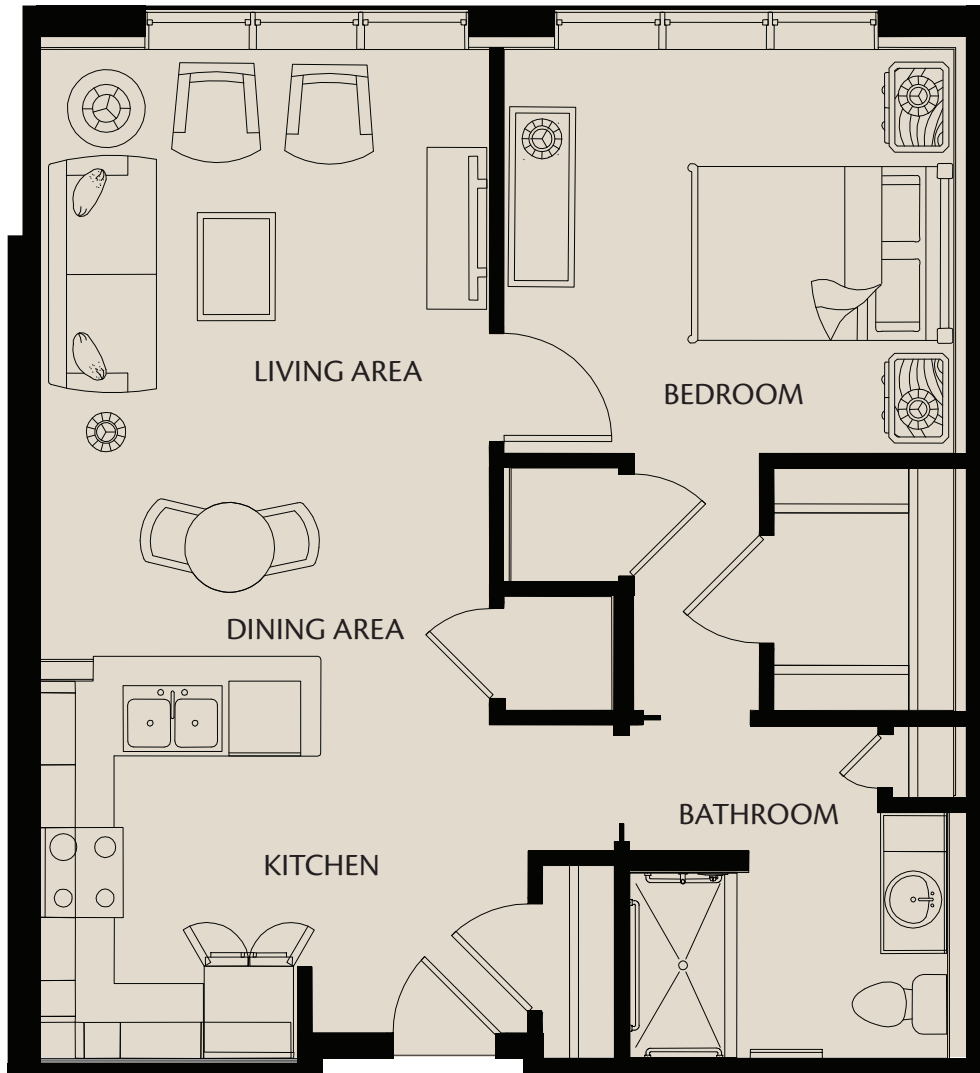


Dr. Phillips



The Bellemade

Independent Living



708-917 sq. ft. (Unit A1, A1-HC, A2)

\$

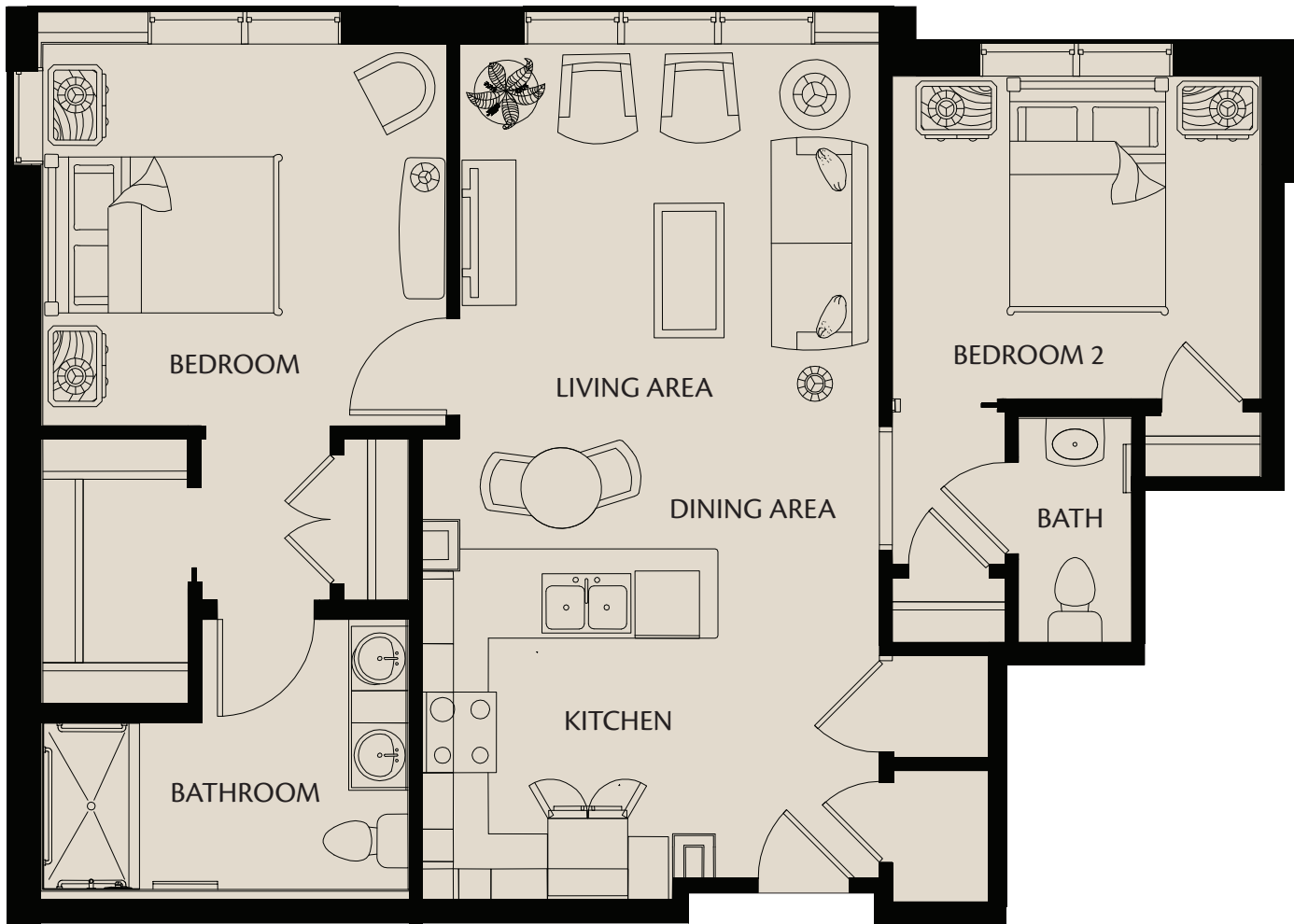

HarborChase
Independent & Assisted Living
Memory Care

Dr. Phillips



The Turnberry

Independent Living



870-982 sq. ft. (Unit B1, B1-HC)

\$

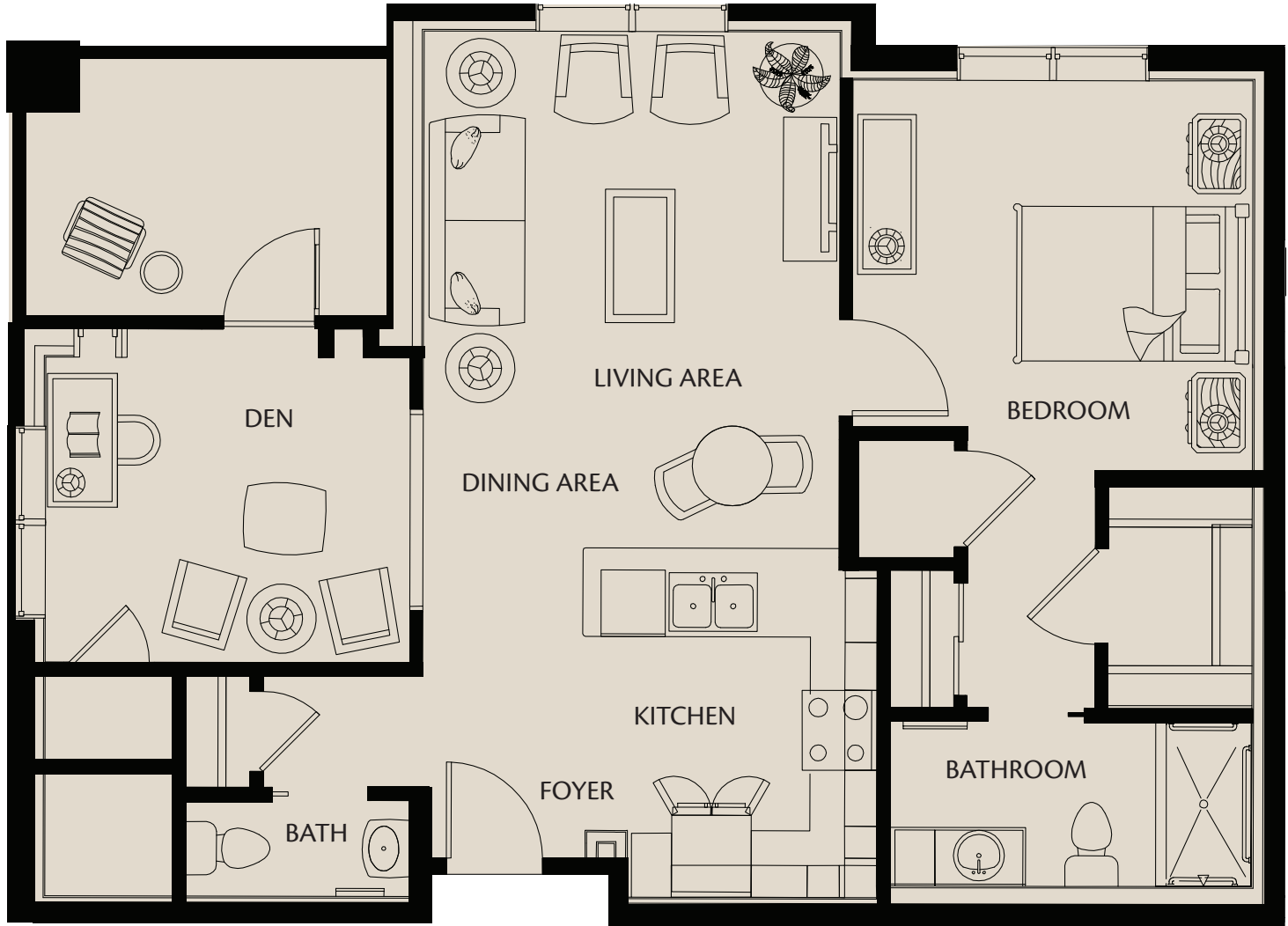

HarborChase
Independent & Assisted Living
Memory Care

Dr. Phillips



The Cheshire

Independent Living



868-984 sq. ft. (Unit B2)

\$

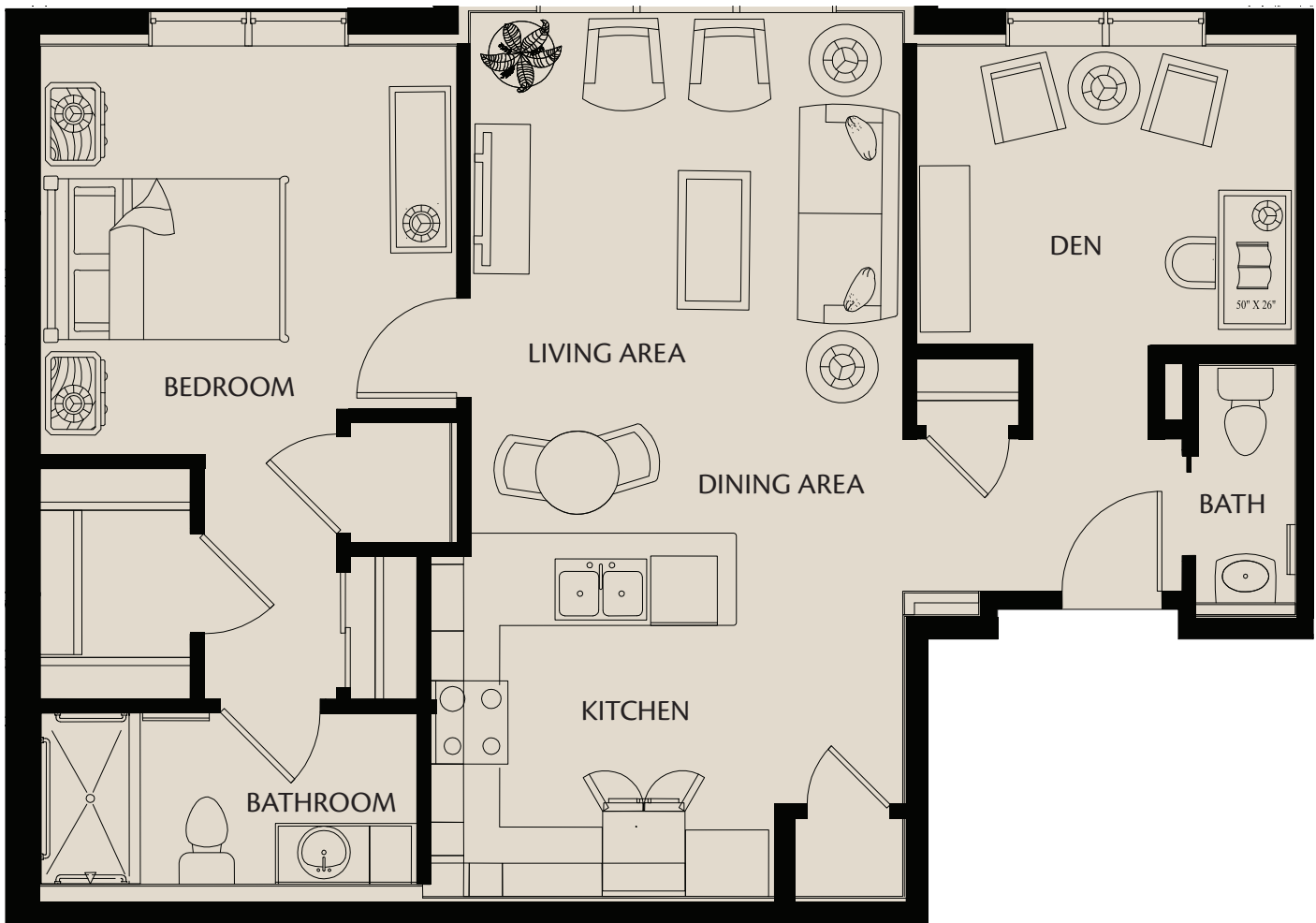

HarborChase
Independent & Assisted Living
Memory Care

Dr. Phillips



The Sandberry

Independent Living



868-978 sq. ft. (Unit B3)

\$

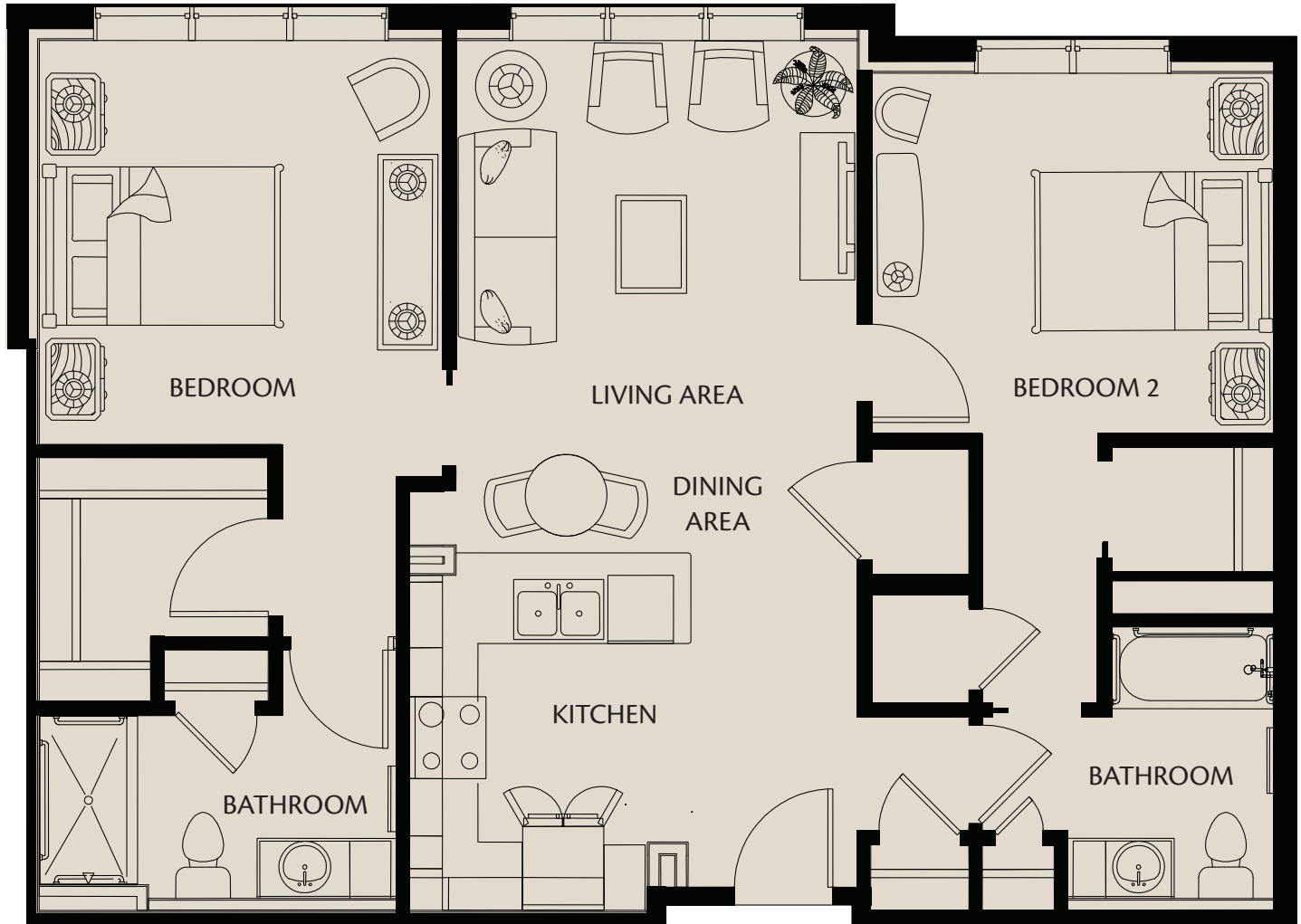

HarborChase
 Independent & Assisted Living
 Memory Care

Dr. Phillips



The Edgeworth

Independent Living



979-1141 sq. ft. (Unit C)

\$

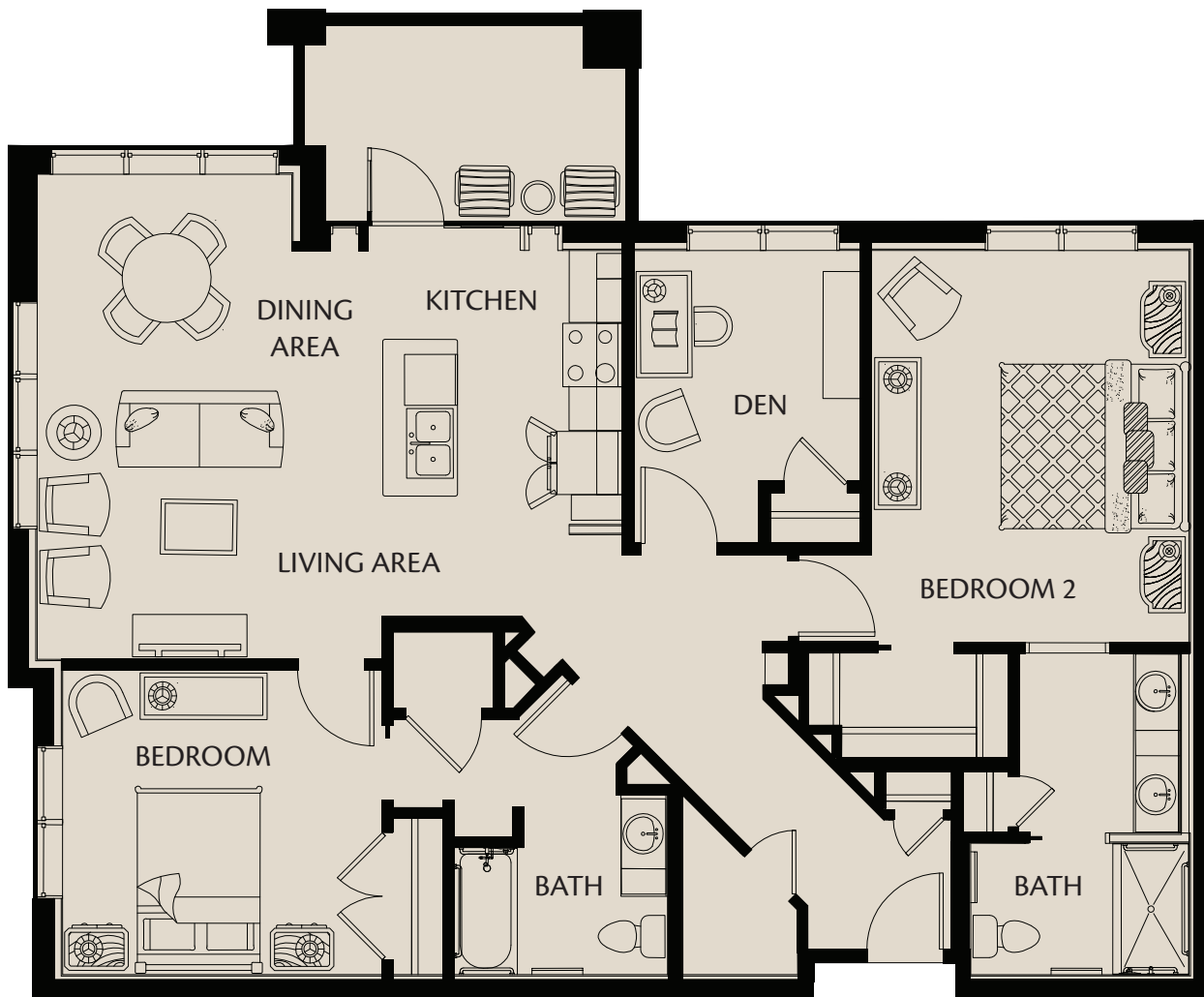

HarborChase
Independent & Assisted Living
Memory Care

Dr. Phillips



The Hinson

Independent Living



1,300-1,440 sq. ft. (Unit D1, D2)

\$


HarborChase
Independent & Assisted Living
Memory Care

Dr. Phillips