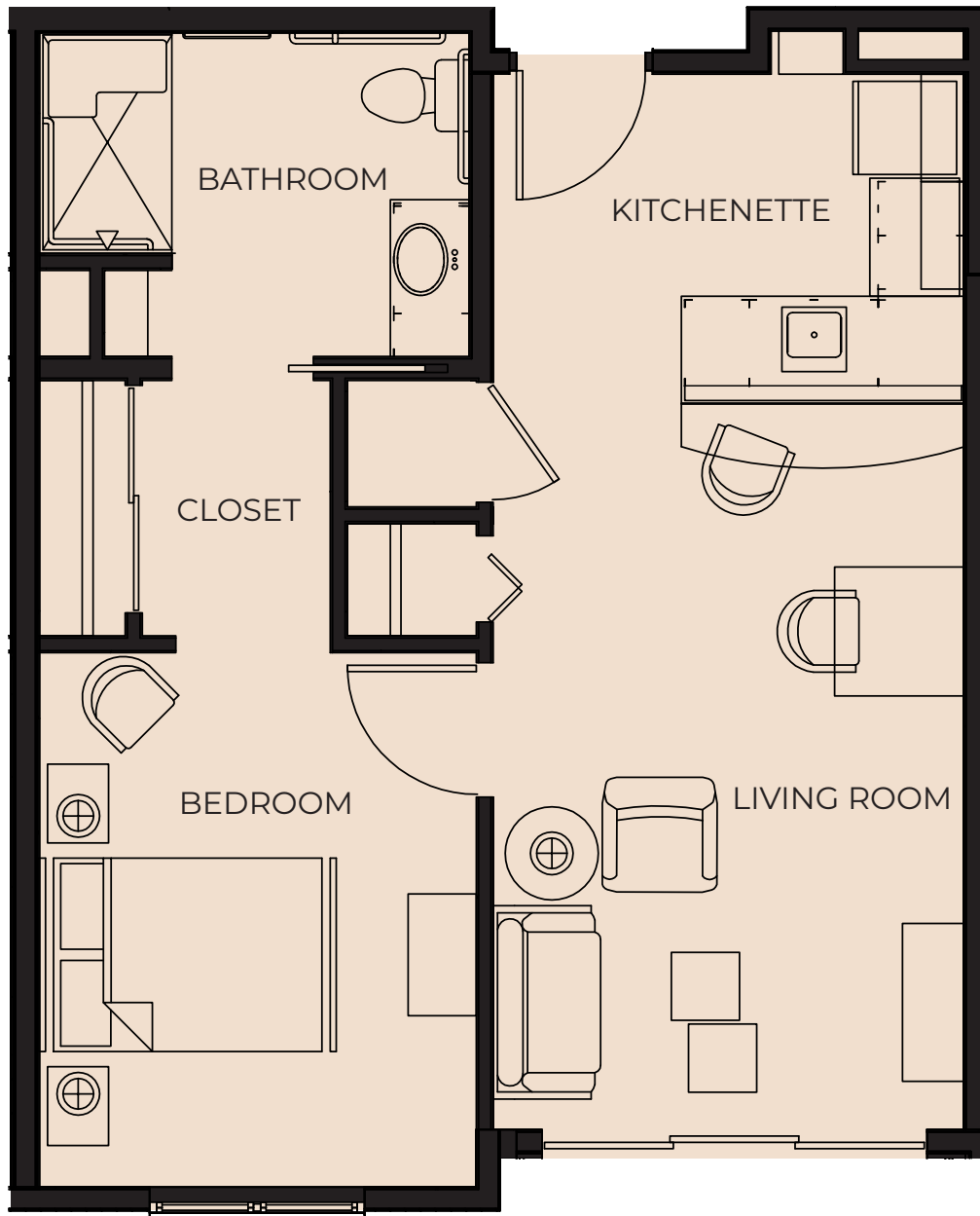


LAKE BLUFF

ASSISTED LIVING



\$



Shorewood



1111 E. Capitol Drive | Shorewood, WI 53211 | (414) 436-0311 | HarborChase.com

OAKLAND

ASSISTED LIVING



\$



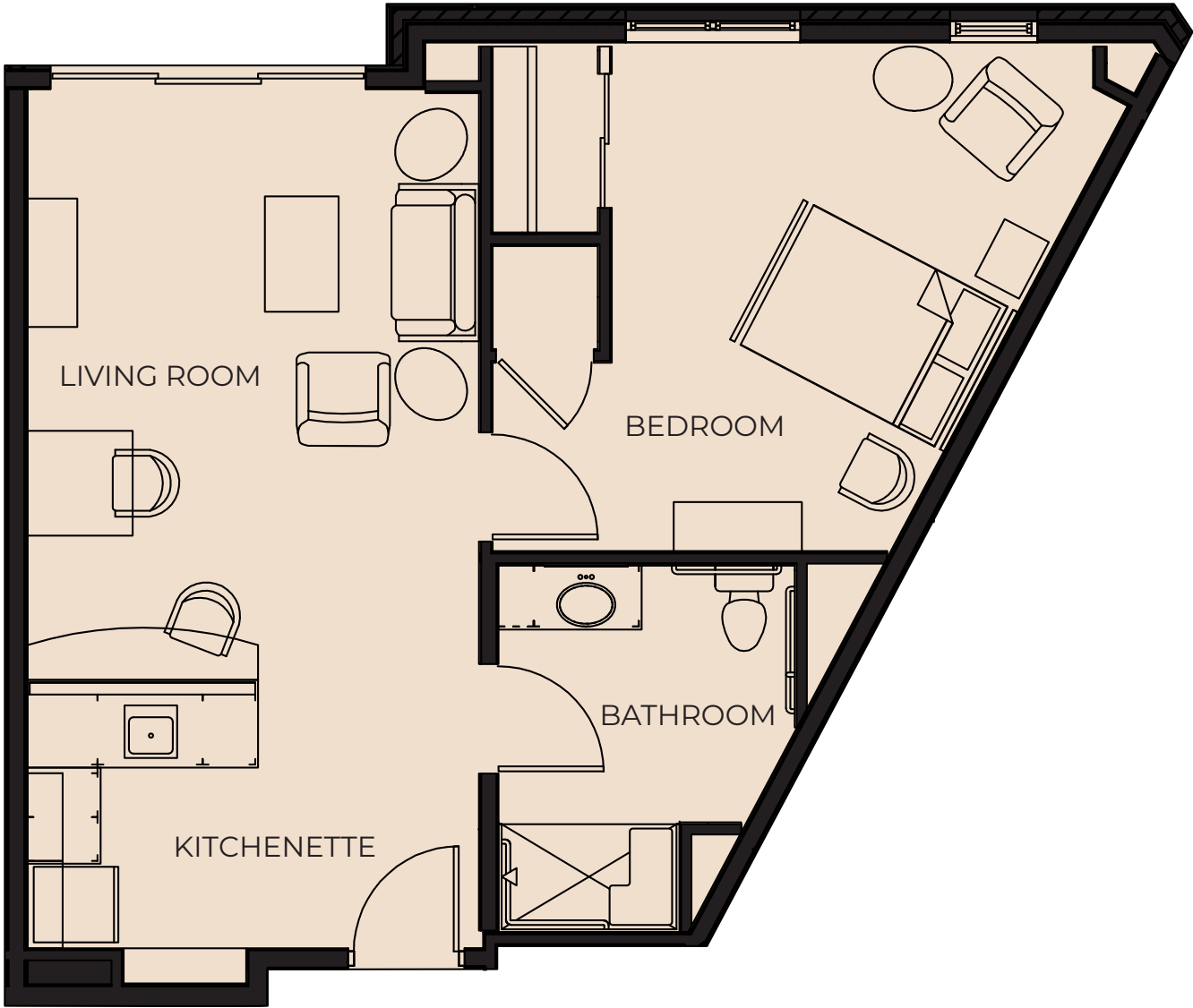
Shorewood



1111 E. Capitol Drive | Shorewood, WI 53211 | (414) 436-0311 | HarborChase.com

EDGEWOOD

ASSISTED LIVING



\$



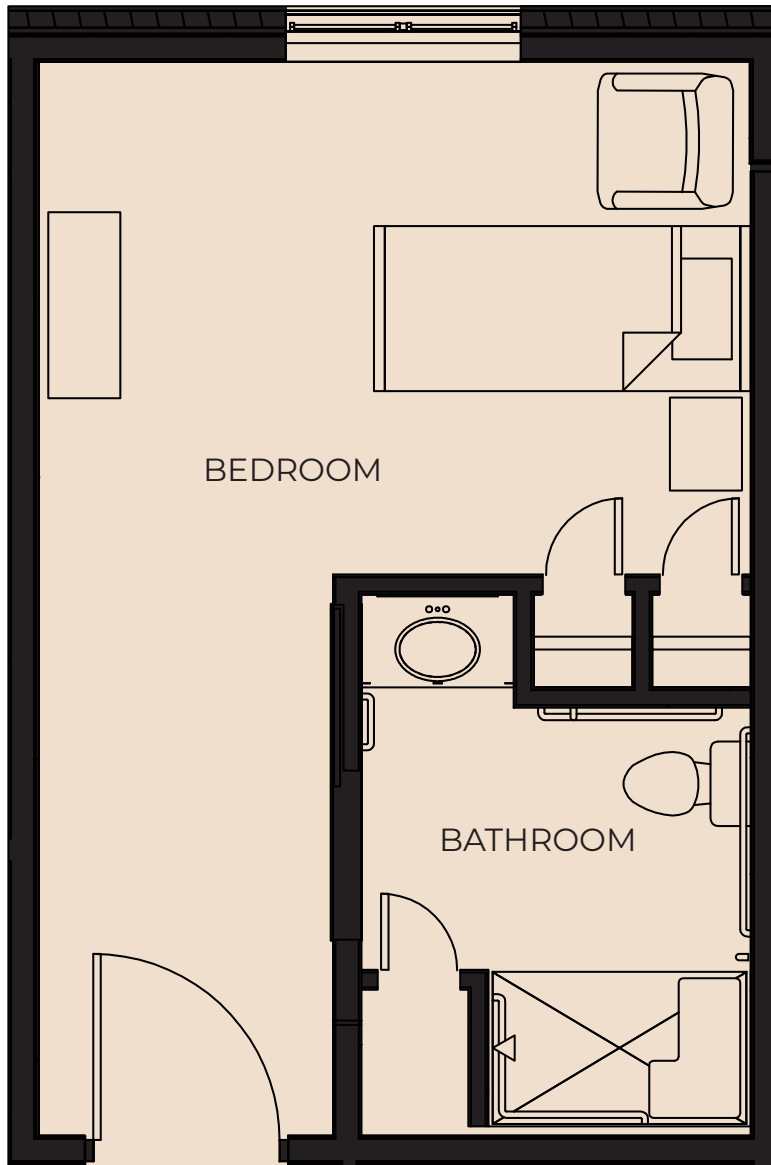
Shorewood



1111 E. Capitol Drive | Shorewood, WI 53211 | (414) 436-0311 | HarborChase.com

KENMORE

MEMORY CARE



\$



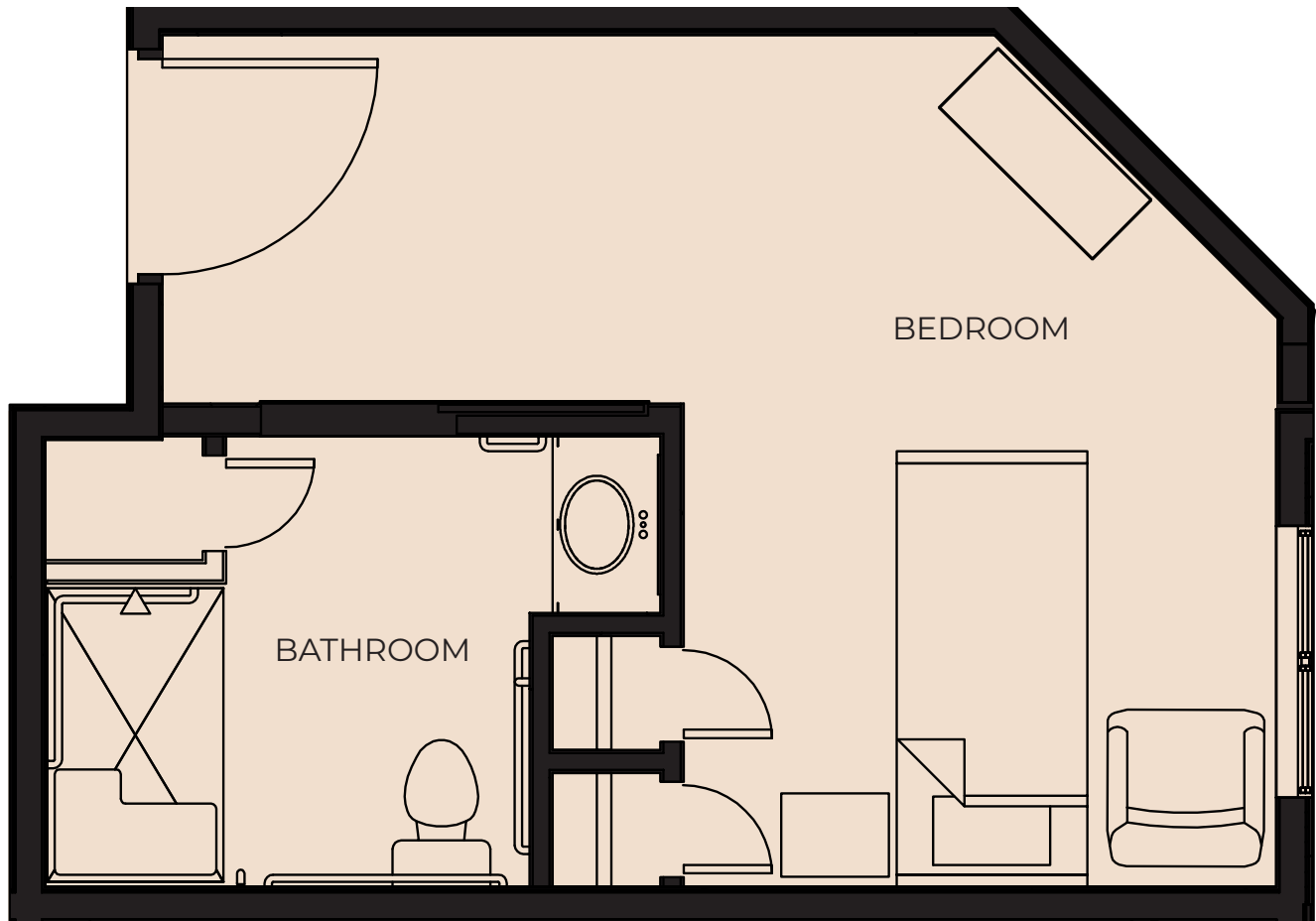
Shorewood



1111 E. Capitol Drive | Shorewood, WI 53211 | (414) 436-0311 | HarborChase.com

MARYLAND

MEMORY CARE



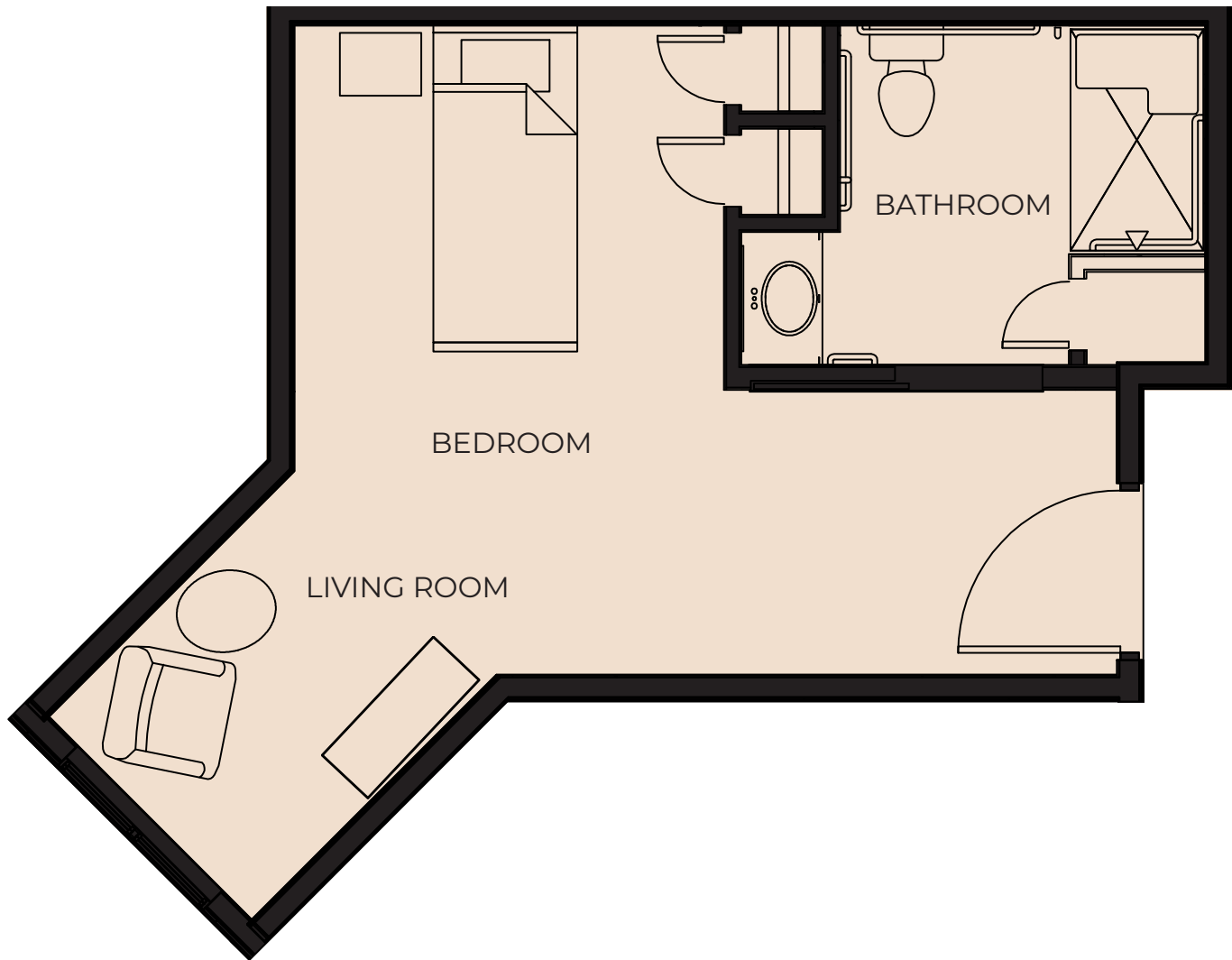
\$



1111 E. Capitol Drive | Shorewood, WI 53211 | (414) 436-0311 | HarborChase.com

ESTABROOK

MEMORY CARE



\$



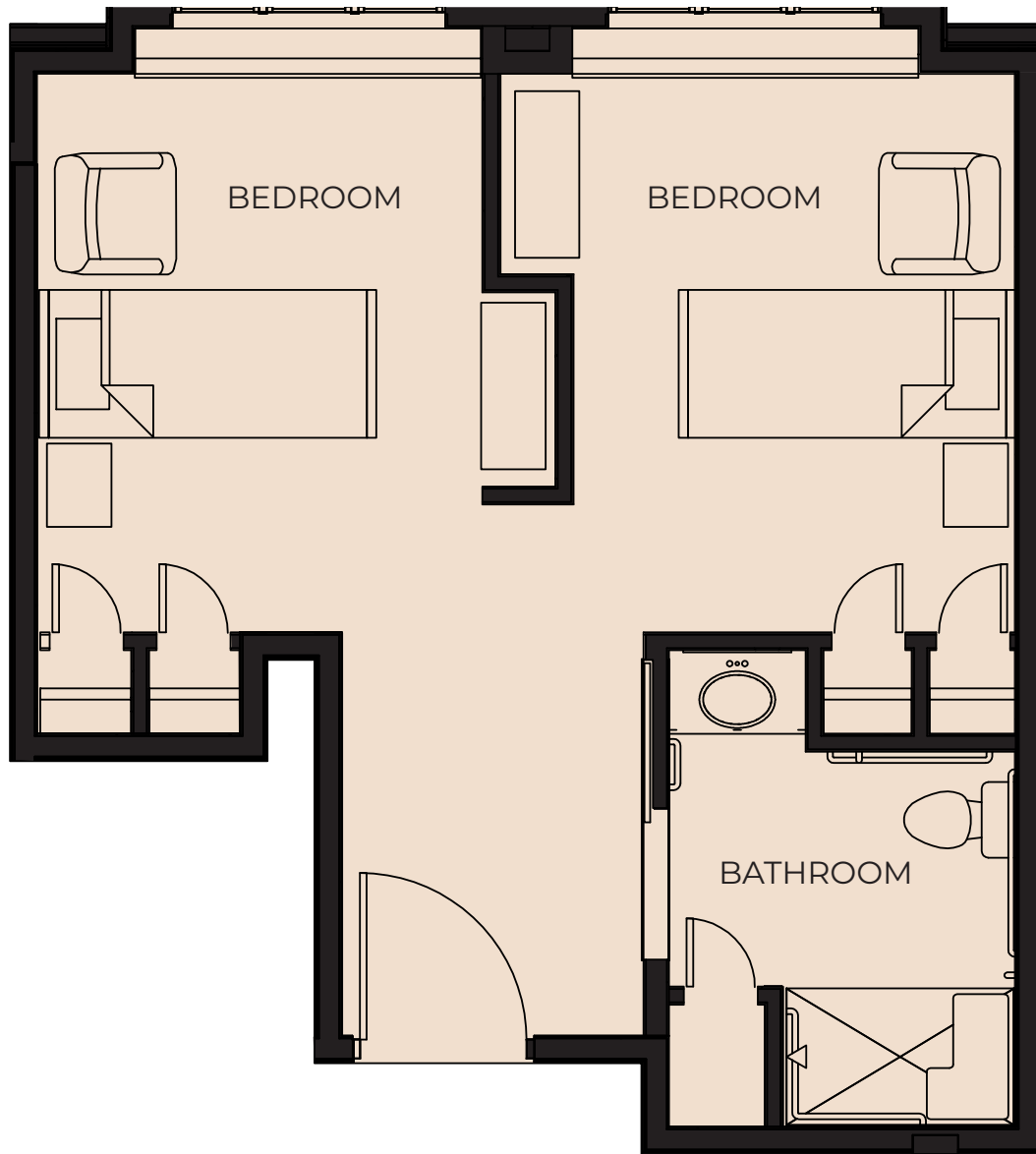
Shorewood



1111 E. Capitol Drive | Shorewood, WI 53211 | (414) 436-0311 | HarborChase.com

RICHLAND

MEMORY CARE



\$



Shorewood



1111 E. Capitol Drive | Shorewood, WI 53211 | (414) 436-0311 | HarborChase.com